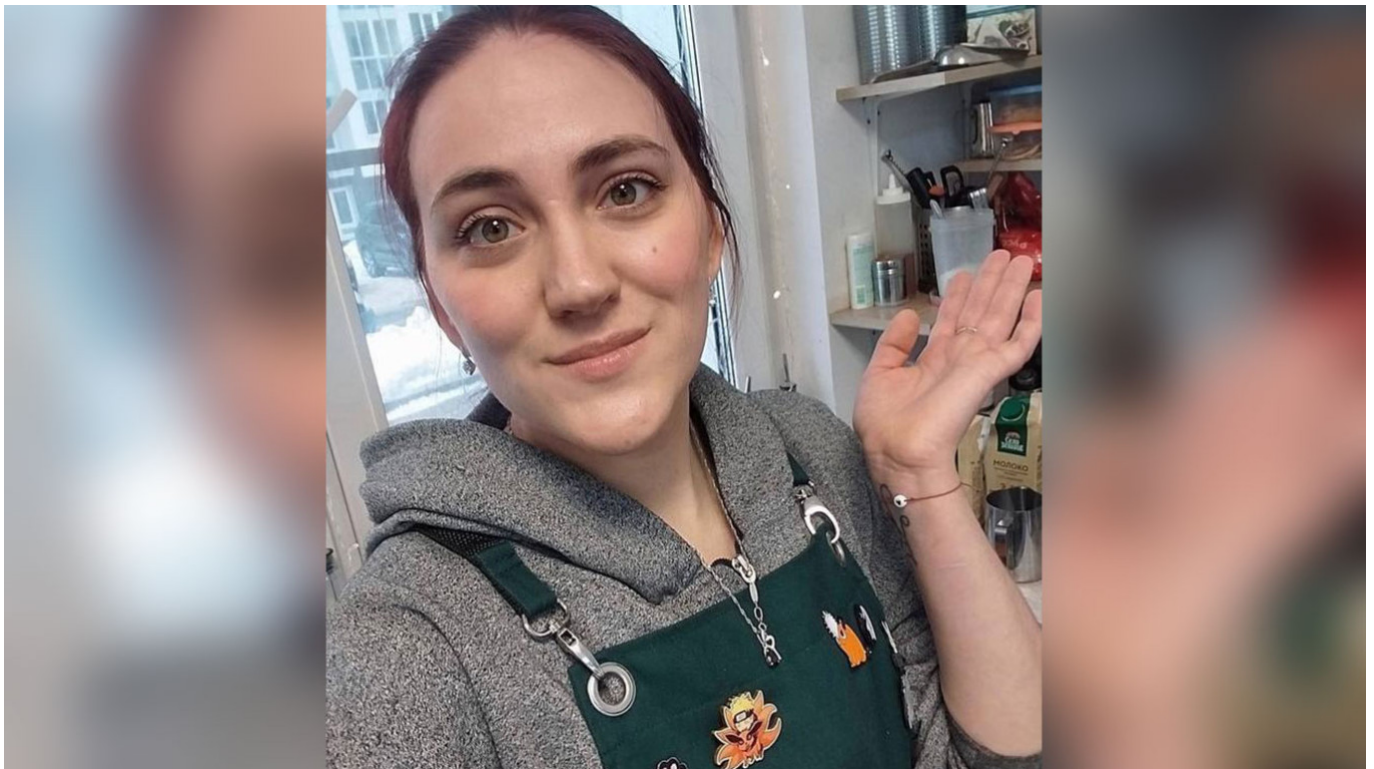


Russia Investigates Woman for 'Extremism' for Barring War Veteran From Cafe

February 28, 2024



Cafe owner Alyona Polyakevich in the town of Lyubertsy. **Social media**

Russian authorities are investigating a woman in the Moscow region town of Lyubertsy for kicking out a Ukraine war veteran from the cafe she owns.

Russia's Investigative Committee, which probes major crimes, [said](#) Wednesday that its chief Alexander Bastrykin had ordered for a criminal case to be opened into "incitement of hatred" after pro-war activists complained about the cafe owner online.

"The woman did not allow participants of the special military operation inside her establishment and posted extremist statements on social media," the Investigative Committee said in a statement.

According to the independent news website Mediazona, the woman, identified as Alyona Polyakevich, has not yet been named a [suspect](#) in the investigation.

Related article: [‘Our Country Is Sinking Into Darkness’: Oleg Orlov’s Final Word in Court](#)

“Incitement of hatred” is punishable by up to five years in prison, and those found guilty are added to Russia’s list of “terrorists and extremists,” which authorizes officials to block the designees’ bank accounts without a court order.

Polyakevich was [fined](#) 45,000 rubles (\$490) on Monday for discrediting” the Russian military over the same incident.

Last week, she wrote on X (formerly Twitter) that she had politely asked a Russian soldier to leave her cafe after he had been loitering and causing disruptions for about an hour.

“There's no f***** reason to behave like a schmuck, to scare customers and the barista,” Polyakevich wrote in another post.

Influential pro-war activists then shared links to Polyakevich’s posts and launched a harassment campaign against her, which ultimately led to the criminal case being opened on Wednesday.

Original url:

<https://www.themoscowtimes.com/2024/02/28/russia-investigates-woman-for-extremism-for-barring-war-veteran-from-cafe-a84272>