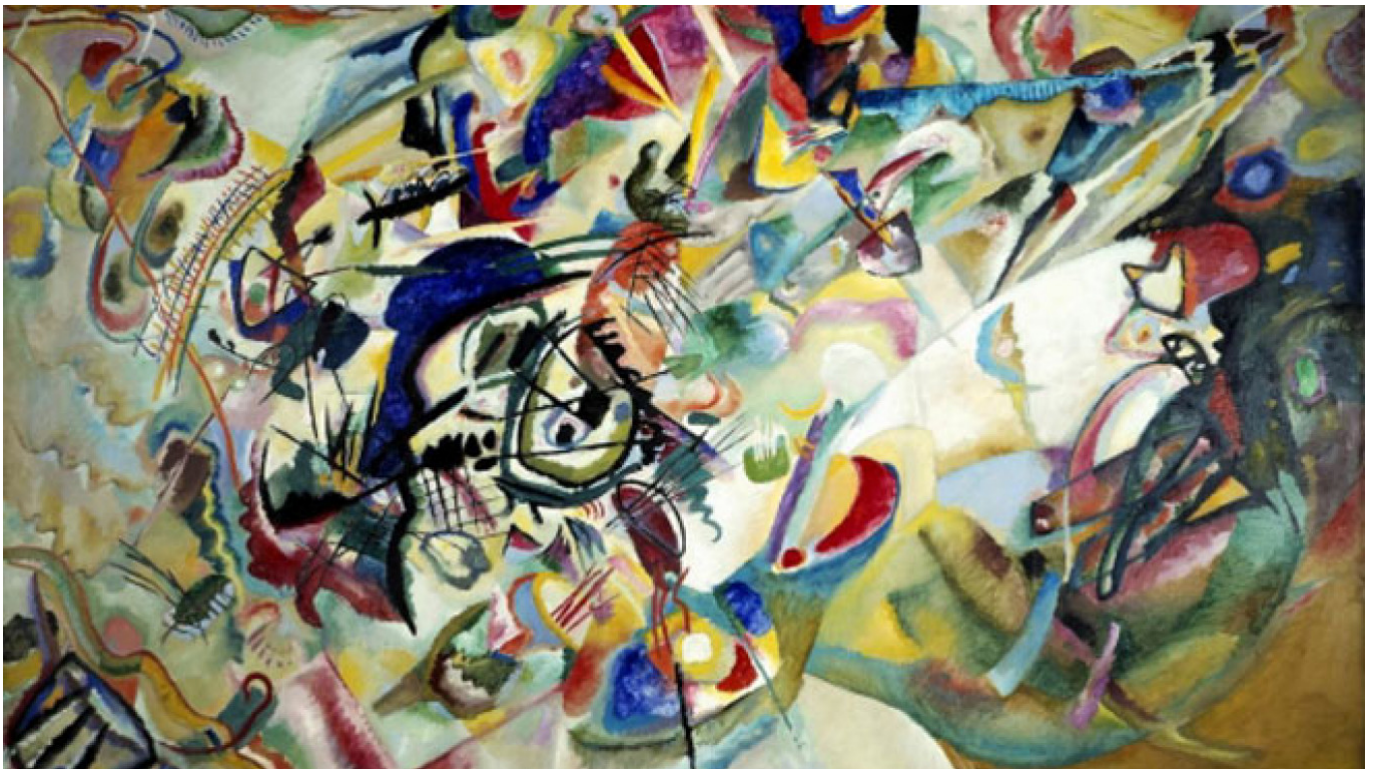


Exhibits

By [The Moscow Times](#)

April 13, 2016



Wassily Kandinsky. Counterpoint: Composition VI — Composition VII: on display are two 1913 works from the Hermitage Museum and the Tretyakov Gallery collections. New Tretyakov Gallery.

Academy of Arts:

NEW Yulia Merzlikina: art glass objects from various years, April 20 to May 8. Located at 21 Prechistenka. M. Kropotkinskaya. Noon to 8 p.m., Sun. noon to 7 p.m., closed Mon.
495-637-4771, www.rah.ru

Alexander Pushkin Museum:

Children's Portraits from the late 18th to the early 20th century from the museum collection, to June 6.

MT PICK Nikolai Kuzmin: book graphics, to May 15. Located at 12/2 Ulitsa Prechistenka. M. Kropotkinskaya. Ticket office open 10 a.m. to 5:30 p.m., Thurs. noon to 8:30 p.m., closed Mon. and the last Fri. of the month. 495-637-5674, www.pushkinmuseum.ru

ArtPlay Design Center:

Bosch. Visions Come Alive: multimedia show dedicated to early Netherlandish painter Hieronymus Bosch (1450–1516), to May 31. Located at 10 Nizhnyaya Syromyatnicheskaya Ulitsa, Bldg. 7. M Kurskaya. Noon to 8 p.m. 8–926–619–2889, 495–620–0882, www.artplay.ru

ArtStory Gallery:

NEW MT PICK Sergei Bazilev: retrospective of paintings by this acclaimed hyperrealist artist, to May 29. Located at 14 Staropimenovsky Pereulok. M. Tverskaya, Mayakovskaya. Noon to 8 p.m., closed Mon. 495–650–1343, www.art-story.com

Brothers Lumiere Center of Photography:

NEW Antanas Sutkus shows the Childhood series of photographs, to May 27.

NEW The Kiss (Potselui): international exhibit of works by classic photographers, to June 26. Located at 3 Bolotnaya Naberezhnaya, Bldg. 1. M. Kropotkinskaya. Noon to 9 p.m., Sat. and Sun. 11 a.m. to 9 p.m., closed Mon. 495–228–9878, www.lumiere.ru

CCC Garage:

Action Research / The Stagecraft of Power: two new series by multidisciplinary artist Taryn Simon, to May 22.

MT PICK Viktor Pivovarov: retrospective of works by this acclaimed conceptualist artist, to June 18. Located at 9 Krymsky Val, in Gorky Park, near Pionersky Prudi. M. Oktyabrskaya. Noon to 8:30 p.m. 495–645–0520, garageccc.com

Fashion Museum at Gostiny Dvor:

Ganich + Malevich: works by Vika Ganich, to April 24. Located at 4 Ul. Ilyinka, entrance 1, 2nd floor. M. Kitai–Gorod, Ploshchad Revolyutsii. Mon. and Tues. 11 a.m. to 7 p.m., Thurs. to Sat. noon to 9 p.m., Sun. 11 a.m. to 6 p.m. 499–270–4261.

Fine Art:

Filipp Rifenshtal shows four new series of conceptual photo works, to April 16. Located at 3 Bolshaya Sadovaya Ulitsa, Bldg. 10, in the yard of the Pekin restaurant. M. Mayakovskaya. 11 a.m. to 6 p.m., Sat. noon to 6 p.m., closed Sun. 499–251–7649, www.galleryfineart.ru

Gallery 21 at Winzavod Center of Contemporary Art:

Until the Word Is Gone (Poka ne Ischeznet Slovo): Sergei Katran's multimedia project, to April 15. Located at 1 4th Syromyatnichesky Pereulok, Bldg. 6. M. Chkalovskaya, Kurskaya. 11 a.m. to 7 p.m., closed Sun. and Mon. Free admission. 8–910–463–0404, www.gallery-21.ru/en

Historical Museum:

Armenia: the history of Armenia in items from major Armenian museums, to June 13. Located at 1/2 Red Square. M. Ploshchad Revolyutsii. Ticket office open Mon., Wed. Thurs., Sun. 10 a.m.

to 5:30 p.m., Fri. and Sat.. 10 a.m. to 8 p.m., closed Tues. 495-692-4019, www.shm.ru

In Artibus:

NEW MT PICK Late Works by Ilya Mashkov (1881–1944) from Russian museum and private collections, to July 3. Located at 17 Prechistenskaya Naberezhnaya, entrance from Kursovoi Pereulok. M. Kropotkinskaya. 11 a.m. to 8 p.m., Sat and Sun. 11 a.m. to 7 p.m., closed Mon. 495-640-0249, www.inartibus.org

Institute of Russian Realist Art:

Russia on the Road. 1920–90: Just from Rome's Palazzo delle Esposizioni this exhibition of paintings and graphics explores almost a century of transport in Russian art, to May 22. Located at 7 Derbenyovskaya Naberezhnaya, Bldg. 31. M. Paveletskaya, Proletarskaya, tram 3 to Novospassky Dvor, entrance from Derbenyovskaya Ulitsa. Tues. to Sun. 11 a.m. to 8 p.m., closed Mon., ticket office open 11 a.m. to 7 p.m. 495-276-1212, rusrealart.ru

International Roerich Center:

Altai Decorative Art and Collection of Minerals, exhibit and sale, to May 15. Located at 3/5 Maly Znamensky Pereulok. M. Kropotkinskaya. Ticket office open 11 a.m. to 6:30 p.m., closed Mon. 499-271-3417/20, www.icr.su

Jewish Museum & Tolerance Center:

FESTIVAL Photobiennale: New York's Photo League. 1936–51, to May 22.

NEW Poste Restante. Collections of Russian Avant-Garde from Russian regional museums, to June 10. Located at 11 Ulitsa Obraztsova, Bldg. 1A. M. Savyolovskaya, then two stops by bus 12 to Ulitsa Obraztsova. Sun. to Thurs. noon to 10 p.m., Fri. 10 a.m. to 3 p.m. closed Sat. and Jewish holidays. 495-645-0550, www.jewish-museum.ru

Krokin Gallery:

MT PICK The Birth of Vertical (Rozhdeniye Vertikali): works by Francisco Infante-Arana from 1962 to 1965, to April 18. Located at 9 Klimentovsky Pereulok. M. Tretyakovskaya, Novokuznetskaya. By appointment. 8-964-564-0303, www.krokingallery.com

Lumiere Hall at Krasny Oktyabr:

MT PICK Mysterious Dwellers of the Universe (Tainstvenniye Obitateli Vselennoi): This multimedia show includes 27 sci-fi-esque sculptures that their creator Japanese steampunk artist Shovel Head calls "Mechanical Mutants," to June 30. Tickets at www.obitatelivselennoy.ru Located at 2 Bersenevsky Pereulok. M. Kropotkinskaya. 11 a.m. to 11 p.m. 495-215-5120, www.lumierehall.ru

Maria Yermolova Museum:

NEW Yermolova's Circle of Artists: works by Issak Levitan, Mikhail Nesterov, Grigory Myasoyedov, Konstantin Korovin, Valentin Serov, Leonid Pasternak, Mikhail Vrubel

and others. April 15 to May 10. Located at 11 Tverskoi Bulvar. M. Tverskaya. Noon to 7 p.m., Thurs. 1 to 9 p.m. closed Tues. and the last Fri. the month. 495-690-5416/4901, bakhrushin.theatre.ru/branches/dme

Moscow Kremlin Belfry:

NEW Jewels Inspired by Nature. Ilgiz F. (Dragotsennosti Vdokhnovlyonniye Prirodoi): works by jeweler Ilgiz Fazulzyanov, to July 31. Located at the Moscow Kremlin. Borovitsky Gate entrance. M. Borovitskaya. 10 a.m. to 5 p.m., closed Thurs. 495-695-4146, www.kreml.ru

Moscow Museum of Modern Art on Gogolevsky:

NEW Alina Ozerova shows installations, videos and graphics, to May 15.

MT PICK Borscht and Champagne: selected works from the collection of Vladimir Ovcharenko, to June 5.

NEW Yury Filippov (1927-2012): landscapes in oils, April 20 to May 22. Located at 10 Gogolevsky Bulvar. Metro Kropotkinskaya. Noon to 8 p.m., ticket office to 7:15 p.m., Thurs. 1 to 9 p.m., ticket office to 8:15 p.m., closed every third Monday of the month. 495-231-3660, www.mmoma.ru

Moscow Museum of Modern Art on Petrovka:

Art Up, Art In: dialogue of museum art and commercial design, to May 9. Located at 25 Ulitsa Petrovka. M. Chekhovskaya. Noon to 8 p.m., ticket office to 7:15 p.m., Thurs. 1 to 9 p.m., ticket office to 8:15 p.m., closed every third Monday of the month. 495-231-3660, www.mmoma.ru

Moscow Museum of Modern Art on Yermolayevsky:

FESTIVAL Photobiennale: new series of exhibits features works by Pascal Colrat, Yana Romanova, Zhenya Mironov, Alexander Veryovkin, Thierry Bouet and others, to April 17. Located at 17 Yermolayevsky Pereulok. M. Mayakovskaya. Noon to 8 p.m., ticket office to 7:15 p.m., Thurs. 1 to 9 p.m., ticket office to 8:15 p.m., closed every third Monday of the month. 495-231-3660, www.mmoma.ru

Multimedia Art Museum:

MT PICK Hiroshi Sugimoto shows the Past and Present in Three Parts series of photographs, to May 8.

FESTIVAL NEW Photobiennale: Alexander Veryovkin: Link to Orion, April 15 to May 9.

FESTIVAL Photobiennale: British Style: works from the 1970s to the 1980s by Karen Knorr, to May 9.

FESTIVAL NEW Photobiennale: Hain Gorny: New Objectivity and Industry. 1920s-1930s Products and Image Design in Germany, April 15 to June 19.

FESTIVAL Photobiennale: Places of St. Petersburg: works by Candida Hoffer, to May 9.

FESTIVAL NEW Photobiennale: Shunsuke Francois Nanjo: The Art of War: Virtual Mapping of Utopia. Forest of Oblivion, April 15 to May 9.

FESTIVAL NEW Photobiennale: Steve Fitch: Western Landmarks, April 15 to June 19. Located at 16 Ulitsa Ostozhenka. M. Kropotkinskaya. Ticket office open noon to 9 p.m., closed Mon. 495-637-1100, www.mamm-mdf.ru

Muravyov-Apostol Estate:

MT PICK Genesis: photographs by Sebastio Salgado, to May 15. Located at 23/9 Ul. Staraya Basmannaya. M. Krasniye Vorota, Baumanskaya, Kurskaya. Wed. and Sun. noon to 7 p.m., or by appointment. 499-267-9866, ma-housemuseum.ru

Museum of Decorative, Applied and Folk Art:

Lace Parade (Kruzhevo Napokaz): Russian and West European lace from the 18th to the present from major Russian museum and private collections, to Nov. 20. Located at 3 Delegatskaya Ulitsa. M. Tsvetnoi Bulvar. Ticket office open 11 a.m. to 5 p.m., closed Tues. and the last Mon. of the month. 495-609-0146, Thurs. 10 a.m. to 8 p.m., www.vmdpni.ru

Museum of Private Collections:

Ilya Zilbershtein's Collection of Russian and West European painting and graphics from the 16th to the 20th century, to Aug. 28. Located at 10 Ul. Volkhonka. M. Kropotkinskaya. 11 a.m. to 7 p.m., Thurs. 11 a.m. to 9 p.m., closed Mon. and Tues. 495-697-1610, www.arts-museum.ru, artprivatecollections.ru

Nashi Khudozhniki Gallery:

MT PICK Russian Modernism in Russia and Outside: Nashi Khudozhniki Gallery jubilee exhibit, to April 24. Located at 2 Sechenovsky Pereulok. M. Molodyozhnaya. 11 a.m. to 8 p.m., closed Mon. 495-637-2810/52, www.kournikovagallery.ru

New Tretyakov Gallery:

Contemporary Art: 1960-2000. Restart: new display of contemporary art from the gallery collection, April 15 through September in halls 39 to 42.

MT PICK Irina Zatulovskaya shows the Reverse Perspective series of 90 works as a tribute to her favorite artists, to April 17.

Sergei Gerasimov (1885-1964): watercolors, charcoal and sanguine drawings, to Aug. 21.

MT PICK Wassily Kandinsky. Counterpoint: Composition VI — Composition VII: on display are two 1913 works from the Hermitage Museum and the Tretyakov Gallery collections. The exhibition also includes the "Way to Abstraction" multimedia project, to June 13 in halls 14 and 15. Located at 10 Krymsky Val. M. Oktyabrskaya, Park Kultury. Ticket office open 10 a.m. to 6:30 p.m., closed Mon. 499-230-7788, 238-1378, 495-951-1362. Excursions 495-953-5223. An Autoline minibus runs from outside the New Tretyakov Gallery to the Tretyakov Gallery at 10/12 Lavrushinsky Pereulok daily at 12:20, 1:20, 2:20, 3:20 and 4:20 p.m.,

www.tretyakovgallery.ru

New Western Art Gallery:

Impressions of the World. Doctor Zhivago's Travels photographs from the archives of physician, scientist, traveller and collector Alexander Zhivago (1860–1940) and paintings by Claude Monet, Edouard Manet, Camille Pissarro, Vincent van Gogh, Henri Matisse, Edvard Munch and others, to April 24. Located at 14 Ulitsa Volkhonka. M. Kropotkinskaya. 11 a.m. to 8 p.m., Thurs. 11 a.m. to 9 p.m., closed Mon. 495-697-1546, www.arts-museum.ru, www.newpaintart.ru

Oriental Art Museum:

Colors of Paradise (Kraski Raya): Tadzhik paintings from the 1960s to the 2010s from Yulia Verbitskaya's collection, April 15 to May 9. Located at 12 Nikitsky Bulvar. M. Arbatskaya. Ticket office open 11 a.m. to 7:30 p.m., Thurs. noon to 8:30 p.m., closed Mon. 495-691-9614/0212, www.orientmuseum.ru

Oriental Art Museum at VDNKh:

Nikolai Roerich. The Realm of Light: this multimedia show includes images of Roerich's works from the Oriental Art Museum and the New York Nicholas Roerich Museum collections, excerpts from documentary and feature films, to May 24 in Pavilion 13.

The Magic of Africa: African art from the Zotov's collection and paintings by Nikolai Zotov, Nina Zotova and Galina Lyogkaya, to June 5 in Pavilion 13. Located near M. VDNKh. Ticket office open 11 a.m. to 7:30 p.m., Thurs. noon to 8:30 p.m., closed Mon. 495-544-3400, www.vdnh.ru, 495-691-9614/0212, www.orientmuseum.ru

Osnova Gallery at Winzavod Center of Contemporary Art:

Patterns: sculptural and photo works by Spanish artist Raul Diaz Reyes, to May 15. Located at 1 4th Syromyatnichesky Pereulok, Bldg. 6, entrance 22. M. Chkalovskaya, Kurskaya. Noon to 8 p.m., closed Mon. 8-926-887-3987, osnovagallery.ru

Pop/off/art Gallery at Winzavod Center of Contemporary Art:

Gloomy Pictures: St. Petersburg in recent paintings by Vladimir Shinkaryov, to April 17. Located at 1 4th Syromyatnichesky Pereulok, Bldg. 6. M. Chkalovskaya, Kurskaya. Noon to 8 p.m., closed Mon. 495-775-8706, popoffart.com

Pushkin Museum of Fine Arts:

Erwin Olaf. Hommage to Louis Gallait: series of works by contemporary Dutch photographer Erwin Olaf dedicated to the 19th-century Belgian artist Louis Gallait's legendary painting "The Last Honors Paid to Counts Egmont and Horn," to April 24.

NEW Olympia by Eduard Manet from the Musee d'Orsay collection, April 19 to July 17.

MT PICK The Cranachs: works by German artists Lucas Cranach the Elder (1472–1553) and his

son Lucas Cranach the Younger (1515–86) from European and Russian museums, to May 15.

The Notion of a Perfect Painter (Ponyatiye o Sovershennom Zhivopistse): training methods of the 18th-century Russian academic school in gravures and books, to May 22.

Two Amenemhats. Portraits of One Tsar From the Middle Kingdom (Dva Amenemkheta. Portrety Odnogo Tsarya Epokhi Srednego Tsarstva): Pushkin Museum of Fine Arts and the Hermitage Museum show two statues of pharaoh Amenemhat III, to May 1.

MT PICK Viktor Pivovarov shows the Lost Keys recent series of paintings on the themes of the Renaissance art, to May 15. Located at 12 Ulitsa Volkhonka. M. Kropotkinskaya. 10 a.m. to 7 p.m., Thurs. to 9 p.m., closed Mon. 495-697-9578, www.arts-museum.ru

Regina Gallery at Winzavod Center of Contemporary Art:

Marbles From Hiroshima: paintings by Vlad Kulkov, to April 17. Located at 14th Syromyatnichesky Pereulok. M. Chkalovskaya, Kurskaya. 11 a.m. to 7 p.m., closed Sun. and Mon. Free admission. 495-228-1330, www.reginagallery.com

RuArts Gallery:

FESTIVAL Photobiennale: Gravity: new series of works by Vladimir Glynin, to May 28. Located at 10 1st Zachatyevsky Pereulok. M. Kropotkinskaya. Noon to 8 p.m. Free admission. 495-637-4475, www.ruarts.ru

S'Art Gallery:

Street Art 2015: selected works, to June 20. Located at Kurkino, 2 Vorotynskaya Ul., Bldg. 1. M. Planernaya, then bus 268 to Chetyrnadtsaty Mikrorayon. By appointment. 499-500-2366.

Shchusev Architecture Museum:

MT PICK Moscow Metro: Moscow Metro history in graphics and photographs, to July 17. Located at 5 Vozdvizhenka. M. Biblioteka Imeni Lenina, Arbatskaya, Alexandrovsky Sad. Ticket office open 11 a.m. to 6 p.m., Thurs. 1 to 7 p.m., closed Mon. 495-691-2109, www.muar.ru

Solyanka VPA:

The Andalusian Dog Cinema Theater: cinema club dedicated to most important surrealist films, to May 21. Located at 1/2 Ulitsa Solyanka. M. Kitai-Gorod. Tues. to Thurs. 2 to 10 p.m., Fri. noon to midnight, Sat. and Sun. noon to 10 p.m. 495-621-5672, solyanka.org

State Center of Contemporary Art:

NEW Innovation: exhibit of works by the nominees of this annual competition in the field of contemporary art, to May 29. Located at 13 Zoologicheskaya Ulitsa. M. Krasnopresnenskaya. Noon to 8 p.m., Thurs. noon to 9 p.m., closed Mon. 499-254-8492/0674, www.ncca.ru

The Patriotic War of 1812 Museum:

Decembrists' Wives (Zhyony Dekabristov) in graphics, photographs, miniatures and documents from the museum collection, to May 30. Located at 2/3 Ploshchad Revolyutsii. M. Ploshchad Revolyutsii. Ticket office open 10 a.m. to 5:30 p.m., Fri. and Sat. 10 a.m. to 8 p.m. 495-692-4019/3731, www.1812shm.ru

Tretyakov Gallery:

MT PICK Fyodor Rokotov (1735-1808): portraits from major Russian museums, to May 9 in the Engineer Wing.

Woodcuts From the Tretyakov Gallery Collection, to May 15. Located at 10/12 Lavrushinsky Pereulok. M. Tretyakovskaya. Ticket office open Tues., Wed., Sat. and Sun. 10 a.m. to 5 p.m., Thurs. and Fri. 10 a.m. to 8 p.m., closed Mon. 499-230-7788, 238-1378, 495-951-1362. An Autoline minibus runs from outside the Tretyakov Gallery to the New Tretyakov Gallery at 10 Krymsky Val daily at noon, 1, 2, 3, 4 and 5 p.m., www.tretyakovgallery.ru

Triumph Gallery:

NEW Classical Roses (Klassicheskiye Rozy): new series of acrylic paintings on paper, to April 24. Located at 3/8 Ulitsa Ilyinka. M. Ploshchad Revolyutsii. 11 a.m. to 8 p.m. Free admission. 495-662-0893, triumph-gallery.com

Tsaritsyno Museum:

English Caricatures from the 18th and the early 19th century from Russian archives, to July 3 in Khleby Dom.

The Wooden Gold of Khokhloma (Derevyannoye Zoloto Khokhlomy): items of Russian folk art from the museum collection, to Aug. 14. Located at 1 Dolskaya Ulitsa. M. Tsaritsyno, Orekhovo. Ticket office open 11 a.m. to 5:30 p.m., Sat. 11 a.m. to 7:30 p.m., Sun. and holidays 11 a.m. to 6:30 p.m., closed Mon. Park open daily 6 a.m. to midnight. 499-725-7287, www.tsaritsyno-museum.ru

VDNKh:

Microscope Life (Zhizn pod Mikroskopom): 2016 Welcome Image Awards winning images, to May 15 in Pavilion 26. Located near M. VDNKh. Tues. to Fri. 10 a.m. to 7 p.m., Sat. and Sun. 10 a.m. to 9 p.m., closed Mon. 495-544-3400, www.vdnh.ru

Yekaterina Cultural Foundation:

Selected. 2000-2005: Yekaterina and Vladimir Semenikhin show their collection of Russian contemporary art, to July 31. Located at 21 Kuznetsky Most, entrance No. 8 from Ul. Bolshaya Lubyanka. M. Kuznetsky Most. Ticket office open 11 a.m. to 7:30 p.m., closed Mon. 495-621-5522, www.ekaterina-fondation.ru

Zurab Tsereteli Arts Gallery:

Zakhar Kozlovsky shows a new series of photo works, to April 17. Located at 19 Prechistenka. M. Kropotkinskaya. Noon to 8 p.m., Sun. noon to 7 p.m., closed Mon. 495-637-2569/4771,

Permanent Displays

Alexander Fersman Mineralogical Museum:

Minerals from all over the world. Located at 18 Leninsky Prospekt, Bldg. 2. M. Oktyabrskaya, Leninsky Prospekt, then any bus to Bolnitsa Svyatitelya Alexia. 11 a.m. to 4 p.m., closed Mon. and Tues. 495-954-3900, www.fmm.ru

Alexander Goldenweiser Apartment Museum:

Memorial Apartment of this distinguished Russian pianist and composer. Located at 17 Tverskaya Ulitsa, apt. 110. M. Tverskaya. Tues., Wed. and Sat. 11 a.m. to 6 p.m., Thurs. and Fri. noon to 9 p.m., closed Sun., Mon. and the last Wednesday of the month. 495-629-2929, glinka.museum/contacts/muzey-kvartira-a-b-goldenveyzera-.php

Alexander Herzen House Museum:

Small Mansion where the Russian civic philosopher Alexander Herzen (1812-70), best known for his autobiographical book "My Past and Thoughts" and social novel "Who Is to Blame?" lived before leaving Russia. Located at 27 Sivtsev Vrazhek. M. Kropotkinskaya, Smolenskaya. Ticket office open 11 a.m. to 5:30 p.m., Thurs. 2 to 7:30 p.m., closed Mon. and the last day of the month. 499-241-5859, www.goslitmuz.ru/ru/herzen-museum

Alexander Ostrovsky House Museum:

Permanent display about the life and work of this 19th-century Russian playwright who almost single-handedly created a Russian national repertoire. Located at 9 Malaya Ordynka, Bldg. 1. M. Polyanka, Tretyakovskaya. Ticket office open noon to 6:30 p.m., Thurs. 1 to 8:30 p.m., closed Mon., Tues. and the last Fri. of the month. 495-953-8684, www.bakhrushin.theatre.ru/branches/dmo

Alexander Pushkin Memorial Apartment on Arbat:

Pushkin and Moscow: permanent display. Located at 53 Ulitsa Arbat. M. Smolenskaya. Ticket office open 10 a.m. to 5:30 p.m., Thurs. noon to 8:30 p.m., closed Mon., Tues. and the last Friday of the month. 499-241-9295, www.pushkinmuseum.ru

Alexander Pushkin Museum:

Open Storage of rare books, paintings, graphics, porcelain, bronzes, ceramics, genealogical materials and private collections.

Pushkin and His Age (Pushkin i Yego Epokha): permanent display.

Pushkin's Tales (Skazki Pushkina): permanent display. Located at 12/2 Ulitsa Prechistenka. M.

Kropotkinskaya. Ticket office open 10 a.m. to 5:30 p.m., Thurs. noon to 8:30 p.m., closed Mon. and the last Fri. of the month. 495-637-5674, www.pushkinmuseum.ru

Alexander Scriabin Memorial Museum:

Permanent display: the house furnished as it was when the composer lived here from 1912 to 1915, including the library, paintings and pianos. Located at 11 Bolshoi Nikolopeskovsky Pereulok. M. Smolenskaya, Arbatskaya. Wed., Fri., Sat. and Sun. 11 a.m. to 6 p.m., Thurs. 1 to 9 p.m., closed Mon., Tues. and the last Friday of the month. 499-241-1901, www.anscriabin.ru

Anatoly Lunacharsky Memorial Study:

Permanent display: an exhibit devoted to Anatoly Lunacharsky (1875-1933) — Russian writer, translator, essayist, art critic, politician and the first Soviet Commissar of Enlightenment responsible for culture and education. Located at 9/5 Denezhny Pereulok, Apt. 1. M. Smolenskaya. By appointment 499-241-8873, www.goslitmuz.ru/ru/lunacharsky-museum

Andrei Bely Apartment Museum:

Permanent display: personal belongings, portraits and rare archive materials of this acclaimed Silver Age poet and novelist. Located at 55 Ulitsa Arbat. M. Smolenskaya. Ticket office open 10 a.m. to 5:30 p.m., Thurs. noon to 8:30 p.m., closed Mon., Tues. and the last Friday of the month. 499-241-9295, www.pushkinmuseum.ru, kvartira-belogo.guru.ru

Andrei Rublev Museum of Early Russian Culture and Art:

Permanent display: icons, wall paintings, decorative art, manuscripts and black-letter books in the restored buildings of the former Spaso-Andronikov Monastery. Located at 10 Andronyevskaya Ploshchad. M. Rimsкая, Ploshchad Iliche. Ticket office open 11 a.m. to 5:15 p.m., closed Wed. and the last Friday of the month. 495-678-1467, www.rublev-museum.ru

Andrei Sakharov Museum and Public Center:

Permanent display devoted to the legacy of this human rights activist and physicist chronicles the political repression of Soviet citizens from 1917 to the 1980s with photographs and documentary materials. Located at 57 Zemlyanoi Val, Bldg. 6. M. Kurskaya. Ticket office open 11 a.m. to 7 p.m., closed Mon. 495-623-4401/4420, www.sakharov-center.ru

Anna Golubkina Studio Museum:

Collection of Sculptures by this prominent master of the Silver Age art culture, a student of Rodin. Located at 12 Bolshoi Lyovshinsky Pereulok. M. Park Kultury, Smolenskaya. Wed., Thurs. and Fri. noon to 6 p.m., Sat. and Sun. 10 a.m. to 4 p.m., closed Mon. and the last Friday of the month. 495-637-2564/5682, www.tretyakovgallery.ru/ru/museum/branch/museum_studio_golubkina

Anton Chekhov House Museum:

Permanent display: the writer's Moscow apartment, with a small display of photos and manuscripts. Located at 6 Sadovaya-Kudrinskaya Ulitsa. M. Barrikadnaya. Tues., Thurs.,

Sat. 11 a.m. to 6 p.m., Wed., Fri. 2 to 8 p.m., closed Mon. and the last day of the month.
495-691-6154/3837, www.goslitmuz.ru/ru/chekhov-museum

Anton Chekhov Memorial Museum affiliate:

Lopasnya-Zachatyevskoye Estate Museum: park with seven ponds and a main building, known first as the Goncharov House and later as the Pushkin Nest. The exhibit illuminates ties among the estate-owning family the Vasilchikovs and the Pushkins, Lanskies and Goncharovs. Located in Chekhov, 10 Ulitsa Pushkina. M. Yuznaya, then bus 365 to Skver Imeni Chekhova. 10 a.m. to 5 p.m., closed Mon. and the last Friday of the month.
496-723-0389, www.chekhov-melikhovo.com/index.php/en/museum-melikhovo/lopasnya

Anton Chekhov Memorial Museum at Melikhovo:

Permanent display: the house furnished more or less as it was when the writer lived there from 1892 to 1899 and wrote the famous play "The Seagull." Located in Melikhovo, from Kursky Station to Chekhov, then bus 25. 10 a.m. to 5 p.m., closed Mon. and the last Friday of the month. 499-270-7991, www.chekhov-melikhovo.com

Arkhangelskoye Estate Museum:

18th-Century Palace and Park Ensemble (Dvortsovo-Parkovy Ansambl 18 Veka) features works from the collection of Count Yusupov. Located at Posyolok Arkhangelskoye, 5th kilometer of Ilyinskoye Shosse. M. Tushinskaya, then bus 549 to Arkhangelskoye or bus 151 to Sanatory. Park open 10 a.m. to 6 p.m. Exhibitions open 10 a.m. to 5 p.m., Sat., Sun. and holidays 10 a.m. to 6 p.m., closed Mon., Tues. and the last Wed. of the month.
495-797-5409, www.arhangelskoe.su

Art Deco Museum:

Mkrtich Okroyan's Collection of Art Deco sculptures, furniture and decorative art. Located at 2/4 Luzhnetskaya Naberezhnaya, Bldg. 4. M. Vorobyovy Gory. Tues. to Sat. 11 a.m. to 9 p.m., closed Mon. and Sun. 495-639-9484, www.artdecomuseum.ru

Art4.ru:

Contemporary Russian Art collected by Igor Markin and housed in a private museum. Located at 4 Khlynovsky Tupik. M. Tverskaya. By appointment 499-136-5656, art4.ru

AZ Museum:

Anatoly Zverev Museum: multimedia private museum devoted to life and work of this avant-garde expressionist artist. Information leaflets in English are available. Located at 20-22 2nd Tverskaya-Yamskaya Ulitsa. M. Mayakovskaya. Ticket office open noon to 7 p.m., closed Mon. 495-730-5526, www.museum-az.com

Bakhrushin Theater Museum:

Golden Age of Russian Theater (Zolotoi Vek Russkogo Teatra): posters, photos, costumes and other memorabilia of famous Russian actors and directors of the last two centuries.

Located at 31/12 Ulitsa Bakhrushina. M. Paveletskaya. Ticket office open noon to 6:30 p.m., Thurs. 1 to 8:30 p.m., closed Mon., Tues. and the last Fri. of the month 495-953-4470/4848, www.gctm.ru/museum

Bogoroditse-Smolensky Novodevichy Convent:

Novodevichy Convent and Cemetery: A beautiful 17th-century complex that was founded in 1524 by Tsar Vasily III, then, after the Time of Troubles, was significantly rebuilt and enhanced by the Regent Sofia, who was later confined here by Peter the Great with his unwanted first wife. Now belongs to the Moscow Eparchy of the Russian Orthodox Church. Located at 1 Novodevichy Proyezd. M. Sportivnaya. 499-245-3168, www.mepar.ru/eparhy/temples/?temple=1166

Boris Pasternak Museum:

Permanent Display: The famous dacha home where the author of "Dr. Zhivago" weathered attacks after being awarded the 1958 Nobel Prize for Literature. Located in Peredelkino, 3 Ulitsa Pavlenko. From Kievsky Station to Peredelkino. Ticket office open 11 a.m. to 5:30 p.m., Thurs. 1 to 7:30 p.m., closed Mon. and the last day of the month. 495-934-5175, www.pasternakmuseum.ru/index_angl.html

Bulgakov House:

Odd Flat: The communal apartment, in which Mikhail Bulgakov lived from 1921 to 1924, and which became the prototype of the "Odd Flat" where Woland resided with his court. Displays, performances, exhibits and excursions highlighting the life and work of Mikhail Bulgakov and his novel "The Master and Margarita." Located at 10 Bolshaya Sadovaya Ulitsa through the arch, Apt. 50. M. Mayakovskaya. 1 to 11 p.m., Fri. and Sat. 1 p.m. to 1 a.m. Free admission. 495-970-01619, www.dombulgakova.ru

Center for Oceanography and Marine Biology:

Mosquarium: Entertainment and educational programs include aquariums and live shows. Aquarium open 10 a.m. to 9 p.m., shows Thurs. to Sat. at 7 p.m., Sun. at 3 Located at 119 Prospekt Mira on the VDNKh territory, Bldg. 23. M. VDNKH. 499-677-7777, www.moskvarium.ru

Christ the Savior Cathedral Museum:

History of the Christ the Savior Cathedral: permanent display. Located at 15 Ulitsa Volkhonka. M. Kropotkinskaya. 10 a.m. to 6 p.m., closed the last Monday of the month. 495-924-8058/8490, www.xxc.ru/complex/museum/index.htm

Darwin Museum:

Permanent displays: Macroevolution, Microevolution, Zoogeography, The Diversity of Life on Earth, Live Exhibition and others. Located at 57 Ulitsa Vavilova. M. Akademicheskaya. Ticket office open 10 a.m. to 6 p.m., Thurs. 1 to 9 p.m. closed Mon. and the last Fri. of the month. 499-134-6124, 783-2253, www.darwin.museum.ru/eng

English Courtyard Museum:

Russian-English Trade Relations (Russko-Angliiskiy Torgoviy Otnosheniya): This building, the cultural and commercial center of the English community in Moscow in the 16th and 17th centuries, reflects the development of Russian-English relations through the centuries.

Located at 4A Ulitsa Varvarka. M. Kitai-Gorod. Ticket office open 10 a.m. to 5:30 p.m., Thurs. 1 to 8:30 p.m., closed Mon. and the last Friday of the month. 495-698-3952, www.mosmuseum.ru/museum-menu-english-dvor.html

Fyodor Dostoevsky Apartment Museum:

Permanent display: a small exhibit devoted to the author of "Crime and Punishment" and "The Brothers Karamazov" in the house where he lived as a child. Located at 2 Ulitsa Dostoyevskogo. M. Novoslobodskaya. Ticket office open 11 a.m. to 5:30 p.m., Wed. and Thurs. 1 to 7:30 p.m., closed Mon. and the last day of the month. 495-681-1085, www.goslitmuz.ru/ru/dostoyevsky-museum

Gogol House:

Memorial Museum and Scholarly Library in this Moscow estate house where Nikolai Gogol spent his four last years. Located at 7A Nikitsky Bulvar. M. Arbatskaya. Mon., Wed., Fri. noon to 7 p.m., Thurs. 2 to 9 p.m., Sat. and Sun. noon to 5 p.m., closed Tues. and the last day of the month. 495-9256, www.domgogolya.ru

Historical Museum:

The Bronze Age (Epokha Bronzy): permanent display.

The History of Russia From Ancient Times to the Early 20th Century (Istoriya Rossii s Drevneishikh Vremyon do Nachala 20 Veka): permanent display. Located at 1/2 Red Square. M. Ploshchad Revolyutsii. Ticket office open Mon., Wed. Thurs., Sun. 10 a.m. to 5:30 p.m., Fri. and Sat.. 10 a.m. to 8 p.m., closed Tues. 495-692-4019, www.shm.ru

Historical Museum affiliate:

The Patriotic War of 1812 Museum (Muzei Otechestvennoi Voyny 1812 Goda): permanent historical exhibit. Located at 2/3 Ploshchad Revolyutsii. M. Ploshchad Revolyutsii. Ticket office open 10 a.m. to 5:30 p.m., Fri. and Sat. 10 a.m. to 8 p.m. 495-692-4019/3731, www.1812shm.ru

The Romanov Chambers in Zaryadye: authentic interiors of a 17th-century Russia boyar home. Located at 10 Ulitsa Varvarka. M. Kitai-Gorod. Ticket office open 10 a.m. to 5 p.m., Wed. 11 a.m. to 6 p.m., closed Tues. and the first Mon. of the week. 495-698-1256, www.shm.ru

International Roerich Center:

Nikolai Roerich Museum: a collection of works by the great painter and philosopher known best for his landscapes of India. Located at 3/5 Maly Znamensky Pereulok. M. Kropotkinskaya. Ticket office open 11 a.m. to 6:30 p.m., closed Mon. 499-271-3417, www.icr.su

Ivan Turgenev Museum:

Moscow. Ostozhenka. Turgenev: permanent display about the life and work of this beloved novelist, playwright and poet. 37 Ulitsa Ostozhenka. M. Park Kultury. Ticket office open 10 a.m. to 5:30 p.m., Thurs. noon to 8:30 p.m., closed Mon., Tues. and the last Friday of the month. 495-695-1078, www.pushkinmuseum.ru

Jewish Museum & Tolerance Center:

History of the Jews: This multimedia interactive exposition focuses on key historical periods and begins at the Beginning Theater with a 4D film based on the Torah. Located at 11 Ulitsa Obraztsova, Bldg. 1A. M. Savyolovskaya, then two stops by bus 12 to Ulitsa Obraztsova. Sun. to Thurs. noon to 10 p.m., Fri. 10 a.m. to 3 p.m. closed Sat. and Jewish holidays. 495-645-0550, www.jewish-museum.ru

Kolomenskoye Estate Museum:

Russian Tsarist Estate: built between the 15th and 17th centuries, situated on a high bank of the Moscow River and now an architectural museum.

Stable Yard (Konyushenny Dvor): This exhibition complex includes stables with Orlov and Russian trotters, a coach house with carriages and sledges, a smithy and a hayloft.

Tsar's Feast at Kolomenskoye ('Tsarsky Pir v Kolomenskom'): multimedia reconstruction of feasts put on by Tsar Alexei Mikhailovich in the 17th century. Located at 39 Prospekt Andropova. M. Kolomenskaya, Kashirskaya. 10 a.m. to 6 p.m., closed Mon. 499-782-8917/21, mgomz.ru/kolomenskoe

Konstantin Stanislavsky Museum:

Permanent display: the home that was occupied by the co-founder of the Moscow Art Theater and the creator of the famous acting system. Located at 6 Leontyevsky Pereulok. M. Tverskaya. 11 a.m. to 6 p.m., Thurs. 11 a.m. to 9 p.m., closed Mon. and Tues. 495-629-2855, www.mxat.ru/museum

Kornei Chukovsky House Museum:

Permanent display: The famous dacha of Russia's most popular children's poet and an influential literary critic and essayist. Located in Peredelkino, 3 Ulitsa Serafimovicha. From Kievsky Station to Peredelkino. Ticket office open 11 a.m. to 5:30 p.m., Thurs. 1 to 7:30 p.m., closed Mon. and the last day of the month. 495-593-2670, goslitmuz.ru/ru/chukovsky-museum

Kuzminki Estate Museum:

Museum of Russian Estate Culture (Muzei Russkoi Usadebnoi Kultury): permanent display. Located in the Kuzminki Park at 6 Topolyovaya Alleya. M. Ryazansky Prospekt, then bus 29. Ticket office open 10 a.m. to 5:30 p.m., closed Mon. and the last Fri. of the month. 495-377-9457, 376-7610, www.kuzminky.ru

Lefortovo Museum:

Lefortovo. Landmarks of History (Lefortovo. Vekhi Istorii): the history of this Moscow district named after a close associate of Tsar Peter the Great, Franz Lefort, whose troops were stationed nearby in the German Quarter. Located at 23 Kryukovskaya Ulitsa. M. Semyonovskaya, Aviamotornaya. Ticket office open 10 a.m. to 5:30 p.m., closed Mon. and the last Fri. of the month. 495-360-0147, www.mosmuseum.ru/museum-menu-lefortovo.html

Leo Tolstoy Estate Museum in Khamovniki:

Tolstoy's Moscow Estate he lived in with his family from 1882 to 1901. Located at 21 Ulitsa Lva Tolstogo. M. Park Kultury. Ticket office open 10 a.m. to 5:30 p.m., Tues. and Thurs. noon to 7:30 p.m., closed Mon. and the last Friday of the month. 499-246-9444, tolstoymuseum.ru

Leo Tolstoy Museum:

Leo Tolstoy Center Na Pyatnitskoi serves as the museum's exhibition hall. Located at 12 Pyatnitskaya Ulitsa. M. Novokuznetskaya. Ticket office open 10 a.m. to 5:30 p.m., Tues. and Thurs. noon to 7:30 p.m., closed Mon. and the last Friday of the month. 495-951-6440, tolstoymuseum.ru

Main Literary Exposition on Prechistenka about the life and writing career of the author of "War and Peace" and "Anna Karenina." Rare editions and manuscripts are available in reading rooms. Located at 11 Ulitsa Prechistenka. M. Kropotkinskaya. Ticket office open 10 a.m. to 5:30 p.m., Tues. and Thurs. noon to 7:30 p.m., closed Mon. and the last Friday of the month. 499-766-9328. tolstoymuseum.ru

Lyublino Estate Museum:

Durasov Palace: perfectly preserved, early 19th-century manor that belonged to Moscow landowner Nikolai Durasov.

Palace and Park Ensemble, built by Moscow landowner Nikolai Durasov, represents the mode of life of the 19th-century Moscow nobility. Located at 1 Letnyaya Ulitsa. M. Volzhskaya. 10 a.m. to 6 p.m., closed Mon. 499-722-7189, mgomz.ru/lublino

Maria Yermolova Museum:

Permanent display: a small but elegant apartment museum dedicated to the great Maly Theater actress of the end of the 19th century. Located at 11 Tverskoi Bulvar. M. Tverskaya. Noon to 7 p.m., Thurs. 1 to 9 p.m. closed Tues. and the last Fri. the month. 495-690-5416/4901, www.bakhrushin.theatre.ru/branches/dme

Marina Tsvetayeva Museum:

Permanent display: house museum where the poet lived from 1914 to 1922. Located at 6 Borisoglebsky Pereulok. M. Arbatskaya, Smolenskaya. Noon to 5:30 p.m., Thurs. noon to 8:30 p.m., closed Mon. and the last Friday of the month. 495-697-5369, www.dommuseum.ru

Mikhail Glinka Museum of Musical Culture:

Permanent display of musical instruments. Located at 4 Ulitsa Fadeyeva. M. Mayakovskaya. Wed., Sat. 11 a.m. to 7 p.m., Thurs., Fri. noon to 9 p.m., Sun. 11 a.m. to 6 p.m., closed Mon. and Tues. 495-739-6226/87, www.glinka.museum

Mikhail Prishvin House Museum:

Summer Estate of Russian writer Mikhail Prishvin (1873-1954). Located at 2 Dunino Village. M. Molodyozhnaya, then bus 121 to Lesniye Dali, ticket office open 11 a.m. to 5:30 p.m., Thurs. 1 to 6:30 p.m., closed Mon. 499-553-8132, www.prishvin.ru

Mikhail Shchepkin House Museum:

Permanent display, about the life and work of this 19th-century Russian actor. Located at 47 Ulitsa Shchepkina, Bldg. 2. M. Prospekt Mira. Ticket office open Wed., Fri., Sat., Sun. noon to 7 p.m., Thurs. 1 to 6:30 p.m., closed Mon., Tues. and the last Fri. of the month. 495-600-6149, bakhrushin.theatre.ru/branches/dmsch

Moscow Kremlin:

The Diamond Fund (Almazny Fond): items from the State Fund collection. Located at the Moscow Kremlin. Borovitsky Gate entrance. M. Borovitskaya. 10 a.m. to 5 p.m., closed Thurs. 495-699-2036, gokhran.ru/ru/exhibition

Moscow Kremlin Museums:

The Armory Chamber (Oruzheinaya Palata), the Patriarchy Palace (Patriarshiye Palaty), the Ivan the Great Belfry (Kolokolnya Ivana Velikogo), the Assumption Cathedral (Uspensky Sobor), the Archangel Cathedral (Arkhangelsky Sobor) and other cathedrals. Located at the Moscow Kremlin. Borovitsky Gate entrance. M. Borovitskaya. 10 a.m. to 5 p.m., closed Thurs. 495-695-4146, www.kreml.ru/en

Moscow Planetarium:

Permanent shows: interactive museum with the Lunarium, Big and Small Star Halls, the Urania Museum and 4D Cinema Theater. Located at 5 Sadovaya-Kudrinskaya Ulitsa. M. Barrikadnaya. 9 a.m. to 9 p.m., weekends and holidays 10 a.m. to 10 p.m., closed Tues. 495-221-7690, www.planetarium-moscow.ru

Museum of Decorative, Applied and Folk Art:

Russian Decorative, Applied and Folk Art Collections from the 18th to the 20th century. Located at 3 Delegatskaya Ulitsa. M. Tsvetnoi Bulvar. Ticket office open 11 a.m. to 5 p.m., closed Tues. and the last Mon. of the month. 495-609-0146, Thurs. 10 a.m. to 8 p.m., www.vmdpni.ru

Museum of Jewish History in Russia:

Permanent display: artifacts representing the history of Jews who lived under Russian rule

after the three partitions of Poland. Located at 10 Petrovsko-Razumovskaya Alleya, Bldg.3. M. Dynamo. Mon. to Wed. and Fri. noon to 7 p.m., Thurs. noon to 9 p.m., Sun. noon to 5 p.m., closed Sat. Free admission. 495-656-4571, www.mievr.ru

Museum of Moscow:

The History of Moscow from old times to the present. Located at 2 Zubovsky Bulvar, entrance from Ostozhenka. M. Park Kultury. Ticket office open Tues., Wed., Fri. 10 a.m. to 5:30 p.m., Sat., Sun. 11 a.m. to 5:30 p.m., closed Mon. and the last Friday of the month. 499-766-4196, www.mosmuseum.ru

Museum of Private Collections:

Permanent display in 23 halls includes 1,500 works of art. Located at 10 Ulitsa Volkhonka. M. Kropotkinskaya. 11 a.m. to 7 p.m., Thurs. 11 a.m. to 9 p.m., closed Mon. and Tues. 495-697-1610, www.arts-museum.ru

Museum of Russian Icons:

East European Christian Art from the 6th to the 20th century. Located at 3 Goncharnaya Naberezhnaya, entrance from Bolshoi Vatin Pereulok. M. Taganskaya. 11 a.m. to 7 p.m., closed Wed. 495-221-5283, www.russikona.ru

Museum of the Contemporary History of Russia:

From the English Club to the Museum of the Contemporary History of Russia: permanent display. Located at 21 Tverskaya Ulitsa, M. Tverskaya. Ticket office open Tues., Wed. and Fri. 10 a.m. to 5:30 p.m., Thurs. and Sat. 11 a.m. to 6:30 p.m., Sun. 10 a.m. to 4:30 p.m., closed Mon. 495-699-5458, www.sovr.ru

Museum of Unique Dolls:

Collection of Antique Dolls. Located at 13 Ulitsa Pokrovka. M. Turgenevskaya, Kitai-Gorod, Chistiye Prudy. Fri., Sat. Sun. 10 a.m. to 6 p.m., Tues., Wed. Thurs. excursions at noon, 2 and 6 p.m., closed Mon. Free admission. 495-625-6405/7512, www.dollmuseum.ru

Nemirovich-Danchenko Apartment Museum:

Permanent display: the home that was occupied by Vladimir Nemirovich-Danchenko, stage director, playwright and co-founder of the Moscow Art Theater. Located at 5/7 Glinishchevsky Pereulok, entrance 5, apt. 52. M. Tverskaya. 11 a.m. to 5:30 p.m., closed Mon. and Tues. 495-650-5391, www.mxat.ru/museum

New Tretyakov Gallery:

Alexander Rodchenko. Workers Club: (1885-1953): The reconstructed interior of a club for workers designed by this constructivist artist.

Main exhibit halls: a display of 20th-century Russian art. Located at 10 Krymsky Val. M. Oktyabrskaya, Park Kultury. Ticket office open 10 a.m. to 6:30 p.m., closed Mon.

499-230-7788, 238-1378, 495-951-1362. Excursions 495-953-5223. An Autoline minibus runs from outside the New Tretyakov Gallery to the Tretyakov Gallery at 10/12 Lavrushinsky Pereulok daily at 12:20, 1:20, 2:20, 3:20 and 4:20 p.m., www.tretyakovgallery.ru

New Western Art Gallery:

European and American Art from the 19th and 20th centuries. Located at 14 Ulitsa Volkhonka. M. Kropotkinskaya. 10 a.m. to 7 p.m., Thurs. 10 a.m. to 9 p.m., closed Mon. 495-697-1546, www.arts-museum.ru, www.newpaintart.ru

Nikolai Golovanov Apartment Museum:

Memorial Apartment of this distinguished conductor who was expelled from the Bolshoi Theater three times, in 1928, 1936 and 1953. Located at 7 Bryusov Pereulok, apt. 10. M. Tverskaya, Pushkinskaya. Tues., Wed. and Sat. 11 a.m. to 6 p.m., Thurs. and Fri. noon to 9 p.m., closed Sun., Mon. and the last Wednesday of the month. 495-629-7083, glinka.museum/contacts/muzey-kvartira-n-s-golovanova.php

Oriental Art Museum:

Extra Storeroom (Osobaya Kladovaya): North Caucasian archeological findings from the 5th century BC to the 14th century AD. Located at 12 Nikitsky Bulvar. M. Arbatskaya. Ticket office open 11 a.m. to 7:30 p.m., Thurs. noon to 8:30 p.m., closed Mon. Reservations required. 495-691-9614/0212, www.orientmuseum.ru

Permanent Displays: the art of Korea, India, Iran, China, Asia, Siberia and other locations. Located at 12 Nikitsky Bulvar. M. Arbatskaya. Ticket office open 11 a.m. to 7:30 p.m., Thurs. noon to 8:30 p.m., closed Mon. 495-691-9614/0212, www.orientmuseum.ru

Pushkin Museum of Fine Arts:

Permanent collection: works from ancient Egypt, Assyria, Greece and Rome, plus works from the Middle Ages to the early 20th century. Located at 12 Ulitsa Volkhonka. M. Kropotkinskaya. 10 a.m. to 7 p.m., Thurs. to 9 p.m., closed Mon. 495-697-9578, www.arts-museum.ru

Sergei Kononov Studio Museum:

Permanent display: works by this influential Russian and Soviet sculptor who spent more than 20 years in the United States and returned home in 1945 at the age of 71. Located at 17 Tverskaya Ulitsa. M. Tverskaya, Pushkinskaya. Ticket office open 11 a.m. to 6:30 p.m., closed Mon., Tues. and the last Friday of the month. 495-629-6139, www.rah.ru/museums/muzey_masterskaya_s_t_konenkova.php

Sergei Prokofiev Museum:

Memorial Apartment where the composer lived from 1947 to 1953. Located at 6 Kamergersky Pereulok. M. Teatralnaya, Okhotny Ryad. Wed., Sat. 11 a.m. to 7 p.m., Thurs., Fri. noon to 9 p.m., Sun. 11 a.m. to 6 p.m., closed Mon., Tues. and the last Wednesday of the month, 495-692-0567, glinka.museum/contacts/muzey-s-s-prokofeva-.php

Silver Age Museum:

Bryusov House: permanent displays "Valery Bryusov Memorial Study" and "Pushkin and the Silver Age of Russian Literature." Located at 30 Prospekt Mira. M. Prospekt Mira (circle line). Ticket office open 11 a.m. to 5:30 p.m., Thurs. and Fri. 1 to 8:30 p.m., closed Mon. and the last day of the month. 495-680-8683, www.goslitmuz.ru/ru/bryusov-museum

St. Basil's Cathedral:

Sacred Relics of the Pokrovsky Cathedral (Svyatyni Pokrovskogo Sobora): stunning medieval interior, icons, books and other religious relics. Located at 2 Red Square. M. Ploshchad Revolyutsii. Ticket office open in summer 11 a.m. to 6:30 p.m., in winter 11 a.m. to 4:30 p.m., 495-698-3304 www.saintbasil.ru

State Literary Museum:

Books, Manuscripts and other items that tell the stories of Russia's great writers. Located at 28 Ulitsa Petrovka. M. Chekhovskaya. 11 a.m. to 6 p.m., Thurs. 2 to 8 p.m., closed Mon. 495-625-1226, goslitmuz.ru

Svyatoslav Richter Memorial Apartment:

The Great Pianist's Apartment with a display of photos and paintings, video and sound recordings. Located at 2/6 Bolshaya Bronnaya Ulitsa, Apt. 59. M. Pushkinskaya. By appointment Tues., Thurs. and the third Saturday of the month noon to 2 p.m. 495-695-8346, 697-7205, www.sviatoslav-richter.ru

Tchaikovsky and Moscow Museum:

Memorial apartment where the composer lived from September 1872 to November 1873. Located at 46/54 Kudrinskaya Ploshchad. M. Barrikadnaya. Wed., Sat. 11 a.m. to 7 p.m., Thurs., Fri. noon to 9 p.m., Sun. 11 a.m. to 6 p.m., closed Mon., Tues. and the last Wednesday of the month, 495-691-1514, glinka.museum/contacts/muzey-p-i-chaykovskiy-i-moskva-.php

The GULAG History Museum:

Permanent display: documents, letters, memoirs and personal belongings of GULAG prisoners. Located at 9 1st Samotyochny Pereulok, Bldg. 1. M. Dostoevskaya, Novoslobodskaya. Ticket office open 11 a.m. to 6 p.m., Thurs. noon to 9 p.m., closed Mon. and the last Friday of the week. 495-621-7310, www.gmig.ru

Tretyakov Gallery:

Main exhibit halls: masterpieces of Russian icon art and world-famous 19th- and early 20th-century paintings. Located at 10/12 Lavrushinsky Pereulok. M. Tretyakovskaya. Ticket office open Tues., Wed., Sat. and Sun. 10 a.m. to 5 p.m., Thurs. and Fri. 10 a.m. to 8 p.m., closed Mon. 499-230-7788, 238-1378, 495-951-1362. An Autoline minibus runs from outside the Tretyakov Gallery to the New Tretyakov Gallery at 10 Krymsky Val daily at noon, 1, 2, 3, 4 and 5 p.m., www.tretyakovgallery.ru

Tsaritsyno Museum:

Catherine the Great: (Velikaya Yekaterina): an exhibit dedicated to the Russian empress.

Masterpieces of the Tsaritsyno Art Collection (Shedevry Khudozhestvennogo Sobraniya Tsaritsyno): West European tapestry from the 16th to the 18th century, and 20th-century Russian glass and tapestry.

The Past and Present of Tsaritsyno (Byl i Nov Tsaritsina): the history of Tsaritsyno.

The Silver Storeroom (Serebryanaya Kladovaya): works of Russian jewelry from the 16th to the 20th century.

Tsaritsyno Antiquities (Tsaritsynskiye Drevnosti): archeological findings. Located at 1 Dolskaya Ulitsa. M. Tsaritsyno, Orekhovo. Ticket office open 11 a.m. to 5:30 p.m., Sat. 11 a.m. to 7:30 p.m., Sun. and holidays 11 a.m. to 6:30 p.m., closed Mon. Park open daily 6 a.m. to midnight. 499-725-7287, www.tsaritsyno-museum.ru

Vadim Zadorozhny's Vehicles Museum:

Antique Collection of retro cars, motorcycles, weaponry and airplanes. Located at Posyolok Arkhangelskoye, 4th km of Ilyinskoe Shosse, Bldg. 8. M. Tushinskaya, bus 541, 549, 568, 151, 541, 549, 568. M. Strogino, shuttle Strogino-Zacharkovo to Lipovaya Alleya. By car Novorizhskoe Shosse, near Arkhangelskoye. Ticket office open Tues. to Fri. 10 a.m. to 6 p.m., Sat. and Sun. 10 a.m. to 7 p.m., closed Mon. 495-662-3818, www.tnmuseum.ru

Vasily Pushkin House Museum:

Small Mansion where this Russian neoclassical poet and an uncle of Alexander Pushkin lived from 1824 to 1830. Located at 36 Staraya Basmannaya Ulitsa. M. Krasniye Vorota. Ticket office open 10 a.m. to 5:30 p.m., Thurs. noon to 8:30 p.m., closed Mon., Tues. and the last Fri. of the month. 499-263-1057, www.pushkinmuseum.ru

VDNKh:

All-Russian Exhibition Center offers various trade, cultural and art shows and fairs. Located near M. VDNKh. Gates open round-the-clock, exhibits 11 a.m. to 10 p.m., closed Mon. 495-544-3400, www.vdnh.ru

Viktor Vasnetsov House Museum:

Teremok: This Russian-style house, where the painter lived from 1894 to 1926, was built to Vasnetsov's sketches and drawings. Located at 13 Pereulok Vasnetsova. M. Prospekt Mira. 10 a.m. to 5 p.m., closed Mon., Tues. and the last Thursday of the month. 495-681-1329, www.tretyakovgallery.ru/ru/museum/branch/dmvasnecov

Vladimir Vernadsky Geological Museum:

Permanent displays: Planet Earth, the History of Earth, the World of Minerals, Geological Curiosities and other displays. Located at 11 Mokhovaya Ulitsa, Bldg. 2. M. Okhotny Ryad.

Ticket office open Tues. to Fri. 11 a.m. to 6 p.m., Sat. and Sun. noon to 6 p.m., closed Mon.
495-692-0943, www.sgm.ru

Vsevolod Meyerhold Apartment Museum:

Permanent display: a small museum devoted to the director who, until his arrest and murder in prison in 1940, was one of the world leaders of the avant-garde. Located at 12 Bryusov Pereulok, Apt. 11. M. Pushkinskaya. Ticket office open noon to 6:30 p.m., closed Mon., Tues. and the last Friday of the month. 495-629-9437, www.bakhrushin.theatre.ru/branches/mkm

Watercolor and Fine Arts Academy:

Museum of Watercolors: watercolors, drawings and book illustrations by famed Russian and West European artists from the 19th and the 20th centuries. Located at 15 Ulitsa Akademika Vargi. M. Tyoply Stan, bus 144, 227, 281 to Ulitsa Akademika Vinogradova. 11 a.m. to 7 p.m., closed Mon. and Tues. 495-531-5555, ext. 298, www.academy.andriaka.ru

Zoological Museum of Moscow University:

Permanent displays: all groups of animals, from single-celled to birds and mammals, mostly moulages. Located at 6 Bolshaya Nikitskaya Ulitsa. M. Okhotny Ryad. 10 a.m. to 5 p.m., Thurs. 1 to 8 p.m., closed Mon. and the last Tues. of the month. 495-629-4435, zmmu.msu.ru

Original url: <https://www.themoscowtimes.com/2016/04/13/exhibits-52531-a52531>