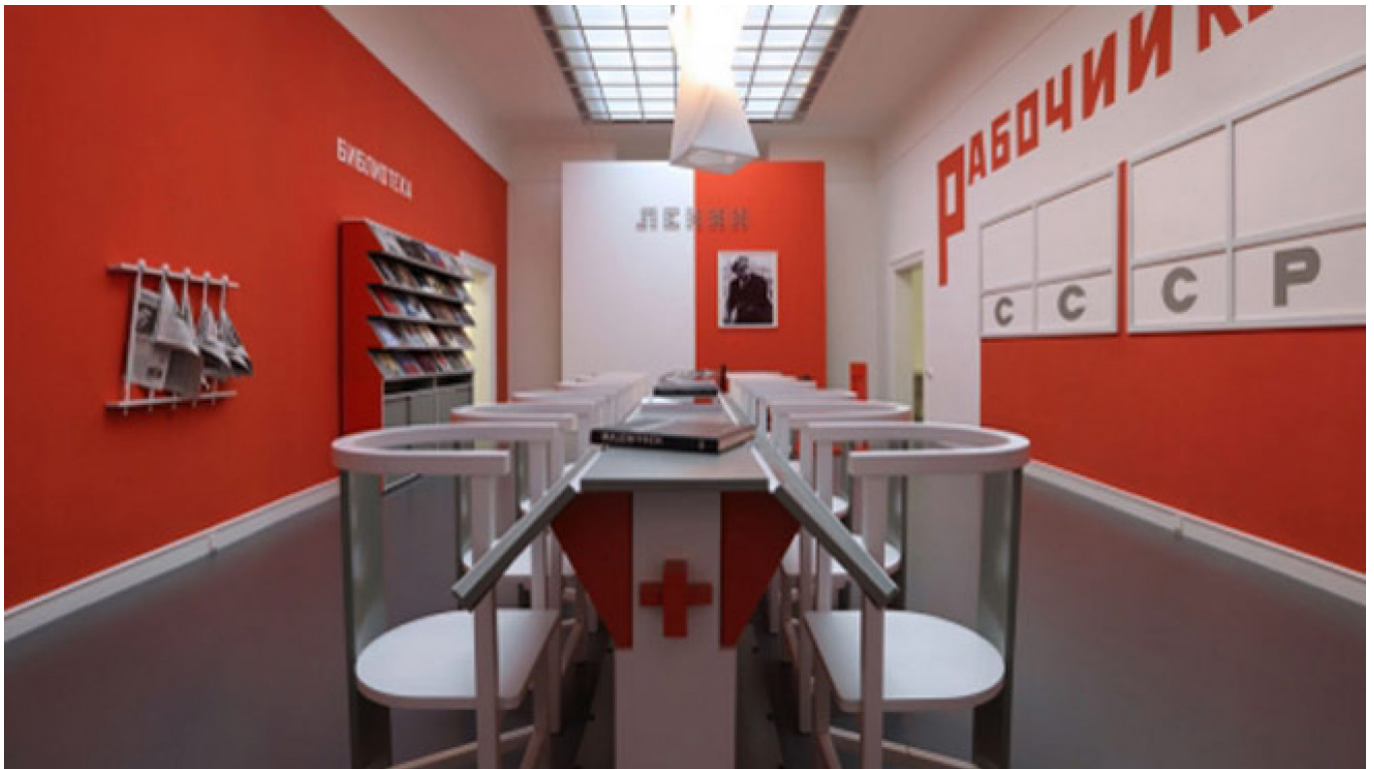


Exhibits

By [The Moscow Times](#)

December 02, 2015



Alexander Rodchenko. Workers Club: (1885-1953): The reconstructed interior of a club for workers designed by this constructivist artist, permanent display. New Tretyakov Gallery.

Alexander Fersman Mineralogical Museum:

MT PICK Permanent display: a collection of minerals from all over the world. Located at 18 Leninsky Prospekt, Bldg. 2. M. Oktyabrskaya, Leninsky Prospekt, then any bus to Bolnitsa Svyatitelya Alexia. 11 a.m. to 4 p.m., closed Mon. and Tues. 495-954-3900, www.fmm.ru

Alexander Pushkin Apartment Museum and Exhibition Hall:

Pushkin and Moscow: permanent display. Located at 55/32 Arbat, entrance from Denezhny Pereulok. M. Smolenskaya. Ticket office open 10 a.m. to 5:30 p.m., Thurs. noon to 8:30 p.m., closed Mon., Tues. and the last Friday of the month. 499-241-9295, www.pushkinmuseum.ru

Alexander Pushkin Museum:

Open Storage of rare books, paintings, graphics, porcelain, bronzes, ceramics, genealogical

materials and private collections.

Pushkin and His Age (Pushkin i Yego Epokha): permanent display.

Pushkin's Tales (Skazki Pushkina): permanent display. Located at 12/2 Ul. Prechistenka. M. Kropotkinskaya. Ticket office open 10 a.m. to 5:30 p.m., Thurs. noon to 8:30 p.m., closed Mon. and the last Fri. of the month. 495-637-5674, www.pushkinmuseum.ru

Andrei Rublev Museum of Early Russian Culture and Art:

Permanent display: icons, wall paintings, decorative art, manuscripts and black-letter books in the restored buildings of the former Spaso-Andronikov Monastery. Located at 10 Andronyevskaya Ploshchad. M. Rinskaya, Ploshchad Iliche. Ticket office open 11 a.m. to 5:15 p.m., closed Wed. and the last Friday of the month. 495-678-1467, www.rublev-museum.ru

Arkhangelskoye Estate Museum:

18th-Century Palace and Park Ensemble (Dvortsovo-Parkovy Ansambl 18 Veka) features works from the collection of Count Yusupov, permanent display.

Samovars from the 18th to the 20th century from a private collection, to Dec. 31. Located at Posyolok Arkhangelskoye, 5th kilometer of Ilyinskoye Shosse. M. Tushinskaya, then bus 549 to Arkhangelskoye or bus 151 to Sanatory. Park open 10 a.m. to 6 p.m. Exhibitions open 10 a.m. to 5 p.m., Sat., Sun. and holidays 10 a.m. to 6 p.m., closed Mon., Tues. and the last Wed. of the month. 495-797-5409, www.arhangelskoe.ru

Art Center. Moscow:

Art Treasures of Russia (Khudozhestvenniye Sokrovishcha Rossii): educational show of Russian art, to Feb. 14. Located at 15 Ul. Volkhonka on the territory of the Christ the Savior Cathedral. M. Kropotkinskaya. 10 a.m. to 5 p.m., closed Tues. 495-989-9558, artcentre.moscow

ArtStory Gallery:

MT PICK Lev Tabenkin: rare paintings from the 1980s and the 1990s, to Jan. 24. Located at 14 Staropimenovsky Pereulok. M. Tverskaya, Mayakovskaya. Noon to 8 p.m., closed Mon. 495-650-1343, www.art-story.com

Bakhrushin Theater Museum:

Golden Age of Russian Theater (Zolotoi Vek Russkogo Teatra): posters, photos, costumes and other memorabilia of famous Russian actors and directors of the last two centuries, permanent display. Located at 31/12 Ul. Bakhrushina. M. Paveletskaya. Ticket office open noon to 6:30 p.m., Thurs. 1 to 8:30 p.m., closed Mon., Tues. and the last Fri. of the month 495-953-4470/4848, www.gctm.ru/museum

Bogoroditse-Smolensky Novodevichy Convent:

Novodevichy Convent and Cemetery: A beautiful 17th-century complex that was founded in 1524 by Tsar Vasily III, then, after the Time of Troubles, was significantly rebuilt

and enhanced by the Regent Sofia, who was later confined here by Peter the Great with his unwanted first wife. Now belongs to the Moscow Eparchy of the Russian Orthodox Church. Located at 1 Novodevichy Proyezd. M. Sportivnaya. 499-245-3168, www.mepar.ru/eparhy/temples/?temple=1166

Brothers Lumiere Center of Photography:

Disappearing Africa: a series of photographs by Anton Lyalin, to Sun.

Elliott Erwitt: color works by this American advertising and documentary photographer, to Sun.

NEW Naum Granovsky's Grand Style (Bolshoi Stil Nauma Granovskogo): architectural photographs, Wed. to Jan. 24.

NEW Side Effects (Pobochniye Effekty): aerial photographs by Kacper Kowalki, Wed. to Jan. 31.

NEW The Winter Will Be Cold (Zima Budet Kholodnoi): photographs from the 1960s by Mikhail Savin, Dec. 11 to Jan. 24. Located at 3 Bolotnaya Naberezhnaya, Bldg. 1. M. Kropotkinskaya. Noon to 9 p.m., Sat. and Sun. 11 a.m. to 9 p.m., closed Mon. 495-228-9878, www.lumiere.ru

CCC Garage:

MT PICK Louise Bourgeois (1911-2010): retrospective of works by this influential French-American artist and sculptor, to Feb. 7.

Project 35: The Last Act: This five-year project by Independent Curators International features 70 video works from artists living and working all over the world, to Jan. 31. Located at 9 Krymsky Val, in Gorky Park, near Pionersky Prud. M. Oktyabrskaya. Noon to 8:30 p.m. 495-645-0520, garageccc.com

Center for Oceanography and Marine Biology:

Mosquarium: Entertainment and educational programs include aquariums and live shows. Aquarium open 10 a.m. to 9 p.m., shows Thurs. to Sat. at 7 p.m., Sun. at 3 p.m. Located at 119 Prospekt Mira on the VDNKh territory, Bldg. 23. M. VDNKH. 499-677-7777, www.moskvarium.ru

Central House of Artists:

MT PICK Elliott Erwitt: retrospective of works from 1946 to 2001 by this American advertising and documentary photographer, to Dec. 10. Located at 10 Krymsky Val. M. Park Kultury, Oktyabrskaya. Ticket office open 11 a.m. to 7 p.m., closed Mon. 499-238-9634/9843, www.cha.ru

Christ the Savior Cathedral Museum:

History of the Christ the Savior Cathedral: permanent display. Located at 15 Ul. Volkhonka. M. Kropotkinskaya. 10 a.m. to 6 p.m., closed the last Monday of the month. 495-637-1276, 495-924-8058/8490, www.xxc.ru/complex/museum/index.htm,

www.xxc.ru/english/index.htm

Fine Art:

NEW The Arctic: new paintings by Pavel Polyansky, Mon. to Jan. 9. Located at 3 Bolshaya Sadovaya Ul., Bldg. 10, in the yard of the Pekin restaurant. M. Mayakovskaya. 11 a.m. to 6 p.m., Sat. noon to 6 p.m., closed Sun. 499-251-7649, www.galleryfineart.ru

Gromova Gallery:

NEW Andrei Ostashov shows sculptures, to Feb. 27. Located at 23 Savvinskaya Naberezhnaya. M. Sportivnaya. Noon to 8 p.m. 495-642-7236, 507-1071, www.elenagromova.com

Historical Museum:

The Bronze Age (Epokha Bronzy): permanent display.

The History of Russia From Ancient Times to the Early 20th Century (Istoriya Rossii s Drevneishikh Vremyon do Nachala 20 Veka): permanent display.

The Patriotic War of 1812 (Otechestvennaya Voina 1812 Goda): an addition to the permanent display.

Historical Museum affiliate:

The Romanov Chambers in Zaryadye: authentic interiors of a 17th-century Russia boyar home, permanent display. Located at 1/2 Red Square. M. Ploshchad Revolyutsii. Ticket office open 10 a.m. to 5:30 p.m., Thurs. 11 a.m. to 8 p.m., closed Tues. 495-692-4019, www.shm.ru

In Artibus:

MT PICK Inspired by Rome (Vdokhnovlyonniye Rimom): paintings and drawings by European Baroque artists Salvator Rosa and Gaspard Dughet from Russian museum and private collections, to Feb. 28. Located at 17 Prechistenskaya Naberezhnaya, entrance from Kursovoi Pereulok. M. Kropotkinskaya. 11 a.m. to 8 p.m., Sat and Sun. 11 a.m. to 7 p.m., closed Mon. 495-640-0249, www.inartibus.org

Jewish Museum & Tolerance Center:

MT PICK Anish Kapoor. My Red Homeland: sculptural works by this acclaimed British-Indian artist, to Jan. 17.

History of the Jews: This multimedia interactive exposition focuses on key historical periods and begins at the Beginning Theater with a 4D film based on the Torah, permanent display. Located at 11 Ul. Obratsova, Bldg. 1A. M. Savyolovskaya, then two stops by bus 12 to Ulitsa Obratsova. Sun. to Thurs. noon to 10 p.m., Fri. 10 a.m. to 3 p.m. closed Sat. and Jewish holidays. 495-645-0550, www.jewish-museum.ru

Kolomenskoye Estate Museum:

Russian Tsarist Estate: built between the 15th and 17th centuries, situated on a high bank

of the Moscow River and now an architectural museum.

Stable Yard (Konyushenny Dvor): This exhibition complex includes stables with Orlov and Russian trotters, a coach house with carriages and sledges, a smithy and a hayloft.

Tsar's Feast at Kolomenskoye (Tsarsky Pir v Kolomenskom): multimedia reconstruction of feasts put on by Tsar Alexei Mikhailovich in the 17th century, permanent show at Dvorets Aleksey Mikhailovicha. Located at 39 Prospekt Andropova. M. Kolomenskaya, Kashirskaya. 10 a.m. to 6 p.m., closed Mon. 499-782-8917/21, mgomz.ru/kolomenskoe

Kovcheg Gallery:

NEW December Nights (Dekabrskiy Vecher): drawings made by Viktor Duvidov, Nikita Rodionov, Alexander Livanov, Vladimir Ilyushchenko during concerts of the Svyatoslav Richter December Nights at the Pushkin Museum of Fine Arts in the 1980s, Fri. to Jan. 10. Located at 12 Ul. Nemchinova. M. Timiryazevskaya, then bus 87 or 206 to Gostinitsa Molodyozhnaya. Ticket office open 11 a.m. to 7:30 p.m., closed Mon. 499-977-0044/88, www.kovcheg-art.ru

Kuzminki Estate Museum:

Museum of Russian Estate Culture (Muzei Russkoi Usadebnoi Kultury): permanent display. Located in the Kuzminki Park at 6 Topolyovaya Alleya. M. Ryazansky Prospekt, then bus 29. Ticket office open 10 a.m. to 5:30 p.m., closed Mon. and the last Fri. of the month. 495-377-9457, 376-7610, www.kuzminky.ru

Lyublino Estate Museum:

Durasov Palace: perfectly preserved, early 19th-century manor that belonged to Moscow landowner Nikolai Durasov, permanent display.

Palace and Park Ensemble, built by Moscow landowner Nikolai Durasov, represents the mode of life of the 19th-century Moscow nobility, permanent display. Located at 1 Letnyaya Ul. M. Volzhskaya. 10 a.m. to 6 p.m., closed Mon. 499-722-7189, mgomz.ru/lublino

M'ARS Center of Contemporary Art:

Oriental Express (Vostochny Express): new media art works by Russian and European artists, to Sun. Located at 5 Pushkaryov Pereulok. M. Tsvetnoi Bulvar, Sukharevskaya. Ticket office open noon to 8 p.m., closed Mon. 623-6690, centermars.com

Manezh Exhibition Hall:

Romantic Realism: Soviet paintings from 1925 to 1945, to Fri. Located at 1 Manezh Square. M. Okhotny Ryad, Alexandrovsky Sad. Noon to 10 p.m., closed Mon. 495-645-9277, moscowmanege.ru

Mikhail Glinka Museum of Musical Culture:

Permanent display of musical instruments. Located at 4 Ul. Fadeyeva. M. Mayakovskaya.

Ticket office open 11 a.m. to 6 p.m., closed Mon. and the last day of the month. 495-739-6226, www.glinka.museum

Moscow Kremlin:

The Diamond Fund (Almazny Fond): items from the State Fund collection, permanent display. Located at the Moscow Kremlin. Borovitsky Gate entrance. M. Borovitskaya. 10 a.m. to 5 p.m., closed Thurs. 495-699-2036, gokhran.ru/ru/exhibition

Moscow Kremlin Museums:

The Armory Chamber (Oruzheinaya Palata), the Patriarchy Palace (Patriarshiye Palaty), the Ivan the Great Belfry (Kolokolnya Ivana Velikogo), the Assumption Cathedral (Uspensky Sobor), the Archangel Cathedral (Arkhangelsky Sobor) and other cathedrals, permanent display. Located at the Moscow Kremlin. Borovitsky Gate entrance. M. Borovitskaya. 10 a.m. to 5 p.m., closed Thurs. 495-695-4146, www.kreml.ru/en

Moscow Museum of Modern Art on Gogolevsky:

Birds and Numbers (Ptitsy i Tsifry): graphics, videos, objects, sculptures and installations dedicated to Russian futurist poet Velimir Khlebnikov (1885-1922), to Jan. 17.

Out of Range (Vne Zony Deistviya): Crocodile POWER art group of young artists shows paintings and sculptures, to Dec. 13. Located at 10 Gogolevsky Bulvar. Metro Kropotkinskaya. Noon to 8 p.m., ticket office to 7:15 p.m., Thurs. 1 to 9 p.m., ticket office to 8:15 p.m., closed every third Monday of the month. 495-231-3660, www.mmoma.ru

Moscow Museum of Modern Art on Tverskoi:

Jiri David. Prequel retrospective of paintings, photographs, videos, installations and objects by this acclaimed Czech artist, to Sun. Located at 9 Tverskoi Bulvar. M. Tverskaya. Noon to 8 p.m., ticket office to 7:15 p.m., Thurs. 1 to 9 p.m., ticket office to 8:15 p.m., closed every third Monday of the month. 495-231-3660, www.mmoma.ru

Moscow Museum of Modern Art on Yermolayevsky:

Dmitry Semakov: retrospective of architectural paintings, to Sun. Located at 17 Yermolayevsky Pereulok. M. Mayakovskaya. Noon to 8 p.m., ticket office to 7:15 p.m., Thurs. 1 to 9 p.m., ticket office to 8:15 p.m., closed every third Monday of the month. 495-231-3660, www.mmoma.ru

Moscow Planetarium:

Permanent shows: interactive museum with the Lunarium, Big and Small Star Halls, the Urania Museum and 4D Cinema Theater. Located at 5 Sadovaya-Kudrinskaya Ul. M. Barrikadnaya. 9 a.m. to 9 p.m., weekends and holidays 10 a.m. to 10 p.m., closed Tues. 495-221-7690, www.planetarium-moscow.ru

Multimedia Art Museum:

Andrei Baskakov: photographs from the 1970s–80s, to Sun.

Pascal Colrat. Six Months of Daydreams: a graphic series by this French artist, to Sun. Located at 16 Ul. Ostozhenka. M. Kropotkinskaya. Ticket office open noon to 9 p.m., closed Mon. 495-637-1100, www.mamm-mdf.ru/en

Museum of Applied, Decorative and Folk Art:

MT PICK Clothes Made of Rainbow and Silver (Odezhdy iz Radugi i Serebra): collection of clothes and silver decorations from the Guizhou Province Museum (China), to Jan. 10.

Masterpieces of Soviet Porcelain from the 1920s to the 1970s, permanent display.

Olga Zateyeva's Collection of Fans from the 18th to the 20th century, to Dec. 13.

Russian Bone Carving Art (Kostoreznoye Iskusstvo Rossii) from the late 17th to the early 21st century, to Jan. 31.

Russian Bone Carving Art (Kostoreznoye Iskusstvo Rossii) from the late 17th to the early 21st century, to Jan. 31.

Russian Folk Art From the 18th to the 20th Century: permanent display.

Russian Lacquer Miniatures by masters of Palekh, Fedoskino, Kholui and Mstyora, permanent display.

Wings of Eurasia (Krylya Yevrazii): works by acclaimed Russian artists, to Jan. 17. Located at 3 Delegatskaya Ul. M. Tsvetnoi Bulvar. Ticket office open 11 a.m. to 5 p.m., closed Tues. and the last Mon. of the month. 495-609-0146, Thurs. 10 a.m. to 8 p.m., www.vmdpni.ru

Museum of Moscow:

SMIT: 60 Minutes in Tomorrow: hi-tech interactive show, to Jan. 10. Official site smit.space

The History of Moscow from old times to the present, permanent display. Located at 2 Zubovsky Bulvar, entrance from Ostozhenka. M. Park Kultury. Ticket office open Tues., Wed., Fri. 10 a.m. to 5:30 p.m., Sat., Sun. 11 a.m. to 5:30 p.m., closed Mon. and the last Friday of the month. 499-766-4196, www.mosmuseum.ru

Museum of Private Collections:

Permanent display in 23 halls includes 1,500 works of art. Located at 10 Ul. Volkhonka. M. Kropotkinskaya. 11 a.m. to 7 p.m., Thurs. 11 a.m. to 9 p.m., closed Mon. and Tues. 495-697-1610, www.arts-museum.ru

Museum of Russian Icons:

Permanent display: East European Christian art from the 6th to the 20th century. Located at 3 Goncharnaya Naberezhnaya, entrance from Bolshoi Vatin Pereulok. M. Taganskaya. 11 a.m. to 7 p.m., closed Wed. 495-221-5283, www.russikona.ru

Museum of the Contemporary History of Russia:

From the English Club to the Museum of the Contemporary History of Russia: permanent display.

State Symbols of Russia. History and the Present Day (Gosudarstvennaya Simvolika Rossii. Istoriya i Sovremennost): permanent display. Located at 21 Tverskaya Ul., M. Tverskaya. Ticket office open Tues., Wed. and Fri. 10 a.m. to 5:30 p.m., Thurs. and Sat. 11 a.m. to 6:30 p.m., Sun. 10 a.m. to 4:30 p.m., closed Mon. 495-699-5458, www.sovr.ru

Nashi Khudozhniki Gallery:

MT PICK Shuster. Collection: paintings by Pyotr Konchalovsky, Ilya Mashkov, Natan Altman, Boris Grigoryev, Pavel Kuznetsov and other Russian modernist artists from the collection of Solomon Shuster, to Dec. 20. Located at 2 Sechenovsky Pereulok. M. Molodyozhnaya. 11 a.m. to 8 p.m., closed Mon. 495-637-2810/52, www.kournikovagallery.ru

New Tretyakov Gallery:

Alexander Rodchenko. Workers Club: (1885-1953): The reconstructed interior of a club for workers designed by this constructivist artist, permanent display.

Main exhibit halls: a display of 20th-century Russian art.

Metageography an interdisciplinary project, featuring artifacts and works of art, to Feb. 7.

MT PICK Under the Sign of Malevich: graphics by Kazimir Malevich and by artists of his circle from the gallery collection, to Feb. 14.

MT PICK Valentin Serov (1865-1911): paintings and graphics, to Jan. 17. Located at 10 Krymsky Val. M. Oktyabrskaya, Park Kultury. Ticket office open 10 a.m. to 6:30 p.m., closed Mon. 499-230-7788, 238-1378, 495-951-1362. Excursions 495-953-5223. An Autoline minibus runs from outside the New Tretyakov Gallery to the Tretyakov Gallery at 10/12 Lavrushinsky Pereulok daily at 12:20, 1:20, 2:20, 3:20 and 4:20 p.m., www.tretyakovgallery.ru

New Western Art Gallery:

European and American Art from the 19th and 20th centuries. Located at 14 Volkhonka. M. Kropotkinskaya. 10 a.m. to 7 p.m., Thurs. 10 a.m. to 9 p.m., closed Mon. 495-697-1546, www.arts-museum.ru, www.newpaintart.ru

Oriental Art Museum:

Extra Storeroom (Osobaya Kladovaya): North Caucasian archeological findings from the 5th century BC to the 14th century AD, permanent display. Reservations required.

Permanent Displays: the art of Korea, India, Iran, China, Asia, Siberia and other locations, permanent display.

Ship of the Desert (Korabl Pustyni): Central Asian and South Caucasian art from the 19th and the 20th century, to Jan. 17. Located at 12 Nikitsky Bulvar. M. Arbatskaya. Ticket office

open 11 a.m. to 7:30 p.m., Thurs. noon to 8:30 p.m., closed Mon. 495-691-9614/0212, www.orientmuseum.ru

Pushkin Museum of Fine Arts:

Dmitry Plavinsky's *The Book of Herbs*: a series of graphic works by this nonconformist artist (1937-2012), to Dec. 13.

Permanent collection: works from ancient Egypt, Assyria, Greece and Rome, plus works from the Middle Ages to the early 20th century.

Timeless Themes of Art (Vechniye Temy Iskusstva): paintings, graphics and sculptures from major Russian museums, to Jan. 31. Located at 12 Volkhonka. M. Kropotkinskaya. 10 a.m. to 7 p.m., Thurs. to 9 p.m., closed Mon. 495-697-9578, www.arts-museum.ru

Roza Azora Gallery:

NEW Anton Totibadze shows new paintings, to Sun. Located at 14 Nikitsky Bulvar. Mon. to Sat. noon to 8 p.m., Sun. noon to 6 p.m. 495-695-8119, www.rozaazora.ru

RuArts Gallery:

NEW I Take Pictures, Photographic Pictures: works by Moscow photographer Vasily Kudryavtsev, Tues. to Jan. 31.

Unforeseen Circumstances (Nepredvidenniye Obstoyatelstva): works by once street artists Aske, Luka (Moscow), Sat One (Munich) and Finsta (Stockholm), to Sat. Located at 10 1st Zachatyevsky Pereulok. M. Kropotkinskaya. Noon to 8 p.m. Free admission. 495-637-4475, www.ruarts.ru

Solyanka VPA:

PYRFYR: live performances by German artists Yingmei Duan, Verena Stenke and Julius von Bismarck, to Dec. 13, Fri. to Sun. in the underground halls. Located at 1/2 Solyanka. M. Kitai-Gorod. Tues. to Thurs. 2 to 10 p.m., Fri. noon to midnight, Sat. and Sun. noon to 10 p.m. 495-621-5672, solyanka.org

St. Basil's Cathedral:

Sacred Relics of the Pokrovsky Cathedral (Svyatyni Pokrovskogo Sobora): stunning medieval interior, icons, books and other religious relics. Located at 2 Red Square. M. Ploshchad Revolyutsii. Ticket office open in summer, 11 a.m. to 5:30 p.m., in winter 11 a.m. to 4:30 p.m., 495-698-3304 www.saintbasil.ru

State Center of Contemporary Art:

NEW Elective Affinities (Izbiratelnoye Srodstvo): This exhibit of works by Alexandre Joly (Switzerland), Christiane Loehr (Germany), Elisabetta Di Maggio (Italy), Vadim Fishkin, Almagul Menibayeva (Kazakhstan), Katie Holten (Ireland) and Atilla Csorgo (Hungary) is the first part of *The Human Condition* project, to Jan. 31. Located at 13 Zoologicheskaya Ul. M.

Krasnopresnenskaya. Noon to 8 p.m., Thurs. noon to 9 p.m., closed Mon.
499-254-8492/0674, www.ncca.ru

State Literary Museum:

Permanent display: books, manuscripts and other items that tell the stories of Russia's great writers. Located at 28 Ul. Petrovka. M. Chekhovskaya. 11 a.m. to 6 p.m., Thurs. 2 to 8 p.m., closed Mon. 495-625-1226, www.goslitmuz.ru/ru/gos-lit-museum

Tretyakov Gallery:

MT PICK Day Dreams (Sny Nayavu): retrospective of paintings by Russian symbolist painter, graphic artist and stage designer Pavel Kuznetsov (1878-1968), to Dec. 13.

Icons From the 16th to the 19th Century from the gallery collection, to Jan. 10.

Main exhibit halls: masterpieces of Russian icon art and world-famous 19th- and early 20th-century paintings.

Sergei Konyonkov: sculptures from the gallery collection, to Jan. 17.

Woodcuts From the Tretyakov Gallery Collection, to May 15. Located at 10/12 Lavrushinsky Pereulok. M. Tretyakovskaya. Ticket office open Tues., Wed., Sat. and Sun. 10 a.m. to 5 p.m., Thurs. and Fri. 10 a.m. to 8 p.m., closed Mon. 499-230-7788, 238-1378, 495-951-1362.

An Autoline minibus runs from outside the Tretyakov Gallery to the New Tretyakov Gallery at 10 Krymsky Val daily at noon, 1, 2, 3, 4 and 5 p.m., www.tretyakovgallery.ru

Tsaritsyno Museum:

Catherine the Great: (Velikaya Yekaterina): an exhibit dedicated to the Russian empress, permanent display.

Masterpieces of the Tsaritsyno Art Collection (Shedevry Khudozhestvennogo Sobraniya Tsaritsyno): West European tapestry from the 16th to the 18th century, and 20th-century Russian glass and tapestry, permanent display.

Reverse Point Asia: works by contemporary Chinese, South Korean, Japanese and Russian artists, to Jan. 31.

The Past and Present of Tsaritsyno (Byl i Nov Tsaritsina): the history of Tsaritsyno, permanent display.

The Silver Storeroom (Serebryanaya Kladovaya): works of Russian jewelry from the 16th to the 20th century, permanent display.

Tsaritsyno Antiquities (Tsaritsynskiye Drevnosti): archeological findings, permanent display. Located at 1 Dolskaya Ul. M. Tsaritsyno, Orekhovo. Ticket office open 11 a.m. to 5:30 p.m., Sat. 11 a.m. to 7:30 p.m., Sun. and holidays 11 a.m. to 6:30 p.m., closed Mon. Park open daily 6 a.m. to midnight. 499-725-7287, www.tsaritsyno-museum.ru

VDNKh:

All-Russian Exhibition Center offers various trade, cultural and art shows and fairs. Located near M. VDNKh. Gates open round-the-clock. 495-544-3400, www.vdnh.ru

Vladimir Vernadsky Geological Museum:

Permanent displays: Planet Earth, the History of Earth, the World of Minerals, Geological Curiosities and other displays. Located at 11 Mokhovaya Ul., Bldg. 2. M. Okhotny Ryad. Ticket office open Tues. to Fri. 11 a.m. to 6 p.m., Sat. and Sun. noon to 6 p.m., closed Mon. 495-692-0943, www.sgm.ru

Yekaterina Cultural Foundation:

Insight: scenes from Russian Art Life, 1986-92, to Dec. 13.

Suspense: works by young artists Viktoria Malkova and Polina Moskvina, to Dec. 13. Located at 21 Kuznetsky Most, entrance No. 8 from Ul. Bolshaya Lubyanka. M. Kuznetsky Most. Ticket office open 11 a.m. to 7:30 p.m., closed Mon. 495-621-5522, www.ekaterina-fondation.ru

Zurab Tsereteli Arts Gallery:

Around the Square (Vokrug Kvadrata): works inspired by Kazimir Malevich, to Dec. 17. Located at 19 Prechistenka. M. Kropotkinskaya. Noon to 8 p.m., Sun. noon to 7 p.m., closed Mon. 495-637-2569/4771, www.tsereteli.ru, www.rah.ru

Smaller Museums and Galleries

11.12 Gallery at Winzavod Center of Contemporary Art:

Full Beam Headlights (Dalny Svet): Alexei Alpatov explores the mystic effect of full beam, to Sun. Located at 14th Syromyatnichesky Pereulok, Bldg. 6. M. Chkalovskaya, Kurskaya. Noon to 8 p.m., closed Mon. 495-940-6471, www.11-12.ru

Alexander Goldenweiser Apartment Museum:

Memorial Apartment of this distinguished Russian pianist and composer, permanent display. Located at 17 Tverskaya Ul., apt. 110. M. Tverskaya. Open Wed. noon to 4 p.m. Excursions by appointment. 495-629-2929, www.glinka.museum/about/apartment_museum_goldenweiser/

Alexander Herzen House Museum:

Small Mansion where the Russian civic philosopher Alexander Herzen (1812-70), best known for his autobiographical book "My Past and Thoughts" and social novel "Who Is to Blame?" lived before leaving Russia. Located at 27 Sivtsev Vrazhek. M. Kropotkinskaya, Smolenskaya. Ticket office open 11 a.m. to 5:30 p.m., Thurs. 2 to 7:30 p.m., closed Mon. and the last day of the month. 499-241-5859, www.goslitmuz.ru/ru/herzen-museum

Alexander Ostrovsky House Museum:

Permanent display, about the life and work of this 19th-century Russian playwright who almost single-handedly created a Russian national repertoire. Located at 9 Malaya Ordynka,

Bldg. 1. M. Polyanka, Tretyakovskaya. Ticket office open noon to 6:30 p.m., Thurs. 1 to 8:30 p.m., closed Mon., Tues. and the last Fri. of the month. 495-953-8684, www.bakhrushin.theatre.ru/branches/dmo

Alexander Pushkin Apartment Museum and Exhibition Hall:

Pushkin and Moscow: permanent display. Located at 55/32 Arbat, entrance from Denezhny Pereulok. M. Smolenskaya. Ticket office open 10 a.m. to 5:30 p.m., Thurs. noon to 8:30 p.m., closed Mon., Tues. and the last Friday of the month. 499-241-9295, www.pushkinmuseum.ru

Alexander Scriabin Memorial Museum:

Permanent display: the house furnished as it was when the composer lived here from 1912 to 1915, including the library, paintings and pianos. Located at 11 Bolshoi Nikolopeskovsky Pereulok. M. Smolenskaya, Arbatskaya. Wed., Fri., Sat. and Sun. 11 a.m. to 6 p.m., Thurs. 1 to 9 p.m., closed Mon., Tues. and the last Friday of the month. 499-241-1901, www.anscriabin.ru

Anatoly Lunacharsky Memorial Study:

Permanent display: an exhibit devoted to Anatoly Lunacharsky (1875-1933) — Russian writer, translator, essayist, art critic, politician and the first Soviet Commissar of Enlightenment responsible for culture and education. Located at 9/5 Denezhny Pereulok, Apt. 1. M. Smolenskaya. By appointment 499-241-8873, www.goslitmuz.ru/ru/lunacharsky-museum

Andrei Bely Apartment Museum:

Permanent display: personal belongings, portraits and rare archive materials of this acclaimed Silver Age poet and novelist. Located at 55 Arbat. M. Smolenskaya. Ticket office open 10 a.m. to 5:30 p.m., Thurs. noon to 8:30 p.m., closed Mon., Tues. and the last Friday of the month. 499-241-9295, www.pushkinmuseum.ru, kvartira-belogo.guru.ru

Andrei Sakharov Museum and Public Center:

Permanent display devoted to the legacy of this human rights activist and physicist chronicles the political repression of Soviet citizens from 1917 to the 1980s with photographs and documentary materials. Located at 57 Zemlyanoi Val, Bldg. 6. M. Kurskaya. Ticket office open 11 a.m. to 7 p.m., closed Mon. 495-623-4401/4420, www.sakharov-center.ru

Anna Golubkina Studio Museum:

Collection of Sculptures by this prominent master of the Silver Age art culture, a student of Rodin, permanent display. Located at 12 Bolshoi Lyovshinsky Pereulok. M. Park Kultury, Smolenskaya. Wed., Thurs. and Fri. noon to 6 p.m., Sat. and Sun. 10 a.m. to 4 p.m., closed Mon. and the last Friday of the month. 495-637-2564/5682, www.tretykovgallery.ru/ru/museum/branch/museum_studio_golubkina

Anton Chekhov House Museum:

Permanent display: the writer's Moscow apartment, with a small display of photos and manuscripts. Located at 6 Sadovaya-Kudrinskaya Ul. M. Barrikadnaya. Tues., Thurs., Sat.

11 a.m. to 6 p.m., Wed., Fri. 2 to 8 p.m., closed Mon. and the last day of the month.
495-691-6154/3837, www.goslitmuz.ru/ru/chekhov-museum

Anton Chekhov Memorial Museum at Melikhovo:

Permanent display: the house furnished more or less as it was when the writer lived there from 1892 to 1899 and wrote the famous play "The Seagull." Located in Melikhovo, from Kursky Station to Chekhov, then bus 25. 10 a.m. to 5 p.m., closed Mon. and the last Friday of the month. 499-270-7991, www.chekhov-melikhovo.com

Art Deco Museum:

Mkrtich Okroyan's Collection of Art Deco sculptures, furniture and decorative art, permanent display. Located at 2/4 Luzhnetskaya Naberezhnaya, Bldg. 4. M. Vorobyovy Gory. Tues. to Sat. 11 a.m. to 9 p.m., closed Mon. and Sun. 495-639-9484, www.artdecomuseum.ru

Art4.ru:

Contemporary Russian Art collected by Igor Markin and housed in a private museum. Located at 4 Khlynovsky Tupik. M. Tverskaya. By appointment 499-136-5656, art4.ru

Boris Pasternak Museum:

Permanent Display: The famous dacha home where the author of "Dr. Zhivago" weathered attacks after being awarded the 1958 Nobel Prize for Literature. Located in Peredelkino, 3 Ul. Pavlenko. From Kievsky Station to Peredelkino. Ticket office open 11 a.m. to 5:30 p.m., Thurs. 1 to 7:30 p.m., closed Mon. and the last day of the month. 495-934-5175, www.pasternakmuseum.ru/index_angl.html

Bulgakov House:

Odd Flat: The communal apartment, in which Mikhail Bulgakov lived from 1921 to 1924, and which became the prototype of the "Odd Flat" where Woland resided with his court. Displays, performances, exhibits and excursions highlighting the life and work of Mikhail Bulgakov and his novel "The Master and Margarita." Located at 10 Bolshaya Sadovaya Ul. through the arch, Apt. 50. M. Mayakovskaya. 1 to 11 p.m., Fri. and Sat. 1 p.m. to 1 a.m. Free admission. 495-970-01619, www.dombulgakova.ru

Darwin Museum:

Pass the Path of Evolution: a new interactive multimedia exhibition, permanent display.

Permanent displays: Macroevolution, Microevolution, Zoogeography, The Diversity of Life on Earth, Live Exhibition and others. Located at 57 Ul. Vavilova. M. Akademicheskaya. Ticket office open 10 a.m. to 6 p.m., Thurs. 1 to 9 p.m. closed Mon. and the last Fri. of the month. 499-134-6124, 783-2253, www.darwin.museum.ru/eng

Dom Ikony Na Spiridonovke:

Icons and other works of Christian art from a private collection, permanent display. Located

at 4 Ul. Spiridonovka. M. Arbatskaya, Tverskaya. Noon to 10 p.m. 495-690-5474,
www.dom-ikony.ru

English Courtyard Museum:

Russian-English Trade Relations (Russko-Angliiskiy Torgoviy Otnosheniya): This building, the cultural and commercial center of the English community in Moscow in the 16th and 17th centuries, reflects the development of Russian-English relations through the centuries, permanent display. Located at 4A Ul Varvarka. M. Kitai-Gorod. Ticket office open 10 a.m. to 5:30 p.m., Thurs. 1 to 8:30 p.m., closed Mon. and the last Friday of the month. 495-698-3952, www.mosmuseum.ru/museum-menu-english-dvor.html

Fyodor Chaliapin House Museum:

Permanent display: a small exhibit devoted to the great Russian bass. Located at 25 Novinsky Bulvar. M. Barrikadnaya. Ticket office open Tues. and Sat. 10 a.m. to 5 p.m., Wed. and Thurs. 11:30 a.m. to 6 p.m., Sun. 10 a.m. to 3:30 p.m., closed Mon., Fri. and the last day of the month. 495-605-6236, 252-2530, www.shalyapin-museum.org

Fyodor Dostoevsky Apartment Museum:

Permanent display: a small exhibit devoted to the author of "Crime and Punishment" and "The Brothers Karamazov" in the house where he lived as a child. Located at 2 Ul. Dostoyevskogo. M. Novoslobodskaya. Ticket office open 11 a.m. to 5:30 p.m., Wed. and Thurs. 1 to 7:30 p.m., closed Mon. and the last day of the month. 495-681-1085, www.goslitmuz.ru/ru/dostoyevsky-museum

Gogol House:

Memorial Museum and Scholarly Library in this Moscow estate house where Nikolai Gogol spent his four last years. Located at 7A Nikitsky Bulvar. M. Arbatskaya. Mon., Wed., Fri. noon to 7 p.m., Thurs. 2 to 9 p.m., Sat. and Sun. noon to 5 p.m., closed Tues. and the last day of the month. 495-9256, www.domgogolya.ru

International Roerich Center:

Nikolai Roerich Museum: a collection of works by the great painter and philosopher known best for his landscapes of India, permanent display. Located at 3/5 Maly Znamensky Pereulok. M. Kropotkinskaya. Ticket office open 11 a.m. to 6 p.m., closed Mon. 499-271-3417/20, www.icr.su

Ivan Turgenev Museum:

Moscow. Ostozhenka. Turgenev: permanent display about the life and work of this beloved novelist, playwright and poet. 37 Ul. Ostozhenka. M. Park Kultury. Ticket office open 10 a.m. to 5:30 p.m., Thurs. noon to 8:30 p.m., closed Mon., Tues. and the last Friday of the month. 495-695-1078, www.pushkinmuseum.ru

Konstantin Stanislavsky Museum:

Permanent display: the home that was occupied by the co-founder of the Moscow Art Theater and the creator of the famous acting system. Located at 6 Leontyevsky Pereulok. M. Tverskaya. 11 a.m. to 6 p.m., Thurs. 11 a.m. to 9 p.m., closed Mon. and Tues. 495-629-2855, www.mxat.ru/museum

Kornei Chukovsky House Museum:

Permanent display: The famous dacha of Russia's most popular children's poet and an influential literary critic and essayist. Located in Peredelkino, 3 Ul. Serafimovicha. From Kievsky Station to Peredelkino. Ticket office open 11 a.m. to 5:30 p.m., Thurs. 1 to 7:30 p.m., closed Mon. and the last day of the month. 495-593-2670, goslitmuz.ru/ru/chukovsky-museum

Krokin Gallery:

Vladimir Nasedkin shows the Russian Fortress series of objects and drawings, to Dec. 13. Located at 9 Klimentovskiy Pereulok. M. Tretyakovskaya, Novokuznetskaya. By appointment. 8-964-564-0303, www.krokingallery.com

Lefortovo Museum:

Lefortovo. Landmarks of History (Lefortovo. Vekhi Istorii): the history of this Moscow district named after a close associate of Tsar Peter the Great, Franz Lefort, whose troops were stationed nearby in the German Quarter, permanent display. Located at 23 Kryukovskaya Ul. M. Semyonovskaya, Aviamotornaya. Ticket office open 10 a.m. to 5:30 p.m., closed Mon. and the last Fri. of the month. 495-360-0147, www.mosmuseum.ru/museum-menu-lefortovo.html

Leo Tolstoy Museum:

Permanent display: This museum dedicated to the author of "War and Peace" and "Anna Karenina" has three branches. Branch at 12 Pyatnitskaya Ul. M. Novokuznetskaya. 495-951-5808. Ticket offices open 11 a.m. to 5:30 p.m., Thurs. noon to 7:30 p.m., closed Mon. and the last Friday of the month. tolstoymuseum.ru

Lopasnya-Zachatyevskoye Estate Museum:

Permanent display: park with seven ponds and a main building, known first as the Goncharov House and later as the Pushkin Nest. The exhibit illuminates ties among the estate-owning family the Vasilchikovs and the Pushkins, Lanskies and Goncharovs. Located in Chekhov, 10 Ul. Pushkina. M. Yuznaya, then bus 365 to Skver Imeni Chekhova. 10 a.m. to 5 p.m., closed Mon. and the last Friday of the month. 496-723-0389, www.chekhov-melikhovo.com/index.php/en/museum-melikhovo/lopasnya

Maria Yermolova Museum:

Permanent display: a small but elegant apartment museum dedicated to the great Maly Theater actress of the end of the 19th century. Located at 11 Tverskoi Bulvar. M. Tverskaya. Noon to 7 p.m., Thurs. 1 to 9 p.m. closed Tues. and the last Fri. the month. 495-690-5416/4901, www.bakhrushin.theatre.ru/branches/dme

Marina Tsvetayeva Museum:

Permanent display: house museum where the poet lived from 1914 to 1922. Located at 6 Borisoglebsky Pereulok. M. Arbatskaya, Smolenskaya. Noon to 5:30 p.m., Thurs. noon to 8:30 p.m., closed Mon. and the last Friday of the month. 495-697-5369, www.dommuseum.ru

Mikhail Prishvin House Museum:

Summer Estate of Russian writer Mikhail Prishvin (1873-1954). Located at 2 Dunino Village. M. Molodyozhnaya, then bus 121 to Lesniye Dali, ticket office open 11 a.m. to 5:30 p.m., Thurs. 1 to 6:30 p.m., closed Mon. 499-553-8132, www.prishvin.ru

Mikhail Shchepkin House Museum:

Permanent display, about the life and work of this 19th-century Russian actor. Located at 47 Ul. Shchepkina, Bldg. 2. M. Prospekt Mira. Ticket office open Wed., Fri., Sat., Sun. noon to 7 p.m., Thurs. 1 to 6:30 p.m., closed Mon., Tues. and the last Fri. of the month. 495-600-6149, bakhrushin.theatre.ru/branches/dmsch

Museum of Jewish History in Russia:

Permanent display: artifacts representing the history of Jews who lived under Russian rule after the three partitions of Poland. Located at 10 Petrovsko-Razumovskaya Alleya, Bldg.3. M. Dynamo. Mon. to Wed. and Fri. noon to 7 p.m., Thurs. noon to 9 p.m., Sun. noon to 5 p.m., closed Sat. Free admission. 495-656-4571, www.mievr.ru

Museum of Unique Dolls:

Permanent display of antique dolls. Located at 13 Ul. Pokrovka. M. Turgenevskaya, Kitai-Gorod, Chistiye Prudy. Fri., Sat. Sun. 10 a.m. to 6 p.m., Tues., Wed. Thurs. excursions at noon, 2 and 6 p.m., closed Mon. Free admission. 495-625-6405/7512, www.dollmuseum.ru

Nemirovich-Danchenko Apartment Museum:

Permanent display: the home that was occupied by Vladimir Nemirovich-Danchenko, stage director, playwright and co-founder of the Moscow Art Theater. Located at 5/7 Glinishchevsky Pereulok, entrance 5, apt. 52. M. Tverskaya. 11 a.m. to 5:30 p.m., closed Mon. and Tues. 495-650-5391, www.mxat.ru/museum

Nikolai Golovanov Apartment Museum:

Memorial Apartment of this distinguished conductor who was expelled from the Bolshoi Theater three times, in 1928, 1936 and 1953, permanent display. Located at 7 Bryusov Pereulok, apt. 10. M. Tverskaya, Pushkinskaya. Open Mon. and Wed. 2 to 5 p.m. 495-629-7083, www.glinka.museum/about/apartment_museum_golovanov

Novy Manezh:

Senyon Faibisovich. My Moscow: paintings, to Sun. Located at 3 Georgiyevsky Pereulok. M. Okhotny Ryad, Teatralnaya. Noon to 9 p.m., closed Mon. 495-645-9277, moscowmanege.ru

Sergei Kononkov Studio Museum:

Permanent display: works by this influential Russian and Soviet sculptor who spent more than 20 years in the United States and returned home in 1945 at the age of 71. Located at 17 Tverskaya Ul. M. Tverskaya, Pushkinskaya. Ticket office open 11 a.m. to 6:30 p.m., closed Mon., Tues. and the last Friday of the month. 495-629-6139, www.rah.ru/museums/muzey_masterskaya_s_t_konenkova.php

Sergei Prokofiev Museum:

Memorial Apartment where the composer lived from 1947 to 1953, permanent display. Located at 6 Kamergersky Pereulok. M. Teatralnaya, Okhotny Ryad. Wed. to Sun. 11 a.m. to 5 p.m., closed Mon. and Tues. 495-692-7959, www.glinka.museum/about/museum_of_prokofiev

Silver Age Museum:

Bryusov House: "Valery Bryusov Memorial Study" and "Pushkin and the Silver Age of Russian Literature," permanent displays. Located at 30 Prospekt Mira. M. Prospekt Mira (circle line). Ticket office open 11 a.m. to 5:30 p.m., Thurs. and Fri. 1 to 7:30 p.m., closed Mon. and the last day of the month. 495-680-8683, www.goslitmuz.ru/ru/bryusov-museum

Svyatoslav Richter Memorial Apartment:

Permanent display: the great pianist's apartment, with a display of photos and paintings, video and sound recordings. Located at 2/6 Bolshaya Bronnaya Ul., Apt. 59. M. Pushkinskaya. By appointment Tues., Thurs. and the third Saturday of the month noon to 2 p.m. 495-695-8346, 697-7205, www.sviatoslav-richter.ru

Tchaikovsky and Moscow Museum:

Memorial Apartment where the composer lived from September 1872 to November 1873, permanent display. Located at 46/54 Kudrinskaya Ploshchad. M. Barrikadnaya. 10 a.m. to 7 p.m., closed Mon. and Tues. 495-691-1514, www.glinka.museum/about/museum_of_moscow_tchaikovsky

The GULAG History Museum:

Permanent display: documents, letters, memoirs and personal belongings of GULAG prisoners. Located at 9 1st Samotyochny Pereulok, Bldg. 1. M. Dostoevskaya, Novoslobodskaya. Ticket office open 11 a.m. to 6 p.m., Thurs. noon to 9 p.m., closed Mon. and the last Friday of the week. 495-621-7310, www.gmig.ru

Theater Gallery Na Maloi Ordynke:

Vladimir Lyubarov shows new paintings from the Peremilovo Village series, to Dec. 11. Located at 9 Malaya Ordynka, Bldg. 1. M. Polyanka, Tretyakovskaya. Ticket office open noon to 6:30 p.m., Thurs. 1 to 8:30 p.m., closed Mon., Tues. and the last Fri. of the month. 495-953-1245, www.bakhrushin.theatre.ru/branches/mo

Triumph Gallery:

Habitat: Toronto and St. Petersburg in paintings and graphics by Dmitry Gretskey, to Sun.

The Mall: industrial landscapes in paintings and video works by Pavel Otdelnov, to Sun.

Located at 3/8 Ul. Ilyinka. M. Ploshchad Revolyutsii. 11 a.m. to 8 p.m. Free admission.

495-662-0893, triumph-gallery.com

Vadim Zadorozhny's Vehicles Museum:

Permanent displays: retro cars, motorcycles, weaponry and airplanes. Located at Posyolok Arkhangelskoye, 4th km of Ilyinskoe Shosse, Bldg. 8. M. Tushinskaya, bus 541, 549, 568, 151, 541, 549, 568. M. Strogino, shuttle Strogino-Zacharkovo to Lipovaya Alleya. By car Novorizhskoe Shosse, near Arkhangelskoye. Ticket office open Tues. to Fri. 10 a.m. to 6 p.m., Sat. and Sun. 10 a.m. to 7 p.m., closed Mon. 495-662-3818, www.tmmuseum.ru

Vasily Pushkin House Museum:

Small Mansion where this Russian neoclassical poet and an uncle of Alexander Pushkin lived from 1824 to 1830, permanent display. Located at 36 Staraya Basmannaya Ul. M. Krasniye Vorota. Ticket office open 10 a.m. to 5:30 p.m., Thurs. noon to 8:30 p.m., closed Mon. and the last Fri. of the month. 495-637-5674, www.pushkinmuseum.ru

Viktor Vasnetsov House Museum:

Teremok: This Russian-style house, where the painter lived from 1894 to 1926, was built to Vasnetsov's sketches and drawings, permanent display. Located at 13 Pereulok Vasnetsova. M. Prospekt Mira. 10 a.m. to 5 p.m., closed Mon., Tues. and the last Thursday of the month. 495-681-1329, www.tretyakovgallery.ru/ru/museum/branch/dmvasnetsov

Vsevolod Meyerhold Apartment Museum:

Permanent display: a small museum devoted to the director who, until his arrest and murder in prison in 1940, was one of the world leaders of the avant-garde. Located at 12 Bryusov Pereulok, Apt. 11. M. Pushkinskaya. Ticket office open noon to 5:30 p.m., closed Mon., Tues. and the last Friday of the month. 495-629-9437, www.bakhrushin.theatre.ru/branches/mkm

Watercolor and Fine Arts Academy:

Museum of Watercolors: permanent display. Located at 15 Ul. Akademika Vargi. M. Tyoply Stan, bus 144, 227, 281 to Ulitsa Akademika Vinogradova. 11 a.m. to 7 p.m., closed Mon. and Tues. 495-531-5555, ext. 298, www.academy.andriaka.ru

Zoological Museum of Moscow University:

Permanent displays: all groups of animals, from single-celled to birds and mammals, mostly moulages. Located at 6 Bolshaya Nikitskaya Ul. M. Okhotny Ryad. 10 a.m. to 5 p.m., closed Mon. and the last Tues. of the month. 495-629-4435, zmmu.msu.ru

Zurab Tsereteli Arts Gallery:

Yury Zlotnikov: retrospective of paintings and graphics, to Sun. Located at 19 Prechistenka. M. Kropotkinskaya. Noon to 8 p.m., Sun. noon to 7 p.m., closed Mon. 495-637-2569/4771, www.tsereteli.ru, www.rah.ru

Original url: <https://www.themoscowtimes.com/2015/12/02/exhibits-51046-a51046>