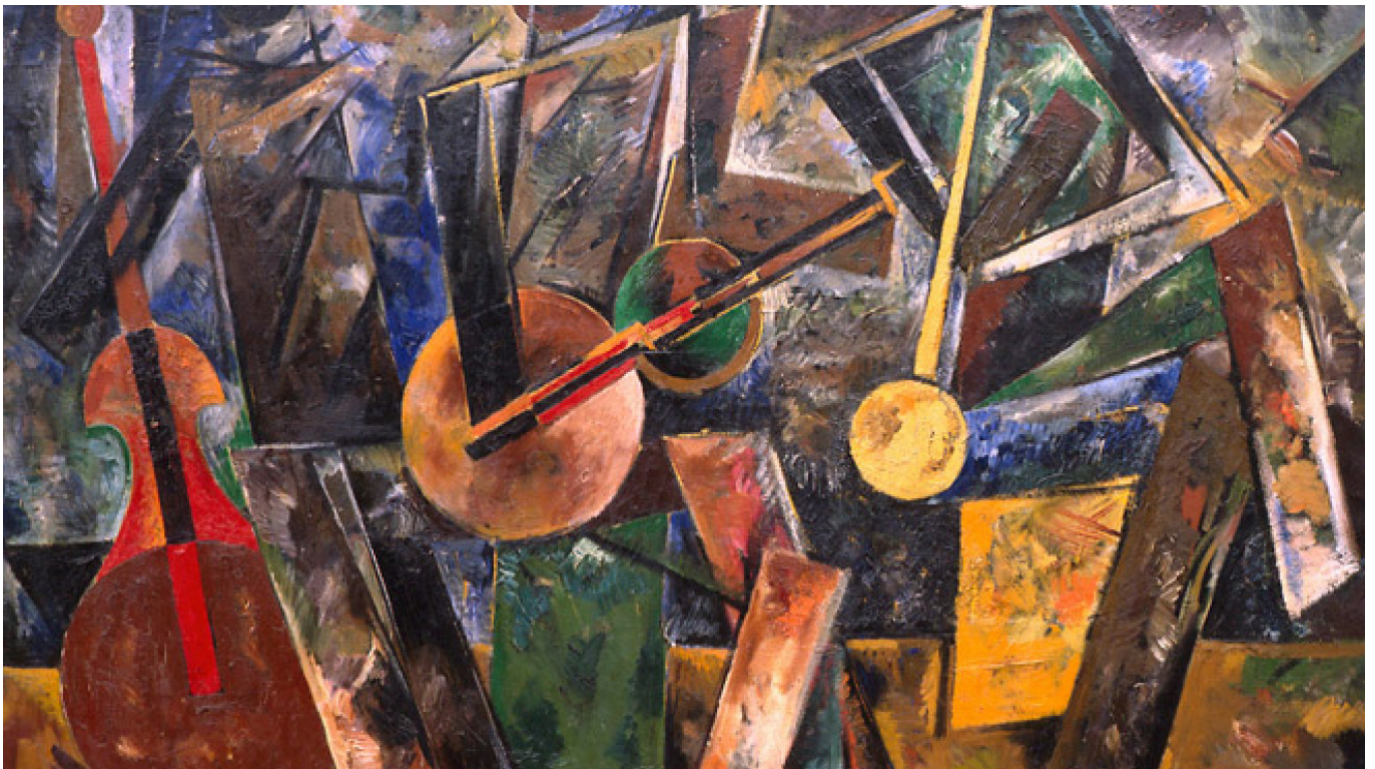


## Exhibits

By [The Moscow Times](#)

January 28, 2015



Visiting Rodchenko and Stepanova (V Gostyakh u Rodchenko i Stepanovoi): exhibit dedicated to artists Alexander Rodchenko and Varvara Stepanova — two leading masters of the early Russian avant-garde, to March 8.

### **11.12 Gallery at Winzavod Center of Contemporary Art:**

**NEW** Nine Pictures (Dvyat Kartin): C/A/C group of artists (Belarus) shows a series of works inspired by Greenaway, Bertolucci, Fincher and other filmmakers, to Feb. 20. Located at 14th Syromyatnichesky Pereulok, Bldg. 6. M. Chkalovskaya, Kurskaya. Noon to 8 p.m., closed Mon. 495-940-6471, [www.11-12.ru](http://www.11-12.ru)

### **Academy of Arts:**

Valery Maloletkov shows recent sculptural compositions and graphics, to Feb. 8. Located at 21 Prechistenka. M. Kropotkinskaya. Noon to 8 p.m., Sun. noon to 7 p.m., closed Mon. 495-637-4771, [www.rah.ru](http://www.rah.ru)

### **Alexander Fersman Mineralogical Museum:**

MT PICK Permanent display: a collection of minerals from all over the world. Located at 18 Leninsky Prospekt, Bldg. 2. M. Oktyabrskaya, Leninsky Prospekt, then any bus to Bolnitsa Svyatitelya Alexia. 11 a.m. to 4 p.m., closed Mon. and Tues. 495-954-3900, [www.fmm.ru](http://www.fmm.ru)

### **Alexander Goldenweiser Apartment Museum:**

Memorial Apartment of this distinguished Russian pianist and composer, permanent display. Located at 17 Tverskaya Ul., apt. 110. M. Tverskaya. Open Wed. noon to 4 p.m. Excursions by appointment. 495-629-2929, [www.glinka.museum/about/apartment\\_museum\\_goldenweiser/](http://www.glinka.museum/about/apartment_museum_goldenweiser/)

### **Alexander Herzen House Museum:**

Small Mansion where the Russian civic philosopher Alexander Herzen (1812-70), best known for his autobiographical book "My Past and Thoughts" and social novel "Who Is to Blame?" lived before leaving Russia. Located at 27 Sivtsev Vrazhek. M. Kropotkinskaya, Smolenskaya. Ticket office open 11 a.m. to 5:30 p.m., Thurs. 2 to 7:30 p.m., closed Mon. and the last day of the month. 499-241-5859, [www.goslitmuz.ru/ru/herzen-museum](http://www.goslitmuz.ru/ru/herzen-museum)

### **Alexander Ostrovsky House Museum:**

Permanent display, about the life and work of this 19th-century Russian playwright who almost single-handedly created a Russian national repertoire. Located at 9 Malaya Ordynka, Bldg. 1. M. Polyanka, Tretyakovskaya. Ticket office open noon to 6:30 p.m., Thurs. 1 to 8:30 p.m., closed Mon., Tues. and the last Fri. of the month. 495-953-8684, [www.bakhrushin.theatre.ru/branches/dmo](http://www.bakhrushin.theatre.ru/branches/dmo)

### **Alexander Pushkin Apartment Museum and Exhibition Hall:**

Pushkin and Moscow: permanent display. Located at 55/32 Arbat, entrance from Denezhny Pereulok. M. Smolenskaya. Ticket office open 10 a.m. to 5:30 p.m., Thurs. noon to 8:30 p.m., closed Mon., Tues. and the last Friday of the month. 499-241-9295, [www.pushkinmuseum.ru](http://www.pushkinmuseum.ru)

### **Alexander Pushkin Museum:**

Open Storage of rare books, paintings, graphics, porcelain, bronzes, ceramics, genealogical materials and private collections.

Pushkin and His Age (Pushkin i Yego Epokha): permanent display.

Pushkin's Tales (Skazki Pushkina): permanent display. Located at 12/2 Ul. Prechistenka. M. Kropotkinskaya. Ticket office open 10 a.m. to 5:30 p.m., Thurs. noon to 8:30 p.m., closed Mon. and the last Fri. of the month. 495-637-5674, [www.pushkinmuseum.ru](http://www.pushkinmuseum.ru)

### **Alexander Scriabin Memorial Museum:**

Permanent display: the house furnished just as it was when the composer lived here from 1912 to 1915, including the library, paintings and pianos. Located at 11 Bolshoi Nikolopeskovsky

Pereulok. M. Smolenskaya, Arbatskaya. Wed., Fri., Sat. and Sun. 11 a.m. to 6 p.m., Thurs. 1 to 9 p.m., closed Mon., Tues. and the last Friday of the month. 499-241-1901, [www.anscriabin.ru](http://www.anscriabin.ru)

### **Anatoly Lunacharsky Memorial Study:**

Permanent display: an exhibit devoted to Anatoly Lunacharsky (1875-1933) — Russian writer, translator, essayist, art critic, politician and the first Soviet Commissar of Enlightenment responsible for culture and education. Located at 9/5 Denezhny Pereulok, Apt. 1. M. Smolenskaya. By appointment 499-241-8873, [www.goslitmuz.ru/ru/lunacharsky-museum](http://www.goslitmuz.ru/ru/lunacharsky-museum)

### **Andrei Bely Apartment Museum:**

Permanent display: personal belongings, portraits and rare archive materials of this acclaimed Silver Age poet and novelist. Located at 55 Arbat. M. Smolenskaya. Ticket office open 10 a.m. to 5:30 p.m., Thurs. noon to 8:30 p.m., closed Mon., Tues. and the last Friday of the month. 499-241-9295, [www.pushkinmuseum.ru](http://www.pushkinmuseum.ru), [kvartira-belogo.guru.ru](http://kvartira-belogo.guru.ru)

### **Andrei Rublev Museum of Early Russian Culture and Art:**

Permanent display: icons, wall paintings, decorative art, manuscripts and black-letter books in the restored buildings of the former Spaso-Andronikov Monastery. Located at 10 Andronyevskaya Ploshchad. M. Rimskaya, Ploshchad Iliche. Ticket office open 11 a.m. to 5:15 p.m., closed Wed. and the last Friday of the month. 495-678-1467, [www.rublev-museum.ru](http://www.rublev-museum.ru)

### **Andrei Sakharov Museum and Public Center:**

Permanent display devoted to the legacy of this human rights activist and physicist chronicles the political repression of Soviet citizens from 1917 to the 1980s with photographs and documentary materials. Located at 57 Zemlyanoi Val, Bldg. 6. M. Kurskaya. Ticket office open 11 a.m. to 7 p.m., closed Mon. 495-623-4401/4420, [www.sakharov-center.ru](http://www.sakharov-center.ru)

### **Anna Golubkina Studio Museum:**

Collection of Sculptures by this prominent master of the Silver Age art culture, a student of Rodin, permanent display. Located at 12 Bolshoi Lyovshinsky Pereulok. M. Park Kultury, Smolenskaya. Wed., Thurs. and Fri. noon to 6 p.m., Sat. and Sun. 10 a.m. to 4 p.m., closed Mon. and the last Friday of the month. 495-637-2564/5682, [www.tretyakovgallery.ru/ru/museum/branch/museum\\_studio\\_golubkina](http://www.tretyakovgallery.ru/ru/museum/branch/museum_studio_golubkina)

### **Anton Chekhov House Museum:**

Permanent display: the writer's Moscow apartment, with a small display of photos and manuscripts. Located at 6 Sadovaya-Kudrinskaya Ul. M. Barrikadnaya. Tues., Thurs., Sat. 11 a.m. to 6 p.m., Wed., Fri. 2 to 8 p.m., closed Mon. and the last day of the month. 495-691-6154/3837, [www.goslitmuz.ru/ru/chekhov-museum](http://www.goslitmuz.ru/ru/chekhov-museum)

### **Anton Chekhov Memorial Museum at Melikhovo:**

Permanent display: the house furnished more or less as it was when the writer lived there from 1892 to 1899 and wrote the famous play "The Seagull." Located in Melikhovo,

from Kursky Station to Chekhov, then bus 25. 10 a.m. to 5 p.m., closed Mon. and the last Friday of the month. 499-270-7991, [www.chekhov-melikhovo.com](http://www.chekhov-melikhovo.com)

### **Arkhangelskoye Estate Museum:**

18th-Century Palace and Park Ensemble (Dvortsovo-Parkovy Ansambl 18 Veka) features works from the collection of Count Yusupov, permanent display. Located at Posyolok Arkhangelskoye, 5th kilometer of Ilyinskoye Shosse. M. Tushinskaya, then bus 549 to Arkhangelskoye or bus 151 to Sanatory. Park open 10 a.m. to 6 p.m. Exhibitions open 10 a.m. to 5 p.m., Sat., Sun. and holidays 10 a.m. to 6 p.m., closed Mon., Tues. and the last Wed. of the month. 495-797-5409, [www.arhangelskoe.ru](http://www.arhangelskoe.ru)

### **Art Deco Museum:**

Mkrtich Okroyan's Collection of Art Deco sculptures, furniture and decorative art, permanent display. Located at 2/4 Luzhnetskaya Naberezhnaya, Bldg. 4. M. Vorobyovy Gory. Tues. to Sat. 11 a.m. to 9 p.m., closed Mon. and Sun. 495-639-9484, [www.artdecomuseum.ru](http://www.artdecomuseum.ru)

### **Art4.ru:**

Contemporary Russian Art collected by Igor Markin and housed in a private museum. Located at 4 Khlynovsky Tupik. M. Tverskaya. By appointment 499-136-5656, [art4.ru](http://art4.ru)

### **ArtStory Gallery:**

MT PICK Moisei Feigin (1904-2008): retrospective of works by this avant-garde artist, to Feb. 8. Located at 14 Staropimenovsky Pereulok. M. Tverskaya, Mayakovskaya. Noon to 8 p.m., closed Mon. 495-650-1343, [www.art-story.com](http://www.art-story.com)

### **Bakhrushin Theater Museum:**

Golden Age of Russian Theater (Zolotoi Vek Russkogo Teatra): posters, photos, costumes and other memorabilia of famous Russian actors and directors of the last two centuries, permanent display. Located at 31/12 Ul. Bakhrushina. M. Paveletskaya. Ticket office open noon to 6:30 p.m., Thurs. 1 to 8:30 p.m., closed Mon., Tues. and the last Fri. of the month 495-953-4470/4848, [www.gctm.ru/museum](http://www.gctm.ru/museum)

### **Belyayevo Gallery:**

Yury Yakovenko: Myths, Symbols, Sins, Tarot and other series of surrealist etchings, to Feb. 8. Located at 100 Profsoyuznaya Ul. M. Belyayevo. 11 a.m. to 9 p.m., closed Mon. 499-793-4121, 495-335-8322, [www.gallery-belyaevo.ru](http://www.gallery-belyaevo.ru)

### **Bogoroditse-Smolensky Novodevichy Convent:**

Novodevichy Convent and Cemetery: A beautiful 17th-century complex that was founded in 1524 by Tsar Vasily III, then, after the Time of Troubles, was significantly rebuilt and enhanced by the Regent Sofia, who was later confined here by Peter the Great with his unwanted first wife. Now belongs to the Moscow Eparchy of the Russian Orthodox Church. Located at 1 Novodevichy Proyezd. M. Sportivnaya. 499-245-3168,

[www.mepar.ru/eparhy/temples/?temple=1166](http://www.mepar.ru/eparhy/temples/?temple=1166)

### **Boris Pasternak Museum:**

Permanent Display: The famous dacha home where the author of "Dr. Zhivago" weathered attacks after being awarded the 1958 Nobel Prize for Literature. Located in Peredelkino, 3 Ul. Pavlenko. From Kievsky Station to Peredelkino. Ticket office open 11 a.m. to 5:30 p.m., Thurs. 1 to 7:30 p.m., closed Mon. and the last day of the month. 495-934-5175, [www.pasternakmuseum.ru/index\\_angl.html](http://www.pasternakmuseum.ru/index_angl.html)

### **Brothers Lumiere Center of Photography:**

PROzavod: 20th-century Russian industrial photography, to March 1.

Sabine Weiss: photographs of Paris, to Feb. 8. Located at 3 Bolotnaya Naberezhnaya, Bldg. 1. M. Kropotkinskaya. Noon to 9 p.m., Sat. and Sun. 11 a.m. to 9 p.m., closed Mon. 495-228-9878, [www.lumiere.ru](http://www.lumiere.ru)

### **Bulgakov House:**

Odd Flat: The communal apartment, in which Mikhail Bulgakov lived in 1921 to 1924, and which became the prototype of the "Odd Flat" where Woland took up residence with his court. Permanent displays, performances, exhibits and excursions devoted to the life and work of Mikhail Bulgakov and his novel "The Master and Margarita." Located at 10 Bolshaya Sadovaya Ul. through the arch, Apt. 50. M. Mayakovskaya. 1 to 11 p.m., Fri. and Sat. 1 p.m. to 1 a.m. Free admission. 495-970-01619, [www.dombulgakova.ru](http://www.dombulgakova.ru)

### **Christ the Savior Cathedral Museum:**

History of the Christ the Savior Cathedral: permanent display. Located at 15 Ul. Volkhonka. M. Kropotkinskaya. 10 a.m. to 6 p.m., closed the last Monday of the month. 495-637-1276, 495-924-8058/8490, [www.xxc.ru/complex/museum/index.htm](http://www.xxc.ru/complex/museum/index.htm), [www.xxc.ru/english/index.htm](http://www.xxc.ru/english/index.htm)

### **Darwin Museum:**

Chukotka in photographs by Andrei Parshakov, to March 1.

Pass the Path of Evolution: a new interactive multimedia exhibition, permanent display.

Permanent displays: Macroevolution, Microevolution, Zoogeography, The Diversity of Life on Earth, Live Exhibition and others. Located at 57 Ul. Vavilova. M. Akademicheskaya. Ticket office open 10 a.m. to 6 p.m., Thurs. 1 to 9 p.m. closed Mon. and the last Fri. of the month. 499-134-6124, 783-2253, [www.darwin.museum.ru/eng](http://www.darwin.museum.ru/eng)

### **Dom Ikony Na Spiridonovke:**

Icons and other works of Christian art from a private collection, permanent display. Located at 4 Ul. Spiridonovka. M. Arbatskaya, Tverskaya. Noon to 10 p.m. 495-690-5474, [www.dom-ikony.ru](http://www.dom-ikony.ru)

### **English Courtyard Museum:**

Russian-English Trade Relations (Russko-Angliiskiy Torgoviy Otnosheniya): This building, the cultural and commercial center of the English community in Moscow in the 16th and 17th centuries, reflects the development of Russian-English relations through the centuries, permanent display. Located at 4A Ul Varvarka. M. Kitai-Gorod. Ticket office open 10 a.m. to 5:30 p.m., Thurs. 1 to 8:30 p.m., closed Mon. and the last Friday of the month. 495-698-3952, [www.mosmuseum.ru/museum-menu-english-dvor.html](http://www.mosmuseum.ru/museum-menu-english-dvor.html)

### **Fyodor Chaliapin House Museum:**

Permanent display: a small exhibit devoted to the great Russian bass. Located at 25 Novinsky Bulvar. M. Barrikadnaya. Ticket office open Tues. and Sat. 10 a.m. to 5 p.m., Wed. and Thurs. 11:30 a.m. to 6 p.m., Sun. 10 a.m. to 3:30 p.m., closed Mon., Fri. and the last day of the month. 495-605-6236, 252-2530, [www.shalyapin-museum.org](http://www.shalyapin-museum.org)

### **Fyodor Dostoevsky Apartment Museum:**

Permanent display: a small exhibit devoted to the author of "Crime and Punishment" and "The Brothers Karamazov" in the house where he was born. Located at 2 Ul. Dostoyevskogo. M. Novoslobodskaya. Ticket office open 11 a.m. to 5:30 p.m., Wed. and Thurs. 1 to 7:30 p.m., closed Mon. and the last day of the month. 495-681-1085, [www.goslitmuz.ru/ru/dostoyevsky-museum](http://www.goslitmuz.ru/ru/dostoyevsky-museum)

### **Gary Tatintsian Gallery:**

Lee Ufan: minimalist paintings and installations by this internationally acclaimed Korean artist and philosopher, to March 21. Located at 19 Serebryanicheskaya Naberezhnaya. M. Chkalovskaya. Tues. to Fri. 11 a.m. to 7 p.m., Sat. noon to 6 p.m. closed Sun. and Mon. 495-645-4404, [www.tatintsian.com](http://www.tatintsian.com)

### **Gogol House:**

Memorial Museum and Scholarly Library in this Moscow estate house where Nikolai Gogol spent his four last years. Located at 7A Nikitsky Bulvar. M. Arbatskaya. Mon., Wed., Fri. noon to 7 p.m., Thurs. 2 to 9 p.m., Sat. and Sun. noon to 5 p.m., closed Tues. and the last day of the month. 495-9256, [www.domgogolya.ru](http://www.domgogolya.ru)

### **Gromova Gallery:**

NEW A Warm Day (Tyoply Den): touching sculptural compositions made of felt by Irina Andreyeva, Feb. 5 to 28. Located at 23 Savvinskaya Naberezhnaya. M. Sportivnaya. Noon to 8 p.m. 495-642-7236, 507-1071, [www.elenagromova.com](http://www.elenagromova.com)

### **Historical Museum:**

English Breakfast (Angliisky Zavtrak): interior items, ceramics, porcelain and glass, to March 3.

The Bronze Age (Epokha Bronzy): permanent display.

The History of Russia From Ancient Times to the Early 20th Century (Istoriya Rossii s Drevneishikh Vremyon do Nachala 20 Veka): permanent display.

The Patriotic War of 1812 (Otechestvennaya Voina 1812 Goda): an addition to the permanent display.

World War I. The Last Battle of the Russian Empire (Pervaya Mirovaya. Poslednyaya Bitva Rossiiskoi Imperii): large-scale historical show, to Feb. 8.

### **Historical Museum affiliate:**

The Romanov Chambers in Zaryadye: authentic interiors of a 17th-century Russia boyar home, permanent display. Located at 1/2 Red Square. M. Ploshchad Revolyutsii. Ticket office open 10 a.m. to 5:30 p.m., Thurs. 11 a.m. to 8 p.m., closed Tues. 495-692-4019, [www.shm.ru](http://www.shm.ru)

### **In Arbitus:**

MT PICK Vladimir Veisberg (1924-85): paintings and graphics from Russian museum and private collections, to March 1. Located at 17 Prechistenskaya Naberezhnaya, entrance from Kursovoi Pereulok. M. Kropotkinskaya. 11 a.m. to 8 p.m., closed Mon. 495-640-0249, [www.inarbitus.ru](http://www.inarbitus.ru)

### **Institute of Russian Realist Art:**

Permanent display of Russian and Soviet realist art. Located at 7 Derbenyovskaya Naberezhnaya, Bldg. 31. M. Paveletskaya, Proletarskaya, tram 3 to Novospassky Dvor, entrance from Derbenyovskaya Ulitsa. Tues. to Sun. 11 a.m. to 8 p.m., closed Mon., ticket office open 11 a.m. to 7 p.m. 495-276-1212, [rusrealart.ru](http://rusrealart.ru)

### **International Roerich Center:**

Nikolai Roerich Museum: a collection of works by the great painter and philosopher known best for his landscapes of India, permanent display. Located at 3/5 Maly Znamensky Pereulok. M. Kropotkinskaya. Ticket office open 11 a.m. to 6 p.m., closed Mon. 499-271-3417/20, [www.icr.su](http://www.icr.su)

### **Ivan Turgenev Museum:**

Moscow. Ostozhenka. Turgenev: permanent display about the life and work of this beloved novelist, playwright and poet. 37 Ul. Ostozhenka. M. Park Kultury. Ticket office open 10 a.m. to 5:30 p.m., Thurs. noon to 8:30 p.m., closed Mon., Tues. and the last Friday of the month. 495-695-1078, [www.pushkinmuseum.ru](http://www.pushkinmuseum.ru)

### **Jewish Museum & Tolerance Center:**

History of the Jews: This multimedia interactive exposition focuses on key historical periods and begins at the Beginning Theater with a 4D film based on the Torah, permanent display.

Man and Catastrophe (Chelovek i Katastrofa): Exhibit of paintings by Jan Vanriet and photographs by Yegor Zaika marks the 70th anniversary of the liberation of Auschwitz

concentration camp, to March 1. Located at 11 Ul. Obraztsova, Bldg. 1A. M. Savyolovskaya, then two stops by bus 12 to Ulitsa Obraztsova. Sun. to Thurs. noon to 10 p.m., Fri. 10 a.m. to 3 p.m. closed Sat. and Jewish holidays. 495-645-0550, [www.jewish-museum.ru](http://www.jewish-museum.ru)

### **Kino Gallery:**

NEW Landscapes: paintings by Alexei Timokhin, Wed. to Feb. 13. Located at 8 Bolshoi Rzhevsky Pereulok, entrance from Ul. Malaya Molchanovka through the gates. M. Arbatskaya. Noon to 7 p.m., closed Sat. and Sun. 495-691-9115/8351, [www.gallerykino.ru](http://www.gallerykino.ru)

### **Kolomenskoye Estate Museum:**

Apostles of the Book (Apostoly Knigi): exhibit of unique early Russian books, including a rare copy of the first printed book known as "The Apostle," to Sat. at Dvorets Aleksey Mikhailovicha.

Russian Tsarist Estate: built between the 15th and 17th centuries, situated on a high bank of the Moscow River and now an architectural museum.

Stable Yard (Konyushenny Dvor): This exhibition complex includes stables with Orlov and Russian trotters, a coach house with carriages and sledges, a smithy and a hayloft.

Tsar's Feast at Kolomenskoye (Tsarsky Pir v Kolomenskom): multimedia reconstruction of feasts put on by Tsar Alexei Mikhailovich in the 17th century, permanent show at Dvorets Aleksey Mikhailovicha. Located at 39 Prospekt Andropova. M. Kolomenskaya, Kashirskaya. 10 a.m. to 6 p.m., closed Mon. 499-782-8917/21, [mgomz.ru/kolomenskoe](http://mgomz.ru/kolomenskoe)

### **Konstantin Stanislavsky Museum:**

Permanent display: the home that was occupied by the co-founder of the Moscow Art Theater and the creator of the famous acting system. Located at 6 Leontyevsky Pereulok. M. Tverskaya. 11 a.m. to 6 p.m., Thurs. 11 a.m. to 9 p.m., closed Mon. and Tues. 495-629-2855, [www.mxat.ru/museum](http://www.mxat.ru/museum)

### **Kornei Chukovsky House Museum:**

Permanent display: The famous dacha of Russia's most popular children's poet and an influential literary critic and essayist. Located in Peredelkino, 3 Ul. Serafimovicha. From Kievsky Station to Peredelkino. Ticket office open 11 a.m. to 5:30 p.m., Thurs. 1 to 7:30 p.m., closed Mon. and the last day of the month. 495-593-2670, [goslitmuz.ru/ru/chukovsky-museum](http://goslitmuz.ru/ru/chukovsky-museum)

### **Kovcheg Gallery:**

Drawing in Beskudnikovo (Risovaniye v Beskudnikovo): works by Alexander Maximov, to Feb. 22. Located at 12 Ul. Nemchinova. M. Timiryazevskaya, then bus 87 or 206 to Gostinitsa Molodyozhnaya. Ticket office open 11 a.m. to 7:30 p.m., closed Mon. 499-977-0044/88, [www.kovcheg-art.ru](http://www.kovcheg-art.ru)

### **Krokin Gallery:**



NEW Venice — St. Petersburg: photographs by Svetlana Konegen, opens Thurs. at 6 p.m., runs to Feb. 7. Located at 9 Klimentovsky Pereulok. M. Tretyakovskaya, Novokuznetskaya. By appointment. 8-964-564-0303, [www.krokingallery.com](http://www.krokingallery.com)

### **Kuzminki Estate Museum:**

Museum of Russian Estate Culture (Muzei Russkoi Usadebnoi Kultury): permanent display. Located in the Kuzminki Park at 6 Topolyovaya Alleya. M. Ryazansky Prospekt, then bus 29. Ticket office open 10 a.m. to 5:30 p.m., closed Mon. and the last Fri. of the month. 495-377-9457, 376-7610, [www.kuzminky.ru](http://www.kuzminky.ru)

### **Lefortovo Museum:**

Lefortovo. Landmarks of History (Lefortovo. Vekhi Istorii): the history of this Moscow district named after a close associate of Tsar Peter the Great, Franz Lefort, whose troops were stationed nearby in the German Quarter, permanent display. Located at 23 Kryukovskaya Ul. M. Semyonovskaya, Aviamotornaya. Ticket office open 10 a.m. to 5:30 p.m., closed Mon. and the last Fri. of the month. 495-360-0147, [www.mosmuseum.ru/museum-menu-lefortovo.html](http://www.mosmuseum.ru/museum-menu-lefortovo.html)

### **Leo Tolstoy Museum:**

Permanent display: This museum dedicated to the author of "War and Peace" and "Anna Karenina" has three branches. Branch at 12 Pyatnitskaya Ul. M. Novokuznetskaya. 495-951-5808. Ticket offices open 11 a.m. to 5:30 p.m., Thurs. noon to 7:30 p.m., closed Mon. and the last Friday of the month. [tolstoymuseum.ru](http://tolstoymuseum.ru)

### **Lopasnya-Zachatyevskoye Estate Museum:**

Permanent display: park with seven ponds and a main building, known first as the Goncharov House and later as the Pushkin Nest. The exhibit tells the story of ties of the estate owners the Vasilchikovs with the Pushkins, Lanskies and Goncharovs. Located in Chekhov, 10 Ul. Pushkina. M. Yuznaya, then bus 365 to Skver Imeni Chekhova. 10 a.m. to 5 p.m., closed Mon. and the last Friday of the month. 496-723-0389, [www.chekhov-melikhovo.com/index.php/en/museum-melikhovo/lopasnya](http://www.chekhov-melikhovo.com/index.php/en/museum-melikhovo/lopasnya)

### **Lyublino Estate Museum:**

Durasov Palace: perfectly preserved early 19th-century manor that belonged to Moscow landowner Nikolai Durasov, permanent display.

Palace and Park Ensemble, built by Moscow landowner Nikolai Durasov, represents the mode of life of the 19th-century Moscow nobility, permanent display. Located at 1 Letnyaya Ul. M. Volzhskaya. 10 a.m. to 6 p.m., closed Mon. 499-722-7189, [mgomz.ru/lublino](http://mgomz.ru/lublino)

### **Maria Yermolova Museum:**

Permanent display: a small but elegant apartment museum dedicated to the great Maly Theater actress of the end of the 19th century. Located at 11 Tverskoi Bulvar. M. Tverskaya. Noon to 7 p.m., Thurs. 1 to 9 p.m. closed Tues. and the last Fri. the month.

495-690-5416/4901, [www.bakhrushin.theatre.ru/branches/dme](http://www.bakhrushin.theatre.ru/branches/dme)

### **Marina Tsvetayeva Museum:**

Permanent display: house museum where the poet lived from 1914 to 1922. Located at 6 Borisoglebsky Pereulok. M. Arbatskaya, Smolenskaya. Noon to 5:30 p.m., Thurs. noon to 8:30 p.m., closed Mon. and the last Friday of the month. 495-697-5369, [www.dommuseum.ru](http://www.dommuseum.ru)

### **Mikhail Glinka Museum of Musical Culture:**

Permanent display of musical instruments. Located at 4 Ul. Fadeyeva. M. Mayakovskaya. Ticket office open 11 a.m. to 6 p.m., closed Mon. and the last day of the month. 495-739-6226, [www.glinka.museum](http://www.glinka.museum)

### **Mikhail Prishvin House Museum:**

Summer Estate of Russian writer Mikhail Prishvin (1873-1954). Located at 2 Dunino Village. M. Molodyozhnaya, then bus 121 to Lesniye Dali, ticket office open 11 a.m. to 5:30 p.m., Thurs. 1 to 6:30 p.m., closed Mon. 499-553-8132, [www.prishvin.ru](http://www.prishvin.ru)

### **Mikhail Shchepkin House Museum:**

Permanent display, about the life and work of this 19th-century Russian actor. Located at 47 Ul. Shchepkina, Bldg. 2. M. Prospekt Mira. Ticket office open Wed., Fri., Sat., Sun. noon to 7 p.m., Thurs. 1 to 6:30 p.m., closed Mon., Tues. and the last Fri. of the month. 495-600-6149, [bakhrushin.theatre.ru/branches/dmsch](http://bakhrushin.theatre.ru/branches/dmsch)

### **Moscow Kremlin:**

The Diamond Fund (Almazny Fond): items from the State Fund collection, permanent display. Located at the Moscow Kremlin. Borovitsky Gate entrance. M. Borovitskaya. 10 a.m. to 5 p.m., closed Thurs. 495-699-2036, [gokhran.ru/ru/exhibition](http://gokhran.ru/ru/exhibition)

### **Moscow Kremlin Museums:**

The Armory Chamber (Oruzheynaya Palata), the Patriarchy Palace (Patriarshiye Palaty), the Ivan the Great Belfry (Kolokolnya Ivana Velikogo), the Assumption Cathedral (Uspensky Sobor), the Archangel Cathedral (Arkhangelsky Sobor) and other cathedrals, permanent display. Located at the Moscow Kremlin. Borovitsky Gate entrance. M. Borovitskaya. 10 a.m. to 5 p.m., closed Thurs. 495-695-4146, [www.kreml.ru/en](http://www.kreml.ru/en)

### **Moscow Museum of Modern Art on Petrovka:**

Fortune Museum (Muzei s Predskazaniyami): Moscow Museum of Modern Art jubilee show, to March 15. Located at 25 Petrovka. M. Chekhovskaya. Noon to 8 p.m., ticket office to 7:15 p.m., Thurs. 1 to 9 p.m., ticket office to 8:15 p.m., closed every third Monday of the month. 495-231-3660, [www.mmoma.ru](http://www.mmoma.ru)

### **Moscow Planetarium:**

Permanent shows: interactive museum with the Lunarium, Big and Small Star Halls,

the Urania Museum and 4D Cinema Theater. Located at 5 Sadovaya-Kudrinskaya Ul. M. Barrikadnaya. 9 a.m. to 9 p.m., weekends and holidays 10 a.m. to 10 p.m., closed Tues. 495-221-7690, [www.planetarium-moscow.ru](http://www.planetarium-moscow.ru)

### **Multimedia Art Museum:**

Julia Margaret Cameron (1815-79): Victoria and Albert Museum shows 110 works from its collection of works by this British pioneer of photography, to Sun.

Marc Riboud 150 works by this renowned French photographer, to Sun.

Shoes, Dominoes and Happiness (Tufli, Domino i Schastye): kinetic sculptures and video installations by Greek artist Anna Vasof, to Feb. 15. Located at 16 Ul. Ostozhenka. M. Kropotkinskaya. Ticket office open noon to 9 p.m., closed Mon. 495-637-1100, [www.mamm-mdf.ru/en](http://www.mamm-mdf.ru/en)

### **Museum of Applied, Decorative and Folk Art:**

Bric-a-Brac (Bezdelushki): exhibit of now out-of-use domestic appliances in late 19th-century interiors, to Feb. 8.

Masterpieces of Soviet Porcelain from the 1920s to the 1970s, permanent display.

Russian Folk Art From the 18th to the 20th Century: permanent display.

Russian Lacquer Miniatures by masters of Palekh, Fedoskino, Kholui and Mstyora, permanent display.

MT PICK Unrivalled Wedgwood: large exhibition of masterpieces from Russian museums and from the Lady Lever Collection (Liverpool) which have never traveled abroad before, to Sun. Located at 3 Delegatskaya Ul. M. Tsvetnoi Bulvar. Ticket office open 11 a.m. to 5 p.m., closed Tues. and the last Mon. of the month. 495-609-0146, Thurs. 10 a.m. to 8 p.m., [www.vmdpni.ru](http://www.vmdpni.ru)

### **Museum of Jewish History in Russia:**

Permanent display: artifacts representing the history of Jews who lived under Russian rule after the three partitions of Poland. Located at 10 Petrovsko-Razumovskaya Alleya, Bldg.3. M. Dynamo. Mon. to Wed. and Fri. noon to 7 p.m., Thurs. noon to 9 p.m., Sun. noon to 5 p.m., closed Sat. Free admission. 495-656-4571, [www.mievr.ru](http://www.mievr.ru)

### **Museum of Moscow:**

Moscow University. 260 Years: historical exhibit, to Feb. 22.

The Clarity of Purpose (Yasnost Tseli): Soviet sculptures, porcelain and other items from the museum collection and photographs by Mikhail Rozanov, to Mar. 1.

The History of Moscow from old times to the present, permanent display. Located at 2 Zubovsky Bulvar, entrance from Ostozhenka. M. Park Kultury. Ticket office open Tues., Wed., Fri. 10 a.m. to 5:30 p.m., Sat., Sun. 11 a.m. to 5:30 p.m., closed Mon. and the last Friday of the

month. 499-766-4196, [www.mosmuseum.ru](http://www.mosmuseum.ru)

### **Museum of Private Collections:**

Permanent display in 23 halls includes 1,500 works of art.

MT PICK Visiting Rodchenko and Stepanova (V Gostyakh u Rodchenko i Stepanovoi): exhibit dedicated to artists Alexander Rodchenko and Varvara Stepanova — two leading masters of the early Russian avant-garde, to March 8. Located at 10 Ul. Volkhonka. M. Kropotkinskaya. 11 a.m. to 7 p.m., Thurs. 11 a.m. to 9 p.m., closed Mon. and Tues. 495-697-1610, [www.arts-museum.ru](http://www.arts-museum.ru), [artprivatecollections.ru](http://artprivatecollections.ru)

### **Museum of Russian Icons:**

Permanent display: East European Christian art from the 6th to the 20th century. Located at 3 Goncharnaya Naberezhnaya, entrance from Bolshoi Vatin Pereulok. M. Taganskaya. 11 a.m. to 7 p.m., closed Wed. 495-221-5283, [www.russikona.ru](http://www.russikona.ru)

### **Museum of the Contemporary History of Russia:**

From the English Club to the Museum of the Contemporary History of Russia: permanent display.

State Symbols of Russia. History and the Present Day (Gosudarstvennaya Simvolika Rossii. Istoriya i Sovremennost): permanent display. Located at 21 Tverskaya Ul., M. Tverskaya. Ticket office open Tues., Wed. and Fri. 10 a.m. to 5:30 p.m., Thurs. and Sat. 11 a.m. to 6:30 p.m., Sun. 10 a.m. to 4:30 p.m., closed Mon. 495-699-5458, [www.sovr.ru](http://www.sovr.ru)

### **Museum of Unique Dolls:**

Permanent display of antique dolls. Located at 13 Ul. Pokrovka. M. Turgenevskaya, Kitai-Gorod, Chistiye Prudy. Fri., Sat. Sun. 10 a.m. to 6 p.m., Tues., Wed. Thurs. excursions at noon, 2 and 6 p.m., closed Mon. Free admission. 495-625-6405/7512, [www.dollmuseum.ru](http://www.dollmuseum.ru)

### **Nemirovich-Danchenko Apartment Museum:**

Permanent display: the home that was occupied by the stage director, playwright and co-founder of the Moscow Art Theater. Located at 5/7 Glinishchevsky Pereulok, entrance 5, apt. 52. M. Tverskaya. 11 a.m. to 5:30 p.m., closed Mon. and Tues. 495-650-5391, [www.mxat.ru/museum](http://www.mxat.ru/museum)

### **New Tretyakov Gallery:**

Alexander Rodchenko. Workers Club: (1885-1953): The reconstructed interior of a club for workers designed by this constructivist artist, permanent display.

MT PICK Georgy Kostaki (1913-90): one of the best collections of Russian art, to Feb. 8.

Main exhibit halls: a display of 20th-century Russian art.

NEW Yuvenaly Korovin (1914-91): paintings, graphics, illustrations, Wed. to April 19.

MT PICK Zorikto Dorzhiyev: paintings, drawings and bronze sculptures by this acclaimed Buryat artist, to March 1. Located at 10 Krymsky Val. M. Oktyabrskaya, Park Kultury. Ticket office open 10 a.m. to 6:30 p.m., closed Mon. 499-230-7788, 238-1378, 495-951-1362. Excursions 495-953-5223. An Autoline minibus runs from outside the New Tretyakov Gallery to the Tretyakov Gallery at 10/12 Lavrushinsky Pereulok daily at 12:20, 1:20, 2:20, 3:20 and 4:20 p.m., [www.tretyakovgallery.ru](http://www.tretyakovgallery.ru)

### **New Western Art Gallery:**

European and American Art from the 19th and 20th centuries.

MT PICK Paul Klee (1879-1940): large exhibit of works by this seminal painter from Swiss collections, to March 1. Located at 14 Volkhonka. M. Kropotkinskaya. 11 a.m. to 8 p.m., Thurs. 11 a.m. to 9 p.m., closed Mon. 495-697-1546, [www.arts-museum.ru](http://www.arts-museum.ru), [www.newpaintart.ru](http://www.newpaintart.ru)

### **Nikolai Golovanov Apartment Museum:**

Memorial Apartment of this distinguished conductor who was expelled from the Bolshoi Theater three times, in 1928, 1936 and 1953, permanent display. Located at 7 Bryusov Pereulok, apt. 10. M. Tverskaya, Pushkinskaya. Open Mon. and Wed. 2 to 5 p.m. 495-629-7083, [www.glinka.museum/about/apartment\\_museum\\_golovanov](http://www.glinka.museum/about/apartment_museum_golovanov)

### **Oriental Art Museum:**

Extra Storeroom (Osobaya Kladovaya): North Caucasian archeological findings from the 5th century BC to the 14th century AD, permanent display. Reservations required.

Permanent Displays: art of Korea, India, Iran, China, Asia, Siberia and others, permanent display.

Tea, Wine and Poetry (Chai, Vino, Poeziya): Chinese, Japanese, Asian and Caucasian traditions in works from the museum collection, to March 22. Located at 12 Nikitsky Bulvar. M. Arbatskaya. Ticket office open 11 a.m. to 7:30 p.m., Thurs. noon to 8:30 p.m., closed Mon. 495-691-9614/0212, [www.orientmuseum.ru](http://www.orientmuseum.ru)

### **Osnova Gallery at Winzavod Center of Contemporary Art:**

New Abstract: works by young artist Sasha Pichuzhkin, to Feb. 22. Located at 1 4th Syromyatnichesky Pereulok, Bldg. 6, entrance 22. M. Chkalovskaya, Kurskaya. Noon to 8 p.m., closed Mon. 8-926-887-3987, [osnovagallery.ru](http://osnovagallery.ru)

### **Otkrytaya Gallery:**

Steampunk Couture: conceptual installation of costumes, accessories and children's toys by designers from Izmir (Turkey), to Sun. Located at 22 Trubnikovsky Pereulok, Bldg. 2. M. Barrikadnaya. Wed. to Fri. 1 to 8 p.m., Sat. noon to 6 p.m., closed Mon., Tues. and Sun. 495-772-2736, 499-530-2727, [www.open-gallery.ru](http://www.open-gallery.ru)

### **Pop/off/art Gallery at Winzavod Center of Contemporary Art:**

Vitaly Pushnitsky shows recent paintings and graphics, to Sun. Located at 14th Syromyatnichesky Pereulok, Bldg. 6. M. Chkalovskaya, Kurskaya. Noon to 8 p.m., closed Mon. 495-775-8706, [popoffart.com](http://popoffart.com)

### **Project Fabrika:**

NEW Jubilee Show of contemporary Russian art includes installations, sound art, video art, objects, sculptures and paintings, Sat. to Feb. 28. Located at 18 Perevedenovsky Pereulok. M. Baumanskaya, Elektrozavodskaya, then trolleybus 22 or 25 to Balakirevsky Pereulok. Noon to 8 p.m., closed Mon. Free admission. 499-265-3926/3935, [www.proektfabrika.ru](http://www.proektfabrika.ru)

### **Pushkin Museum of Fine Arts:**

MT PICK Drawings by French Masters from the Albertina Museum (Vienna) from the late 16th to the mid-19th century, to Feb. 15.

Music in Paintings: This exhibit of works from major West-European and Russian museums is dedicated to Svyatoslav Richter, to March 1.

Permanent collection: works from ancient Egypt, Assyria, Greece and Rome, plus works from the Middle Ages to the early 20th century.

Piero Della Francesca and His Contemporaries: The Madonna in Renaissance art from Italian museums, to Feb. 22.

Translatio Nummorum: Roman coins from the late 1st century B.C. to the late 1st century A.D., Renaissance gravures and rare 16th-century publications dedicated to ancient coins, to Feb. 8. Located at 12 Volkhonka. M. Kropotkinskaya. 10 a.m. to 7 p.m., Thurs. to 9 p.m., closed Mon. 495-697-9578, [www.arts-museum.ru](http://www.arts-museum.ru)

### **Roza Azora Gallery:**

NEW Atlas: Alexei Lantsev shows chamber landscapes on paper, Tues. to Feb. 24. Located at 14 Nikitsky Bulvar. Mon. to Sat. noon to 8 p.m., Sun. noon to 6 p.m. 495-695-8119, [www.rozaazora.ru](http://www.rozaazora.ru)

### **RuArts Gallery:**

Spencer Tunick: works by this American photographer best known for organizing large-scale nude shoots, to Sat. Located at 10 1st Zachatyevsky Pereulok. M. Kropotkinskaya. Noon to 8 p.m. Free admission. 495-637-4475, [www.ruarts.ru](http://www.ruarts.ru)

### **Sergei Konenkov Studio Museum:**

Permanent display: works by this influential Russian and Soviet sculptor who spent more than 20 years in the United States and returned home in 1945 at the age of 71. Located at 17 Tverskaya Ul. M. Tverskaya, Pushkinskaya. Ticket office open 11 a.m. to 6:30 p.m., closed Mon., Tues. and the last Friday of the month. 495-629-6139, [www.rah.ru/museums/muzey\\_masterskaya\\_s\\_t\\_konenkova.php](http://www.rah.ru/museums/muzey_masterskaya_s_t_konenkova.php)

### **Sergei Prokofiev Museum:**

Memorial Apartment where the composer lived from 1947 to 1953, permanent display. Located at 6 Kamergersky Pereulok. M. Teatralnaya, Okhotny Ryad. Wed. to Sun. 11 a.m. to 5 p.m., closed Mon. and Tues. 495-692-7959, [www.glinka.museum/about/museum\\_of\\_prokofiev](http://www.glinka.museum/about/museum_of_prokofiev)

### **Shchusev Architecture Museum:**

Ceramics in Architecture (Keramika v Arkhitekture): items from the museum collection and works by contemporary artists and architects, to Sun.

On the Hills (Na Kholmakh): an installation on biblical themes by Irina Strazhenetskaya and Anatoly Komelin, to Feb. 6.

NEW Satirical Drawings by Russian Architects from the museum collection, Fri. to April 1.

Soviet Architecture Competitions From the 1920s to the 1950s in graphics, scale models and photographs from the museum collection, to Feb. 15. Located at 5 Vozdvizhenka. M. Biblioteka Imeni Lenina, Arbatskaya, Alexandrovsky Sad. Ticket office open 11 a.m. to 6 p.m., Thurs. 1 to 7 p.m., closed Mon. 495-691-2109, [www.muar.ru](http://www.muar.ru)

### **Silver Age Museum:**

Bryusov House: "Valery Bryusov Memorial Study" and "Pushkin and the Silver Age of Russian Literature," permanent displays. Located at 30 Prospekt Mira. M. Prospekt Mira (circle line). Ticket office open 11 a.m. to 5:30 p.m., Thurs. and Fri. 1 to 7:30 p.m., closed Mon. and the last day of the month. 495-680-8683, [www.goslitmuz.ru/ru/bryusov-museum](http://www.goslitmuz.ru/ru/bryusov-museum)

### **Solyanka VPA:**

Karlsson-on-the-Roof Exhibit (Vystavka Karlsona): multimedia and multi-genre art show, to Feb. 11. Located at 1/2 Solyanka. M. Kitai-Gorod. Tues. to Thurs. 2 to 10 p.m., Fri. noon to midnight, Sat. and Sun. noon to 10 p.m. 495-621-5672, [solyanka.org](http://solyanka.org)

### **St. Basil's Cathedral:**

Sacred Relics of the Pokrovsky Cathedral (Svyatyni Pokrovskogo Sobora): stunning medieval interior, icons, books and other religious relics. Located at 2 Red Square. M. Ploshchad Revolyutsii. Ticket office open in summer, 11 a.m. to 5:30 p.m., in winter 11 a.m. to 4:30 p.m., 495-698-3304 [www.saintbasil.ru](http://www.saintbasil.ru)

### **State Literary Museum:**

Permanent display: books, manuscripts and other items that tell the stories of Russia's great writers. Located at 28 Ul. Petrovka. M. Chekhovskaya. 11 a.m. to 6 p.m., Thurs. 2 to 8 p.m., closed Mon. 495-625-1226, [www.goslitmuz.ru/ru/gos-lit-museum](http://www.goslitmuz.ru/ru/gos-lit-museum)

### **Stella Art on Skaryatinsky:**

Straight Through (Na/Vylet): sculptural objects on war themes by Sergei Shekhovtsev, to Feb.

8. Located at 7 Skaryatinsky Pereulok. M. Barrikadnaya. Noon to 7 p.m., closed Mon.  
495-691-3407, [www.safmuseum.org](http://www.safmuseum.org)

### **Svyatoslav Richter Memorial Apartment:**

Permanent display: the great pianist's apartment, with a display of photos and paintings, video and sound recordings. Located at 2/6 Bolshaya Bronnaya Ul., Apt. 59. M. Pushkinskaya. By appointment Tues., Thurs. and the third Saturday of the month noon to 2 p.m.  
495-695-8346, 697-7205, [www.sviatoslav-richter.ru](http://www.sviatoslav-richter.ru)

### **Tchaikovsky and Moscow Museum:**

Memorial Apartment where the composer lived from September 1872 to November 1873, permanent display. Located at 46/54 Kudrinskaya Ploshchad. M. Barrikadnaya. 10 a.m. to 7 p.m., closed Mon. and Tues. 495-691-1514,  
[www.glinka.museum/about/museum\\_of\\_moscow\\_tchaikovsky](http://www.glinka.museum/about/museum_of_moscow_tchaikovsky)

### **The GULAG History Museum:**

Permanent display: Documents, letters, memoirs and personal belongings of GULAG prisoners. Located at 16 Ul. Petrovka. M. Kuznetsky Most, Teatralnaya. Ticket office open 11 a.m. to 6 p.m., Thurs. noon to 7 p.m., closed Mon. and the last Friday of the week.  
495-621-7310, [www.gmig.ru](http://www.gmig.ru)

### **Tretyakov Gallery:**

Main exhibit halls: masterpieces of Russian icon art and world-famous 19th- and early 20th-century paintings.

MT PICK The Magic of the Body (Magiya Tela): Russian drawings from the late 19th to the 20th century, to April 12. Located at 10/12 Lavrushinsky Pereulok. M. Tretyakovskaya. Ticket office open Tues., Wed., Sat. and Sun. 10 a.m. to 5 p.m., Thurs. and Fri. 10 a.m. to 8 p.m., closed Mon. 499-230-7788, 238-1378, 495-951-1362. An Autoline minibus runs from outside the Tretyakov Gallery to the New Tretyakov Gallery at 10 Krymsky Val daily at noon, 1, 2, 3, 4 and 5 p.m., [www.tretyakovgallery.ru](http://www.tretyakovgallery.ru)

### **Tsaritsyno Museum:**

Catherine the Great: (Velikaya Yekaterina): an exhibit devoted to the Russian empress, permanent display.

Masterpieces of the Tsaritsyno Art Collection (Shedevry Khudozhestvennogo Sobraniya Tsaritsyno): West European tapestry from the 16th to the 18th century, and 20th-century Russian glass and tapestry, permanent display.

The Past and Present of Tsaritsyno (Byl i Nov Tsaritsina): the history of Tsaritsyno, permanent display.

The Silver East (Serebryany Vostok): jewelry from the 19th and early 20th centuries from Kazakhstan, Uzbekistan, Tajikistan, Turkmenistan and Kyrgyzstan, to April 12.



The Silver Storeroom (Serebryanaya Kladovaya): works of Russian jewelry from the 16th to the 20th century, permanent display.

Tsaritsyno Antiquities (Tsaritsynskiye Drevnosti): archaeological findings, permanent display. Located at 1 Dolskaya Ul. M. Tsaritsyno, Orekhovo. Ticket office open 11 a.m. to 5:30 p.m., Sat. 11 a.m. to 7:30 p.m., Sun. and holidays 11 a.m. to 6:30 p.m., closed Mon. Park open daily 6 a.m. to midnight. 499-725-7287, [www.tsaritsyno-museum.ru](http://www.tsaritsyno-museum.ru)

### **UVS Gallery:**

Party: paintings and art objects by Tatyana Nazarenko, to Sat. Located at 1/13 Ul. Pokrovka, entrance by way of Armyansky Pereulok. Tues. to Sat. noon to 8 p.m., closed Sun. and Mon. 495-621-2828, [uvsartgallery.com](http://uvsartgallery.com)

### **Vadim Sidur Museum:**

Vadim Sidur (1924-86): sculptures and graphics by this avant-garde artist, to March 15. Located at 37 Novogireyevskaya Ul., Bldg. 2. M. Perovo. Noon to 7 p.m., closed Mon. and Tues. 495-645-9277, [moscowmanege.ru/en](http://moscowmanege.ru/en)

### **Vadim Zadorozhny's Vehicles Museum:**

Permanent displays: retro cars, motorcycles, weaponry and airplanes. Located at Posyolok Arkhangelskoye, 4th km of Ilyinskoe Shosse, Bldg. 8. M. Tushinskaya, bus 541, 549, 568, 151, 541, 549, 568. M. Strogino, shuttle Strogino-Zacharkovo to Lipovaya Alleya. By car Novorizhskoe Shosse, near Arkhangelskoye. Ticket office open Tues. to Fri. 10 a.m. to 6 p.m., Sat. and Sun. 10 a.m. to 7 p.m., closed Mon. 495-662-3818, [www.tnmuseum.ru](http://www.tnmuseum.ru)

### **Vasily Pushkin House Museum:**

Small Mansion where this Russian neoclassical poet and an uncle of Alexander Pushkin lived from 1824 to 1830, permanent display. Located at 36 Staraya Basmannaya Ul. M. Krasniye Vorota. Ticket office open 10 a.m. to 5:30 p.m., Thurs. noon to 8:30 p.m., closed Mon. and the last Fri. of the month. 495-637-5674, [www.pushkinmuseum.ru](http://www.pushkinmuseum.ru)

### **VDNKh:**

All-Russian Exhibition Center offers various trade, cultural and art shows and fairs.

The City of Dinosaurs (Gorod Dinozavrov): interactive educational and entertainment show from Argentina, to March 11 in Pavilion No. 57 noon to 10 p.m. Located near M. VDNKh. Gates open in summer time from 9 a.m. to 11 p.m. (April 30 to Sept. 28), and in winter time from 9 a.m. to 9 p.m. (Sept. 30 to April 29), 495-544-3400, [www.vvcentre.ru](http://www.vvcentre.ru)

### **Viktor Vasnetsov House Museum:**

Teremok: This Russian-style house, where the painter lived from 1894 to 1926, was built to Vasnetsov's sketches and drawings, permanent display. Located at 13 Pereulok Vasnetsova. M. Prospekt Mira. 10 a.m. to 5 p.m., closed Mon., Tues. and the last Thursday of the month. 495-681-1329, [www.tretyakovgallery.ru/ru/museum/branch/dmvasnetsov](http://www.tretyakovgallery.ru/ru/museum/branch/dmvasnetsov)

### **Vladimir Vernadsky Geological Museum:**

Permanent displays: Planet Earth, the History of Earth, the World of Minerals, Geological Curiosities and other displays. Located at 11 Mokhovaya Ul., Bldg. 2. M. Okhotny Ryad. Ticket office open Tues. to Fri. 11 a.m. to 6 p.m., Sat. and Sun. noon to 6 p.m., closed Mon.

495-692-0943, [www.sgm.ru](http://www.sgm.ru)

### **Vsevolod Meyerhold Apartment Museum:**

Permanent display: a small museum devoted to the director who, until his arrest and murder in prison in 1940, was one of the world leaders of the avant-garde. Located at 12 Bryusov Pereulok, Apt. 11. M. Pushkinskaya. Ticket office open noon to 5:30 p.m., closed Mon., Tues. and the last Friday of the month. 495-629-9437, [www.bakhrushin.theatre.ru/branches/mkm](http://www.bakhrushin.theatre.ru/branches/mkm)

### **Watercolor and Fine Arts Academy:**

Museum of Watercolors: permanent display. Located at 15 Ul. Akademika Vargi. M. Tyoply Stan, bus 144, 227, 281 to Ulitsa Akademika Vinogradova. 11 a.m. to 7 p.m., closed Mon. and Tues. 495-531-5555, ext. 298, [www.academy.andriaka.ru](http://www.academy.andriaka.ru)

### **Winzavod Center of Contemporary Art:**

The Pioneers of Sound (Pionery Zvuka): exhibit of early electronic music instruments, to Sun. in Tsekh Krasnogo. Located at 14th Syromyatnichesky Pereulok, Bldg. 6. M. Chkalovskaya, Kurskaya. Noon to 8 p.m. 495-917-1799, [www.winzavod.ru](http://www.winzavod.ru)

### **Yekaterina Cultural Foundation:**

Mikhail Alshibai's Art Collection, to Feb. 15. Located at 21 Kuznetsky Most, entrance No. 8 from Ul. Bolshaya Lubyanka. M. Kuznetsky Most. Ticket office open 11 a.m. to 7:30 p.m., closed Mon. 495-621-5522, [www.ekaterina-fondation.ru](http://www.ekaterina-fondation.ru)

### **Zoological Museum of Moscow University:**

Permanent displays: All groups of animals, from single-celled to birds and mammals, mostly moulages. Located at 6 Bolshaya Nikitskaya Ul. M. Okhotny Ryad. 10 a.m. to 5 p.m., closed Mon. and the last Tues. of the month. 495-629-4435, [zmmu.msu.ru](http://zmmu.msu.ru)

### **Zurab Tsereteli Arts Gallery:**

<sup>NEW</sup> The Ship. A Journey Through Time and Image (Korabl. Puteshestviye Skvoz Vremya i Obraz): paintings, graphics, sculptures, photographs and objects from museum and private collections, Fri. to March 30. Located at 19 Prechistenka. M. Kropotkinskaya. Noon to 8 p.m., Sun. noon to 7 p.m., closed Mon. 495-637-2569/4771, [www.tsereteli.ru](http://www.tsereteli.ru), [www.rah.ru](http://www.rah.ru)

Original url: <https://www.themoscowtimes.com/2015/01/28/exhibits-43324-a43324>