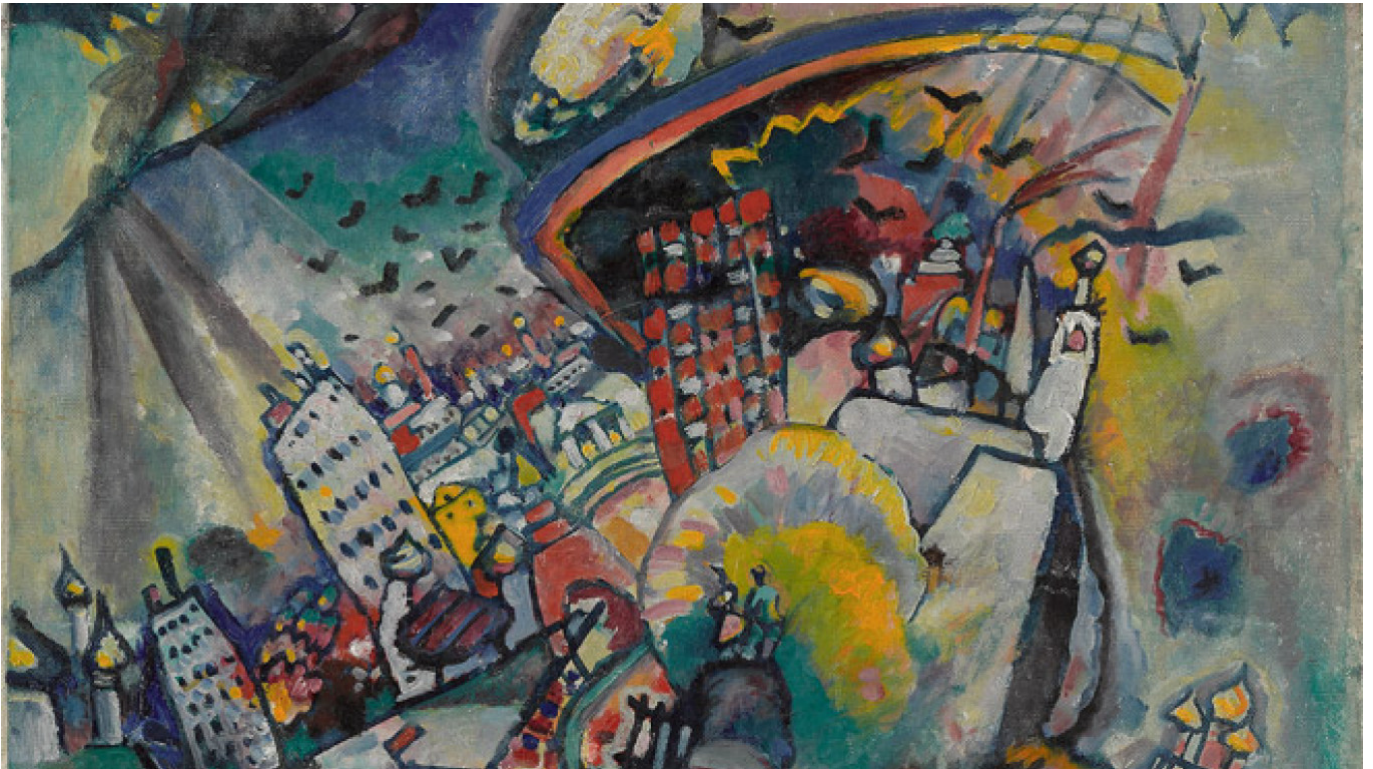


## Exhibits

By [The Moscow Times](#)

November 05, 2014



The State Tretyakov Gallery celebrates the 100th anniversary of George Kostakis, a collector who saved avant-garde art when it was shunned by the state, starting Tuesday. Above, Wassily Kandinsky's "Red Square" from 1916.

### **20th-Century Literature Museum:**

Rarities From Anna Akhmatova's Collection, to Nov. 28. Located at 17 Trubnikovsky Pereulok. M. Barrikadnaya. Ticket office open 11 a.m. to 5:30 p.m., Thurs. 1 to 7:30 p.m., closed Mon. and the last day of the month. 495-695-4618, [www.goslitmuz.ru/ru/ostroukhov-museum](http://www.goslitmuz.ru/ru/ostroukhov-museum)

### **Academy of Arts:**

Dmitry Sandzhiyev: jubilee exhibit of paintings and graphics, to Nov. 16. Located at 21 Prechistenka. M. Kropotkinskaya. Noon to 8 p.m., Sun. noon to 7 p.m., closed Mon. 495-637-4771, [www.rah.ru](http://www.rah.ru)

### **Alexander Fersman Mineralogical Museum:**

MT PICK Permanent display: a collection of minerals from all over the world. Located at 18 Leninsky Prospekt, Bldg. 2. M. Oktyabrskaya, Leninsky Prospekt, then any bus to Bolnitsa Svyatitelya Alexia. 11 a.m. to 4 p.m., closed Mon. and Tues. 495-954-3900, [www.fmm.ru](http://www.fmm.ru)

### **Alexander Goldenweiser Apartment Museum:**

Memorial Apartment of this distinguished Russian pianist and composer, permanent display. Located at 17 Tverskaya Ul., apt. 110. M. Tverskaya. Open Wed. noon to 4 p.m. Excursions by appointment. 495-629-2929, [www.glinka.museum/about/apartment\\_museum\\_goldenweiser/](http://www.glinka.museum/about/apartment_museum_goldenweiser/)

### **Alexander Herzen House Museum:**

Small Mansion where the Russian civic philosopher Alexander Herzen (1812-70), best known for his autobiographical book "My Past and Thoughts" and social novel "Who Is to Blame?" lived before leaving Russia. Located at 27 Sivtsev Vrazhek. M. Kropotkinskaya, Smolenskaya. Ticket office open 11 a.m. to 5:30 p.m., Thurs. 2 to 7:30 p.m., closed Mon. and the last day of the month. 499-241-5859, [www.goslitmuz.ru/ru/herzen-museum](http://www.goslitmuz.ru/ru/herzen-museum)

### **Alexander Ostrovsky House Museum:**

Permanent display, about the life and work of this 19th-century Russian playwright who almost single-handedly created a Russian national repertoire. Located at 9 Malaya Ordynka, Bldg. 1. M. Polyanka, Tretyakovskaya. Ticket office open noon to 6:30 p.m., Thurs. 1 to 8:30 p.m., closed Mon., Tues. and the last Fri. of the month. 495-953-8684, [www.bakhrushin.theatre.ru/branches/dmo](http://www.bakhrushin.theatre.ru/branches/dmo)

### **Alexander Pushkin Apartment Museum and Exhibition Hall:**

Pushkin and Moscow: permanent display. Located at 55/32 Arbat, entrance from Denezhny Pereulok. M. Smolenskaya. Ticket office open 10 a.m. to 5:30 p.m., Thurs. noon to 8:30 p.m., closed Mon., Tues. and the last Friday of the month. 499-241-9295, [www.pushkinmuseum.ru](http://www.pushkinmuseum.ru)

### **Alexander Pushkin Museum:**

Mikhail Lermontov (1814-41): large-scale show dedicated to this Russian poet, novelist and artist, to Dec. 10.

Open Storage of rare books, paintings, graphics, porcelain, bronzes, ceramics, genealogical materials and private collections.

Pushkin and His Age (Pushkin i Yego Epokha): permanent display.

Pushkin's Tales (Skazki Pushkina): permanent display. Located at 12/2 Ul. Prechistenka. M. Kropotkinskaya. Ticket office open 10 a.m. to 5:30 p.m., Thurs. noon to 8:30 p.m., closed Mon. and the last Fri. of the month. 495-637-5674, [www.pushkinmuseum.ru](http://www.pushkinmuseum.ru)

### **Alexander Scriabin Memorial Museum:**

Permanent display: the house furnished just as it was when the composer lived here from 1912

to 1915, including the library, paintings and pianos. Located at 11 Bolshoi Nikolopeskovsky Pereulok. M. Smolenskaya, Arbatskaya. Wed., Fri., Sat. and Sun. 11 a.m. to 6 p.m., Thurs. 1 to 9 p.m., closed Mon., Tues. and the last Friday of the month. 499-241-1901, [www.anscriabin.ru](http://www.anscriabin.ru)

#### **Anatoly Lunacharsky Memorial Study:**

Permanent display: an exhibit devoted to Anatoly Lunacharsky (1875-1933) — Russian writer, translator, essayist, art critic, politician and the first Soviet Commissar of Enlightenment responsible for culture and education. Located at 9/5 Denezhny Pereulok, Apt. 1. M. Smolenskaya. By appointment 499-241-8873, [www.goslitmuz.ru/ru/lunacharsky-museum](http://www.goslitmuz.ru/ru/lunacharsky-museum)

#### **Andrei Bely Apartment Museum:**

Permanent display: personal belongings, portraits and rare archive materials of this acclaimed Silver Age poet and novelist. Located at 55 Arbat. M. Smolenskaya. Ticket office open 10 a.m. to 5:30 p.m., Thurs. noon to 8:30 p.m., closed Mon., Tues. and the last Friday of the month. 499-241-9295, [www.pushkinmuseum.ru](http://www.pushkinmuseum.ru), [kvartira-belogo.guru.ru](http://kvartira-belogo.guru.ru)

#### **Andrei Rublev Museum of Early Russian Culture and Art:**

Permanent display: icons, wall paintings, decorative art, manuscripts and black-letter books in the restored buildings of the former Spaso-Andronikov Monastery. Located at 10 Andronyevskaya Ploshchad. M. Rinskaya, Ploshchad Iliche. Ticket office open 11 a.m. to 5:15 p.m., closed Wed. and the last Friday of the month. 495-678-1467, [www.rublev-museum.ru](http://www.rublev-museum.ru)

#### **Andrei Sakharov Museum and Public Center:**

Permanent display devoted to the legacy of this human rights activist and physicist chronicles the political repression of Soviet citizens from 1917 to the 1980s with photographs and documentary materials. Located at 57 Zemlyanoi Val, Bldg. 6. M. Kurskaya. Ticket office open 11 a.m. to 7 p.m., closed Mon. 495-623-4401/4420, [www.sakharov-center.ru](http://www.sakharov-center.ru)

#### **Andriyaka's Watercolor School:**

Masterpieces of Museum Collections: watercolors and gravures from the Kostroma Historical and Art Museum, to Dec. 14. Located at 17/1 Gorokhovskiy Pereulok. M. Kurskaya. 11 a.m. to 7 p.m., closed Mon. and Tues. 499-267-5435, [www.andriaka.ru](http://www.andriaka.ru)

#### **Anna Golubkina Studio Museum:**

Collection of Sculptures by this prominent master of the Silver Age art culture, a student of Rodin, permanent display. Located at 12 Bolshoi Lyovshinsky Pereulok. M. Park Kultury, Smolenskaya. Wed., Thurs. and Fri. noon to 6 p.m., Sat. and Sun. 10 a.m. to 4 p.m., closed Mon. and the last Friday of the month. 495-637-2564/5682, [www.tretyakovgallery.ru/ru/museum/branch/museum\\_studio\\_golubkina](http://www.tretyakovgallery.ru/ru/museum/branch/museum_studio_golubkina)

#### **Anton Chekhov House Museum:**

Permanent display: the writer's Moscow apartment, with a small display of photos and manuscripts. Located at 6 Sadovaya-Kudrinskaya Ul. M. Barrikadnaya. Tues., Thurs., Sat.

11 a.m. to 6 p.m., Wed., Fri. 2 to 8 p.m., closed Mon. and the last day of the month.  
495-691-6154/3837, [www.goslitmuz.ru/ru/chekhov-museum](http://www.goslitmuz.ru/ru/chekhov-museum)

### **Anton Chekhov Memorial Museum at Melikhovo:**

Permanent display: the house furnished more or less as it was when the writer lived there from 1892 to 1899 and wrote the famous play "The Seagull." Located in Melikhovo, from Kursky Station to Chekhov, then bus 25. 10 a.m. to 5 p.m., closed Mon. and the last Friday of the month. 499-270-7991, [www.chekhov-melikhovo.com](http://www.chekhov-melikhovo.com)

### **Arkhangelskoye Estate Museum:**

18th-Century Palace and Park Ensemble (Dvortsovo-Parkovy Ansambl 18 Veka) features works from the collection of Count Yusupov, permanent display. Located at Posyolok Arkhangelskoye, 5th kilometer of Ilyinskoye Shosse. M. Tushinskaya, then bus 549 to Arkhangelskoye or bus 151 to Sanatory. Park open 10 a.m. to 6 p.m. Exhibitions open 10 a.m. to 5 p.m., Sat., Sun. and holidays 10 a.m. to 6 p.m., closed Mon., Tues. and the last Wed. of the month. 495-797-5409, [www.arhangelskoe.ru](http://www.arhangelskoe.ru)

### **Art4.ru:**

Contemporary Russian Art collected by Igor Markin and housed in a private museum. Located at 4 Khlynovsky Tupik. M. Tverskaya. By appointment 499-136-5656, [art4.ru](http://art4.ru)

### **ArtPlay Design Center:**

Parallels: works by Tatyana Nazarenko and her students, to Nov. 30. Located at 10 Nizhnyaya Syromyatnicheskaya Ul., Bldg. 7. M Kurskaya. Noon to 8 p.m. 8-926-619-2889, 495-620-0882, [www.artplay.ru](http://www.artplay.ru)

### **ArtStory Gallery:**

MT PICK Half a Century of Russian Kinetic Art: the first exhibit of this new gallery features works by the Dvizheniye Art Group founded in 1964, to Nov. 15. Located at 14 Staropimenovsky Pereulok. M. Tverskaya, Mayakovskaya. Noon to 8 p.m., closed Mon. 495-650-1343, [www.art-story.com](http://www.art-story.com)

### **Bakhrushin Theater Museum:**

Golden Age of Russian Theater (Zolotoi Vek Russkogo Teatra): posters, photos, costumes and other memorabilia of famous Russian actors and directors of the last two centuries, permanent display.

Photographing Shakespeare: 150 Years of Theatrical Photography: artistic photography of Shakespeare's plays since the 19th century, from the Victoria and Albert Museum and from the Globe Theatre, to Jan. 15.

The Half: Actors Through Simon Annand's Lens: Annand's photographs of actors taken half an hour before their shows allow a rare glimpse into the secret world of dressing rooms and actors' rites and traditions. Exhibit from the Victoria and Albert Museum, to Jan. 15.

Theater Artist David Borovsky in photographs by Alexander Sternin and Yury Rost, to Dec. 20. Located at 31/12 Ul. Bakhrushina. M. Paveletskaya. Ticket office open noon to 6:30 p.m., Thurs. 1 to 8:30 p.m., closed Mon., Tues. and the last Fri. of the month 495-953-4470/4848, [www.gctm.ru/museum](http://www.gctm.ru/museum)

### **Belyayevo Gallery:**

Moscow Ceramics: contemporary sculptures, ceramics and art objects by Moscow artists, through Thursday. Located at 100 Profsoyuznaya Ul. M. Belyayevo. 11 a.m. to 9 p.m., closed Mon. 499-793-4121, 495-335-8322, [www.gallery-belyaev.ru](http://www.gallery-belyaev.ru)

### **Bogoroditse-Smolensky Novodevichy Convent:**

Novodevichy Convent and Cemetery: A beautiful 17th-century complex that was founded in 1524 by Tsar Vasily III, then, after the Time of Troubles, was significantly rebuilt and enhanced by the Regent Sofia, who was later confined here by Peter the Great with his unwanted first wife. Now belongs to the Moscow Eparchy of the Russian Orthodox Church. Located at 1 Novodevichy Proyezd. M. Sportivnaya. 499-245-3168, [www.mepar.ru/eparhy/temples/?temple=1166](http://www.mepar.ru/eparhy/temples/?temple=1166)

### **Boris Pasternak Museum:**

Permanent Display: The famous dacha home where the author of "Dr. Zhivago" weathered attacks after being awarded the 1958 Nobel Prize for Literature. Located in Peredelkino, 3 Ul. Pavlenko. From Kievsky Station to Peredelkino. Ticket office open 11 a.m. to 5:30 p.m., Thurs. 1 to 7:30 p.m., closed Mon. and the last day of the month. 495-934-5175, [www.pasternakmuseum.ru/index\\_angl.html](http://www.pasternakmuseum.ru/index_angl.html)

### **Brothers Lumiere Center of Photography:**

Elvis. The Birth of the Legend (Elvis. Rozhdeniye Legendy): Alfred Wertheimer's photographs of Elvis Presley from 1956, to Dec. 14.

Harold Feinstein: 120 print retrospective includes all aspects of Feinstein's black-and-white photography from the 1940s through the 1990s, to Sun.

Photographs by Lawrence Schiller, to Nov. 23. Located at 3 Bolotnaya Naberezhnaya, Bldg. 1. M. Kropotkinskaya. Noon to 9 p.m., Sat. and Sun. 11 a.m. to 9 p.m., closed Mon. 495-228-9878, [www.lumiere.ru](http://www.lumiere.ru)

### **Bulgakov House:**

Odd Flat: The communal apartment, in which Mikhail Bulgakov lived in 1921 to 1924, and which became the prototype of the "Odd Flat" where Woland took up residence with his court. Permanent displays, performances, exhibits and excursions devoted to the life and work of Mikhail Bulgakov and his novel "The Master and Margarita." Located at 10 Bolshaya Sadovaya Ul. through the arch, Apt. 50. M. Mayakovskaya. 1 to 11 p.m., Fri. and Sat. 1 p.m. to 1 a.m. Free admission. 495-970-01619, [www.dombulgakova.ru](http://www.dombulgakova.ru)

### **CCC Garage:**

Performance in Russia: an exploration of Russian performance from the early experiments of the Futurists to the radical actions of today, to Dec. 5. Located at 9 Krymsky Val, in Gorky Park, near Pionersky Prud. M. Oktyabrskaya. Noon to 8:30 p.m. 645-0520, [garageccc.com](http://garageccc.com)

### **Central House of Artists:**

Russian Geographic Society Festival: an informational and professional fair (see detailed information at [www.rgo.ru/en](http://www.rgo.ru/en)), through Thursday.

NEW The Art of Seychelles: contemporary paintings, graphics and sculptures, to Sun. Located at 10 Krymsky Val. M. Park Kultury, Oktyabrskaya. Ticket office open 11 a.m. to 7 p.m., closed Mon. 499-238-9634/9843, [www.cha.ru](http://www.cha.ru)

### **Christ the Savior Cathedral Museum:**

History of the Christ the Savior Cathedral: permanent display. Located at 15 Ul. Volkhonka. M. Kropotkinskaya. 10 a.m. to 6 p.m., closed the last Monday of the month. 495-637-1276, 495-924-8058/8490, [www.xxc.ru/complex/museum/index.htm](http://www.xxc.ru/complex/museum/index.htm), [www.xxc.ru/english/index.htm](http://www.xxc.ru/english/index.htm)

### **Classical Photography Gallery:**

Classics of World Photography (Klassiki Mirovoi Fotografii), to Nov. 23. Located at 23 Savvinskaya Naberezhnaya, Bldg. 1. Wed. to Sun. noon to 9 p.m., closed Mon. and Tues. 495-510-7713/14, [classic-gallery.ru](http://classic-gallery.ru)

### **Darwin Museum:**

Pass the Path of Evolution: a new interactive multimedia exhibition, permanent display.

Permanent displays: Macroevolution, Microevolution, Zoogeography, The Diversity of Life on Earth, Live Exhibition and others.

The Kingdom of Plants (Tsarstvo Rasteniy): Darwin Museum shows its botanic collection, to Dec. 14.

Theodore Roosevelt — the Hunter and the President: rare photographs, to Dec. 7. Located at 57 Ul. Vavilova. M. Akademicheskaya. Ticket office open 10 a.m. to 6 p.m., Thurs. 1 to 9 p.m. closed Mon. and the last Fri. of the month. 499-134-6124, 783-2253, [www.darwin.museum.ru/eng](http://www.darwin.museum.ru/eng)

### **Dayev 33 Arts Gallery:**

1900-1910s. Russian Paintings and Graphics from private collections, to Dec. 13. Located at 33 Dayev Pereulok. M. Sukharevskaya, Turgenevskaya. Noon to 7 p.m., Sat. noon to 6 p.m., closed Sun. Free admission. 495-608-7775, [www.daev-33.ru](http://www.daev-33.ru)

### **Dom Ikony Na Spiridonovke:**

Icons and other works of Christian art from a private collection, permanent display. Located at 4 Ul. Spiridonovka. M. Arbatskaya, Tverskaya. Noon to 10 p.m. 495-690-5474,

### **English Courtyard Museum:**

Russian-English Trade Relations (Russko-Angliiskiy Torgoviy Otnosheniya): This building, the cultural and commercial center of the English community in Moscow in the 16th and 17th centuries, reflects the development of Russian-English relations through the centuries, permanent display. Located at 4A Ul Varvarka. M. Kitai-Gorod. Ticket office open 10 a.m. to 5:30 p.m., Thurs. 1 to 8:30 p.m., closed Mon. and the last Friday of the month. 495-698-3952, [www.mosmuseum.ru/museum-menu-english-dvor.html](http://www.mosmuseum.ru/museum-menu-english-dvor.html)

### **Fine Art:**

NEW My Favorite Artist (Lyubimy Khudozhnik): paintings by Pavel Polyansky, to Dec. 5. Located at 3 Bolshaya Sadovaya Ul., Bldg. 10, in the yard of the Pekin restaurant. M. Mayakovskaya. 11 a.m. to 6 p.m., Sat. noon to 6 p.m., closed Sun. 499-251-7649, [www.galleryfineart.ru](http://www.galleryfineart.ru)

### **Fyodor Chaliapin House Museum:**

Permanent display: a small exhibit devoted to the great Russian bass. Located at 25 Novinsky Bulvar. M. Barrikadnaya. Ticket office open Tues. and Sat. 10 a.m. to 5 p.m., Wed. and Thurs. 11:30 a.m. to 6 p.m., Sun. 10 a.m. to 3:30 p.m., closed Mon., Fri. and the last day of the month. 495-605-6236, 252-2530, [www.shalyapin-museum.org](http://www.shalyapin-museum.org)

### **Fyodor Dostoevsky Apartment Museum:**

Permanent display: a small exhibit devoted to the author of "Crime and Punishment" and "The Brothers Karamazov" in the house where he was born. Located at 2 Ul. Dostoyevskogo. M. Novoslobodskaya. Ticket office open 11 a.m. to 5:30 p.m., Wed. and Thurs. 1 to 7:30 p.m., closed Mon. and the last day of the month. 495-681-1085, [www.goslitmuz.ru/ru/dostoyevsky-museum](http://www.goslitmuz.ru/ru/dostoyevsky-museum)

### **Gogol House:**

Memorial Museum and Scholarly Library in this Moscow estate house where Nikolai Gogol spent his four last years. Located at 7A Nikitsky Bulvar. M. Arbatskaya. Mon., Wed., Fri. noon to 7 p.m., Thurs. 2 to 9 p.m., Sat. and Sun. noon to 5 p.m., closed Tues. and the last day of the month. 495-9256, [www.domgogolya.ru](http://www.domgogolya.ru)

### **Historical Museum:**

The Bronze Age (Epokha Bronzy): permanent display.

The History of Russia From Ancient Times to the Early 20th Century (Istoriya Rossii s Drevneishikh Vremyon do Nachala 20 Veka): permanent display.

The Patriotic War of 1812 (Otechestvennaya Voina 1812 Goda): an addition to the permanent display.

World War I. The Last Battle of the Russian Empire (Pervaya Mirovaya. Poslednyaya Bitva Rossiiskoi Imperii): large-scale historical show, to Feb. 8.

**Historical Museum affiliate:**

The Romanov Chambers in Zaryadye: authentic interiors of a 17th-century Russia boyar home, permanent display. Located at 1/2 Red Square. M. Ploshchad Revolyutsii. Ticket office open 10 a.m. to 5:30 p.m., Thurs. 11 a.m. to 8 p.m., closed Tues. 495-692-4019, [www.shm.ru](http://www.shm.ru)

**Institute of Russian Realist Art:**

Permanent display of Russian and Soviet realist art. Located at 7 Derbenyovskaya Naberezhnaya, Bldg. 31. M. Paveletskaya, Proletarskaya, tram 3 to Novospassky Dvor, entrance from Derbenyovskaya Ulitsa. Tues. to Sun. 11 a.m. to 8 p.m., closed Mon., ticket office open 11 a.m. to 7 p.m. 495-276-1212, [rusrealart.ru](http://rusrealart.ru)

**International Roerich Center:**

Nikolai Roerich Museum: a collection of works by the great painter and philosopher known best for his landscapes of India, permanent display. Located at 3/5 Maly Znamensky Pereulok. M. Kropotkinskaya. Ticket office open 11 a.m. to 6 p.m., closed Mon. 499-271-3417/20, [www.icr.su](http://www.icr.su)

**Ivan Turgenev Museum:**

Moscow. Ostozhenka. Turgenev: permanent display about the life and work of this beloved novelist, playwright and poet. 37 Ul. Ostozhenka. M. Park Kultury. Ticket office open 10 a.m. to 5:30 p.m., Thurs. noon to 8:30 p.m., closed Mon., Tues. and the last Friday of the month. 495-695-1078, [www.pushkinmuseum.ru](http://www.pushkinmuseum.ru)

**Jewish Museum & Tolerance Center:**

MT PICK Contemporary Chinese Art From the DSL Collection: paintings, sculptures, video art, photographs and installations, to Jan. 11.

History of the Jews: This multimedia interactive exposition focuses on key historical periods and begins at the Beginning Theater with a 4D film based on the Torah, permanent display. Located at 11 Ul. Obraztsova, Bldg. 1A. M. Savyolovskaya, then two stops by bus 12 to Ulitsa Obraztsova. Sun. to Thurs. noon to 10 p.m., Fri. 10 a.m. to 3 p.m. closed Sat. and Jewish holidays. 495-645-0550, [www.jewish-museum.ru](http://www.jewish-museum.ru)

**Kolomenskoye Estate Museum:**

Apostles of the Book (Apostoly Knigi): exhibit of unique early Russian books, including a rare copy of the first printed book known as "The Apostle," to Jan. 31 at Dvorets Aleksey Mikhailovicha.

Russian Tsarist Estate: built between the 15th and 17th centuries, situated on a high bank of the Moscow River and now an architectural museum.

**Stable Yard (Konyushenny Dvor):** This exhibition complex includes stables with Orlov and Russian trotters, a coach house with carriages and sledges, a smithy and a hayloft.

**Tsar's Feast at Kolomenskoye ('Tsarsky Pir v Kolomenskom):** multimedia reconstruction of feasts put on by Tsar Alexei Mikhailovich in the 17th century, permanent show at Dvorets Aleksey Mikhaïlovicha. Located at 39 Prospekt Andropova. M. Kolomenskaya, Kashirskaya. 10 a.m. to 6 p.m., closed Mon. 499-782-8917/21, [mgomz.ru/kolomenskoe](http://mgomz.ru/kolomenskoe)

### **Konstantin Stanislavsky Museum:**

Permanent display: the home that was occupied by the co-founder of the Moscow Art Theater and the creator of the famous acting system. Located at 6 Leontyevsky Pereulok. M. Tverskaya. 11 a.m. to 6 p.m., Thurs. 11 a.m. to 9 p.m., closed Mon. and Tues. 495-629-2855, [www.mxat.ru/museum](http://www.mxat.ru/museum)

### **Kornei Chukovsky House Museum:**

Permanent display: The famous dacha of Russia's most popular children's poet and an influential literary critic and essayist. Located in Peredelkino, 3 Ul. Serafimovicha. From Kievsky Station to Peredelkino. Ticket office open 11 a.m. to 5:30 p.m., Thurs. 1 to 7:30 p.m., closed Mon. and the last day of the month. 495-593-2670, [goslitmuz.ru/ru/chukovsky-museum](http://goslitmuz.ru/ru/chukovsky-museum)

### **Kovcheg Gallery:**

**NEW MT PICK** **Obscure (Neyasno):** works by Rostislav Barto, Alexander Labas, Dmitry Lion, Yury Norshtein, Natalya Nesterova, Alexei Sokolov, Pavel Nikonov, Boris Sheines and other 20th- and 21st-century Russian artists, Nov. 13 to Dec. 14. Located at 12 Ul. Nemchinova. M. Timiryazevskaya, then bus 87 or 206 to Gostinitza Molodyozhnaya. Ticket office open 11 a.m. to 8:15 p.m., closed Mon. 499-977-0044/88, [www.kovcheg-art.ru](http://www.kovcheg-art.ru)

### **Kuzminki Estate Museum:**

Museum of Russian Estate Culture (Muzei Russkoi Usadebnoi Kultury): permanent display. Located in the Kuzminki Park at 6 Topolyovaya Alleya. M. Ryazansky Prospekt, then bus 29. Ticket office open 10 a.m. to 5:30 p.m., closed Mon. and the last Fri. of the month. 495-377-9457, 376-7610, [www.kuzminky.ru](http://www.kuzminky.ru)

### **Lefortovo Museum:**

Lefortovo. Landmarks of History (Lefortovo. Vekhi Istorii): the history of this Moscow district named after a close associate of Tsar Peter the Great, Franz Lefort, whose troops were stationed nearby in the German Quarter, permanent display. Located at 23 Kryukovskaya Ul. M. Semyonovskaya, Aviamotornaya. Ticket office open 10 a.m. to 5:30 p.m., closed Mon. and the last Fri. of the month. 495-360-0147, [www.mosmuseum.ru/museum-menu-lefortovo.html](http://www.mosmuseum.ru/museum-menu-lefortovo.html)

### **Leo Tolstoy Museum:**

Permanent display: This museum dedicated to the author of "War and Peace" and "Anna

Karenina" has three branches. Located at 11 Ul. Prechistenka. M. Kropotkinskaya. 499-766-9328. Branch at 12 Pyatnitskaya Ul. M. Novokuznetskaya. 495-951-5808. Branch in Khamovniki, 21 Ul. Lva Tolstogo. M. Park Kultury. 11 a.m. to 5 p.m., closed Mon. 499-246-9444. Ticket offices open 11 a.m. to 5:30 p.m., Thurs. noon to 7:30 p.m., closed Mon. and the Last Friday of the month. [tolstoymuseum.ru](http://tolstoymuseum.ru)

#### **Leo Tolstoy Museum in Khamovniki:**

Sofia Tolstaya: exhibit dedicated to Leo Tolstoy's wife Sofia Andreyevna, to Dec. 21. Located at 21 Ul. Lva Tolstogo. M. Park Kultury. Ticket office open 11 a.m. to 5:30 p.m., Thurs. noon to 7:30 p.m., closed Mon. and the Last Friday of the month. 499-246-9444, [tolstoymuseum.ru](http://tolstoymuseum.ru)

#### **Leo Tolstoy Museum on Prechistenka:**

War Roads of the Tolstoys (Voyenniye Dorogi Tolstykh) in photographs, to Dec. 27. Located at 11 Ul. Prechistenka. M. Kropotkinskaya. Ticket office open 11 a.m. to 5:30 p.m., Thurs. noon to 7:30 p.m., closed Mon. and the Last Friday of the month. 499-766-9328. [tolstoymuseum.ru](http://tolstoymuseum.ru)

#### **Lopasnya-Zachatyevskoye Estate Museum:**

Permanent display: park with seven ponds and a main building, known first as the Goncharov House and later as the Pushkin Nest. The exhibit tells the story of ties of the estate owners the Vasilchikovs with the Pushkins, Lanskies and Goncharovs. Located in Chekhov, 10 Ul. Pushkina. M. Yuznaya, then bus 365 to Skver Imeni Chekhova. 10 a.m. to 5 p.m., closed Mon. and the last Friday of the month. 496-723-0389, [www.chekhov-melikhovo.com/index.php/en/museum-melikhovo/lopasnya](http://www.chekhov-melikhovo.com/index.php/en/museum-melikhovo/lopasnya)

#### **Lyublino Estate Museum:**

Durasov Palace: perfectly preserved early 19th-century manor that belonged to Moscow landowner Nikolai Durasov, permanent display.

Palace and Park Ensemble, built by Moscow landowner Nikolai Durasov, represents the mode of life of the 19th-century Moscow nobility, permanent display. Located at 1 Letnyaya Ul. M. Volzhskaya. 10 a.m. to 6 p.m., closed Mon. 499-722-7189, [mgomz.ru/lublino](http://mgomz.ru/lublino)

#### **Manezh Exhibition Hall:**

Big Russian Icons (Bolshaya Russkaya Ikona): Collector Felix Komarov shows 300 church icons from the turn of the 17th century to the early 20th century, to Nov. 27.

My History. The Rurik Dynasty (Moya Istoria. Ryurikovichi): multimedia historical show, to Dec. 20. Located at 1 Manezh Square. M. Okhotny Ryad, Alexandrovsky Sad. Noon to 10 p.m., closed Mon. 495-645-9277, [moscowmanege.ru/en](http://moscowmanege.ru/en)

#### **Maria Yermolova Museum:**

Permanent display: a small but elegant apartment museum dedicated to the great Maly Theater actress of the end of the 19th century.

That's Theater for You (Vot Tebe i Teatr): jubilee exhibit for Okolo, the Theater Near the Stanislavsky House, and its artistic director Yury Pogrebnychko, to Sat. Located at 11 Tverskoi Bulvar. M. Tverskaya. Noon to 7 p.m., Thurs. 1 to 9 p.m. closed Tues. and the last Fri. the month. 495-690-5416/4901, [www.bakhrushin.theatre.ru/branches/dme](http://www.bakhrushin.theatre.ru/branches/dme)

#### **Marina Tsvetayeva Museum:**

Permanent display: house museum where the poet lived from 1914 to 1922. Located at 6 Borisoglebsky Pereulok. M. Arbatskaya, Smolenskaya. Noon to 5:30 p.m., Thurs. noon to 8:30 p.m., closed Mon. and the last Friday of the month. 495-697-5369, [www.dommuseum.ru](http://www.dommuseum.ru)

#### **Mikhail Glinka Museum of Musical Culture:**

Permanent display of musical instruments. Located at 4 Ul. Fadeyeva. M. Mayakovskaya. Ticket office open 11 a.m. to 6 p.m., closed Mon. and the last day of the month. 495-739-6226, [www.glinka.museum](http://www.glinka.museum)

#### **Mikhail Prishvin House Museum:**

Summer Estate of Russian writer Mikhail Prishvin (1873-1954). Located at 2 Dunino Village. M. Molodyozhnaya, then bus 121 to Lesniye Dali, ticket office open 11 a.m. to 5:30 p.m., Thurs. 1 to 6:30 p.m., closed Mon. 499-553-8132, [www.prishvin.ru](http://www.prishvin.ru)

#### **Mikhail Shchepkin House Museum:**

Permanent display, about the life and work of this 19th-century Russian actor. Located at 47 Ul. Shchepkina, Bldg. 2. M. Prospekt Mira. Ticket office open Wed., Fri., Sat., Sun. noon to 7 p.m., Thurs. 1 to 6:30 p.m., closed Mon., Tues. and the last Fri. of the month. 495-600-6149, [bakhrushin.theatre.ru/branches/dmsch](http://bakhrushin.theatre.ru/branches/dmsch)

#### **Moscow Kremlin:**

The Diamond Fund (Almazny Fond): items from the State Fund collection, permanent display. Located at the Moscow Kremlin. Borovitsky Gate entrance. M. Borovitskaya. 10 a.m. to 5 p.m., closed Thurs. 495-699-2036, [gokhran.ru/ru/exhibition](http://gokhran.ru/ru/exhibition)

#### **Moscow Kremlin Museums:**

MT PICK Charles Rennie Mackintosh (1868-1928): works by this Art Nouveau architect, designer and water colorist from British museums, to Sun. in the Patriarchy Palace.

The Armory Chamber (Oruzheinaya Palata), the Patriarchy Palace (Patriarshiye Palaty), the Ivan the Great Belfry Kolokolnya Ivana Velikogo), the Assumption Cathedral (Uspensky Sobor), the Archangel Cathedral (Arkhangelsky Sobor) and other cathedrals, permanent display. Located at the Moscow Kremlin. Borovitsky Gate entrance. M. Borovitskaya. 10 a.m. to 5 p.m., closed Thurs. 495-695-4146, [www.kreml.ru/en](http://www.kreml.ru/en)

#### **Moscow Museum of Modern Art on Gogolevsky:**

The Art of Sculpture (Iskusstvo Skulptury): works by members of the Russian Academy

of Arts, to Nov. 30.

The Inner Degunino (Vnutrenneye Degunino): city scapes in paintings by Pavel Otdelnov, to Sun. Located at 10 Gogolevsky Bulvar. Metro Kropotkinskaya. Noon to 8 p.m., ticket office to 7:15 p.m., Thurs. 1 to 9 p.m., ticket office to 8:15 p.m., closed every third Monday of the month. 495-231-3660, [www.mmoma.ru](http://www.mmoma.ru)

### **Moscow Museum of Modern Art on Yermolayevsky:**

Yury Sobolev's Islands (Ostrova Yuriya Soboleva): retrospective of graphics and designs, to Sun. Located at 17 Yermolayevsky Pereulok. M. Mayakovskaya. Noon to 8 p.m., ticket office to 7:15 p.m., Thurs. 1 to 9 p.m., ticket office to 8:15 p.m., closed every third Monday of the month. 495-231-3660, [www.mmoma.ru](http://www.mmoma.ru)

### **Moscow Planetarium:**

Permanent shows: interactive museum with the Lunarium, Big and Small Star Halls, the Urania Museum and 4D Cinema Theater. Located at 5 Sadovaya-Kudrinskaya Ul. M. Barrikadnaya. 9 a.m. to 9 p.m., weekends and holidays 10 a.m. to 10 p.m., closed Tues. 495-221-7690, [www.planetarium-moscow.ru](http://www.planetarium-moscow.ru)

### **Multimedia Art Museum:**

Best of Elle: photographs, to Dec. 7.

Duva/Diva. Carmen: a series of photographs by Stefan Bremer and Anna Blom's documentary about "Carmen, Bird of Prey" — a co-production of DuvTeatern, Finnish National Opera and Blue Flamenco School of Dance, to Nov. 23.

Facts and Fictions (Fakty i Vymysly): contemporary photographs from the UniCredi art collection, to Sun.

Unlocked: art objects by Katya Yemelyanova, to Nov. 16.

Yury Yeryomin (1881-1948): pictorialist photographs, to Dec. 14. Located at 16 Ul. Ostozhenka. M. Kropotkinskaya. Ticket office open noon to 9 p.m., closed Mon. 495-637-1100, [www.mamm-mdf.ru/en](http://www.mamm-mdf.ru/en)

### **Museum of Applied, Decorative and Folk Art:**

MT PICK Gold of the Sarmatians (Zoloto Sarmatov): ancient jewelry and other items from the 4th century BC to the 4th century AD from the Astrakhan Museum collection, to Nov. 30.

Masterpieces of Soviet Porcelain from the 1920s to the 1970s, permanent display.

Russian Folk Art From the 18th to the 20th Century: permanent display.

Russian Lacquer Miniatures by masters of Palekh, Fedoskino, Kholui and Mstyora, permanent display.

Tuva in the Race of Time (Tuva v Bege Vremeni): historical and art exhibit, to Nov. 30.

NEW Unrivalled Wedgwood: large exhibition of masterpieces from Russian museums and from the Lady Lever Collection (Liverpool) which have never travelled abroad before, Nov. 15 to Feb. 1. Located at 3 Delegatskaya Ul. M. Tsvetnoi Bulvar. Ticket office open 11 a.m. to 5 p.m., closed Tues. and the last Mon. of the month. 495-609-0146, Thurs. 10 a.m. to 8 p.m., [www.vmdpni.ru](http://www.vmdpni.ru)

### **Museum of Jewish History in Russia:**

Permanent display: artifacts representing the history of Jews who lived under Russian rule after the three partitions of Poland. Located at 10 Petrovsko-Razumovskaya Alleya, Bldg.3. M. Dynamo. Mon. to Wed. and Fri. noon to 7 p.m., Thurs. noon to 9 p.m., Sun. noon to 5 p.m., closed Sat. Free admission. 495-656-4571, [www.mievr.ru](http://www.mievr.ru)

### **Museum of Moscow:**

Irkutsk Merchants in the Destinies of Siberia, Moscow and Russia (Irkutskiye Kuptsy v Sudbakh Sibiri, Moskvyy, Rossii): a historical exhibit, to Sun.

Moscow and London. Reflections. 1914-2014: photographs and videos, to Nov. 23.

NEW Moscow That We Lost (Moskva, Kotoruyu My Poteryali): old photographs, to Jan. 15.

The History of Moscow from old times to the present, permanent display.

The Other Capital (Drugaya Stolitsa): works by contemporary St. Petersburg artists, to Nov. 14. Located at 2 Zubovskiy Bulvar, entrance from Ostozhenka. M. Park Kultury. Ticket office open Tues., Wed., Fri. 10 a.m. to 5:30 p.m., Sat., Sun. 11 a.m. to 5:30 p.m., closed Mon. and the last Friday of the month. 499-766-4196, [www.mosmuseum.ru](http://www.mosmuseum.ru)

### **Museum of Private Collections:**

Permanent display in 23 halls includes 1,500 works of art.

Photo Portraits From the Collection of Lola Garrido, to Jan. 18. Located at 10 Ul. Volkhonka. M. Kropotkinskaya. 11 a.m. to 7 p.m., Thurs. 11 a.m. to 9 p.m., closed Mon. and Tues. 495-697-1610, [www.arts-museum.ru](http://www.arts-museum.ru), [artprivatecollections.ru](http://artprivatecollections.ru)

### **Museum of Russian Icons:**

Permanent display: East European Christian art from the 6th to the 20th century. Located at 3 Goncharnaya Naberezhnaya, entrance from Bolshoi Vatin Pereulok. M. Taganskaya. 11 a.m. to 7 p.m., closed Wed. 495-221-5283, [www.russikona.ru](http://www.russikona.ru)

### **Museum of the Contemporary History of Russia:**

From the English Club to the Museum of the Contemporary History of Russia: permanent display.

State Symbols of Russia. History and the Present Day (Gosudarstvennaya Simvolika Rossii. Istoriya i Sovremennost): permanent display. Located at 21 Tverskaya Ul., M. Tverskaya. Ticket office open Tues., Wed. and Fri. 10 a.m. to 5:30 p.m., Thurs. and Sat. 11 a.m. to 6:30 p.m.,

Sun. 10 a.m. to 4:30 p.m., closed Mon. 495-699-5458, [www.sovr.ru](http://www.sovr.ru)

### **Museum of Unique Dolls:**

Permanent display of antique dolls. Located at 13 Ul. Pokrovka. M. Turgenevskaya, Kitai-Gorod, Chistiye Prudy. Fri., Sat. Sun. 10 a.m. to 6 p.m., Tues., Wed. Thurs. excursions at noon, 2 and 6 p.m., closed Mon. Free admission. 495-625-6405/7512, [www.dollmuseum.ru](http://www.dollmuseum.ru)

### **Nashi Khudozhniki Gallery:**

MT PICK Aristarkh Lentulov: paintings from the 1910s to the early 1920s, to Dec. 21. Located at 2 Sechenovsky Pereulok. M. Molodyozhnaya. 11 a.m. to 8 p.m., closed Mon. 495-637-2810/52, [www.kournikovagallery.ru](http://www.kournikovagallery.ru)

### **Nemirovich-Danchenko Apartment Museum:**

Permanent display: the home that was occupied by the stage director, playwright and co-founder of the Moscow Art Theater. Located at 5/7 Glinishchevsky Pereulok, entrance 5, apt. 52. M. Tverskaya. 11 a.m. to 5:30 p.m., closed Mon. and Tues. 495-650-5391, [www.mxat.ru/museum](http://www.mxat.ru/museum)

### **New Tretyakov Gallery:**

20th-Century Book Covers and rare books from the gallery collection, to Jan. 11.

Alexander Rodchenko. Workers Club: (1885-1953): The reconstructed interior of a club for workers designed by this constructivist artist, permanent display.

From the Renaissance to Conceptualism: retrospective of works by Dmitry Prigov (1940-2007), to Sun.

NEW MT PICK Georgy Kostaki (1913-90): one of the best collections of Russian art, Tues. to Feb. 8.

Main exhibit halls: a display of 20th-century Russian art.

The Magic of Body (Magiya Tela): Russian paintings and sculptures from the 18th to the 20th century, to Dec. 14.

Vera Mukhina (1889-1953): works by this prominent sculptor, to Jan. 11. Located at 10 Krymsky Val. M. Oktyabrskaya, Park Kultury. Ticket office open 10 a.m. to 6:30 p.m., closed Mon. 499-230-7788, 238-1378, 495-951-1362. Excursions 495-953-5223. An Autoline minibus runs from outside the New Tretyakov Gallery to the Tretyakov Gallery at 10/12 Lavrushinsky Pereulok daily at 12:20, 1:20, 2:20, 3:20 and 4:20 p.m., [www.tretyakovgallery.ru](http://www.tretyakovgallery.ru)

### **New Western Art Gallery:**

European and American Art from the 19th and 20th centuries.

Oscar Wilde. Aubrey Beardsley. View From Russia: works by Beardsley, Konstantin Somov, Lev Bakst and other Russian Beardsley followers, Russian and British art magazines, books by Wilde, and autographs, photographs and archival materials from British and Russian

museums, to Nov. 16. Located at 14 Volkhonka. M. Kropotkinskaya. 11 a.m. to 8 p.m., Thurs. 11 a.m. to 9 p.m., closed Mon. 495-697-1546, [www.arts-museum.ru](http://www.arts-museum.ru), [www.newpaintart.ru](http://www.newpaintart.ru)

### **Nikolai Golovanov Apartment Museum:**

Memorial Apartment of this distinguished conductor who was expelled from the Bolshoi Theater three times, in 1928, 1936 and 1953, permanent display. Located at 7 Bryusov Pereulok, apt. 10. M. Tverskaya, Pushkinskaya. Open Mon. and Wed. 2 to 5 p.m. 495-629-7083, [www.glinka.museum/about/apartment\\_museum\\_golovanov](http://www.glinka.museum/about/apartment_museum_golovanov)

### **Novy Manezh:**

Jameel Prize 3: Victoria and Albert Museum (London), in partnership with Jameel Art, features works by ten artists and designers of the Jameel Prize — the winner Dice Kayek, and finalists Faig Ahmed, Nada Debs, Mounir Fatmi, Rahul Jain, Waqas Khan, Laurent Mareschal, Nasser Al Salem, Florie Salnot and Pascal Zoghbi, to Nov. 23. Located at 3 Georgiyevsky Pereulok. M. Okhotny Ryad, Teatralnaya. Noon to 9 p.m., closed Mon. 495-645-9277, [moscowmanege.ru/en](http://moscowmanege.ru/en)

### **Oriental Art Museum:**

Extra Storeroom (Osobaya Kladovaya): North Caucasian archeological findings from the 5th century BC to the 14th century AD, permanent display. Reservations required.

Permanent Displays: art of Korea, India, Iran, China, Asia, Siberia and others, permanent display.

MT PICK The Light of Shambala. Central Asia in the Life and Art of the Roerichs: this large-scale show includes paintings by Nikolai and Svyatoslav Roerich, art works, artifacts, photographs and other items from the Roerichs' collection, to Nov. 16. Located at 12 Nikitsky Bulvar. M. Arbatskaya. Ticket office open 11 a.m. to 7:30 p.m., Thurs. noon to 8:30 p.m., closed Mon. 495-691-9614/0212, [www.orientmuseum.ru](http://www.orientmuseum.ru)

### **Osnova Gallery at Winzavod Center of Contemporary Art:**

Samuel Salcedo: works by this contemporary Spanish sculptor and painter, to Nov. 16. Located at 14th Syromyatnichesky Pereulok, Bldg. 6, entrance 22. M. Chkalovskaya, Kurskaya. Noon to 8 p.m., closed Mon. 8-926-887-3987, [osnovagallery.ru](http://osnovagallery.ru)

### **Pechersky Gallery at Winzavod Center of Contemporary Art:**

Plastic Perfect: an ironic installation by American artist Rachel Lee Hovnanian, to Sat. Located at 14th Syromyatnichesky Pereulok, Bldg. 6. M. Chkalovskaya, Kurskaya. Noon to 8 p.m., closed Mon. 495-280-0772, [www.pecherskygallery.com](http://www.pecherskygallery.com), [www.winzavod.ru](http://www.winzavod.ru)

### **Project Fabrika:**

Spartacus. Times New Roman: big installations by Khaim Sokol, to Nov. 23. Located at 18 Perevedenovsky Pereulok. M. Baumanskaya, Elektrozavodskaya, then trolleybus 22 or 25 to Balakirevsky Pereulok. Noon to 8 p.m., closed Mon. Free admission. 499-265-3926/3935,

[www.proektfabrika.ru](http://www.proektfabrika.ru)

### **Pushkin Museum of Fine Arts:**

MT PICK British Design: From William Morris to the Digital Revolution, to Nov. 30.

Permanent collection: works from ancient Egypt, Assyria, Greece and Rome, plus works from the Middle Ages to the early 20th century.

MT PICK The Art of Ancient Cyprus from the museum collection, to Jan. 11. Located at 12 Volkhonka. M. Kropotkinskaya. 10 a.m. to 7 p.m., Thurs. to 9 p.m., closed Mon. 495-697-9578, [www.arts-museum.ru](http://www.arts-museum.ru)

### **Regina Gallery at Winzavod Center of Contemporary Art:**

My Yard (Moi Dvor): paintings by Semyon Faibisovich, to Sun. Located at 14th Syromyatnichesky Pereulok. M. Chkalovskaya, Kurskaya. 11 a.m. to 7 p.m., closed Sun. and Mon. Free admission. 495-228-1330, [www.reginagallery.com](http://www.reginagallery.com)

### **ROSIZO Exhibition Center:**

The World of Children and Beasts (Mir Detei i Zverei): sculptures and graphics from the 1960s to the 1990s from ROSIZO collection, to Sun. Located at 48 Lyublinskaya Ul. M. Tekstilshchiki, bus 623, 633, 650, 29 to Stavropolskaya Ulitsa. Tues. to Sun. 11 a.m. to 8 p.m., Sun. 11 a.m. to 6 p.m., closed Mon. 495-350-0295, [www.rosizo.ru](http://www.rosizo.ru)

### **Roza Azora Gallery:**

NEW At Ease (V Svoey Tarelke): contemporary paintings and graphics on the theme of food, Fri. to Nov. 28. Located at 14 Nikitsky Bulvar. Mon. to Sat. noon to 8 p.m., Sun. noon to 6 p.m. 495-695-8119, [www.rozaazora.ru](http://www.rozaazora.ru)

### **RuArts Gallery:**

For Comfort (Dlya Uyuta): an ironic installation of paintings and objects by Vita Buivid, to Sat.

NEW Studio 50A: photographs by Sergei Borisov, to Dec. 6. Located at 10 1st Zachatyevsky Pereulok. M. Kropotkinskaya. Noon to 8 p.m. Free admission. 495-637-4475, [www.ruarts.ru](http://www.ruarts.ru)

### **Sergei Konenkov Studio Museum:**

Permanent display: works by this influential Russian and Soviet sculptor who spent more than 20 years in the United States and returned home in 1945 at the age of 71. Located at 17 Tverskaya Ul. M. Tverskaya, Pushkinskaya. Ticket office open 11 a.m. to 6:30 p.m., closed Mon., Tues. and the last Friday of the month. 495-629-6139, [www.rah.ru/museums/muzey\\_masterskaya\\_s\\_t\\_konenkova.php](http://www.rah.ru/museums/muzey_masterskaya_s_t_konenkova.php)

### **Sergei Prokofiev Museum:**

Memorial Apartment where the composer lived from 1947 to 1953, permanent display. Located at 6 Kamergersky Pereulok. M. Teatralnaya, Okhotny Ryad. Wed. to Sun. 11 a.m. to 5

p.m., closed Mon. and Tues. 495-692-7959,  
[www.glinka.museum/about/museum\\_of\\_prokofiev](http://www.glinka.museum/about/museum_of_prokofiev)

### **Silver Age Museum:**

Bryusov House: "Valery Bryusov Memorial Study" and "Pushkin and the Silver Age of Russian Literature," permanent displays. Located at 30 Prospekt Mira. M. Prospekt Mira (circle line). Ticket office open 11 a.m. to 5:30 p.m., Thurs. and Fri. 1 to 7:30 p.m., closed Mon. and the last day of the month. 495-680-8683, [www.goslitmuz.ru/ru/bryusov-museum](http://www.goslitmuz.ru/ru/bryusov-museum)

### **St. Basil's Cathedral:**

Sacred Relics of the Pokrovsky Cathedral (Svyatyni Pokrovskogo Sobora): stunning medieval interior, icons, books and other religious relics. Located at 2 Red Square. M. Ploshchad Revolyutsii. Ticket office open in summer, 11 a.m. to 5:30 p.m., in winter 11 a.m. to 4:30 p.m., 495-698-3304 [www.saintbasil.ru](http://www.saintbasil.ru)

### **State Center of Contemporary Art:**

Contemporary Austrian Art, to Nov. 30. Located at 13 Zoologicheskaya Ul. M. Krasnopresnenskaya. Noon to 8 p.m., Thurs. noon to 9 p.m., closed Mon. 499-254-8492/0674, [www.ncca.ru](http://www.ncca.ru)

### **State Literary Museum:**

Permanent display: books, manuscripts and other items that tell the stories of Russia's great writers. Located at 28 Ul. Petrovka. M. Chekhovskaya. 11 a.m. to 6 p.m., Thurs. 2 to 8 p.m., closed Mon. 495-625-1226, [www.goslitmuz.ru/ru/gos-lit-museum](http://www.goslitmuz.ru/ru/gos-lit-museum)

### **Stella Art on Skaryatinsky:**

Split Personality (Razdvoyeniye Lichnosti): paintings by Konstantin Latyshev, to Nov. 17. Located at 7 Skaryatinsky Pereulok. M. Barrikadnaya. Noon to 7 p.m., closed Mon. 495-691-3407, [www.safmuseum.org](http://www.safmuseum.org)

### **Svyatoslav Richter Memorial Apartment:**

Permanent display: the great pianist's apartment, with a display of photos and paintings, video and sound recordings. Located at 2/6 Bolshaya Bronnaya Ul., Apt. 59. M. Pushkinskaya. By appointment Tues., Thurs. and the third Saturday of the month noon to 2 p.m. 495-695-8346, 697-7205, [www.sviatoslav-richter.ru](http://www.sviatoslav-richter.ru)

### **Tchaikovsky and Moscow Museum:**

Memorial Apartment where the composer lived from September 1872 to November 1873, permanent display. Located at 46/54 Kudrinskaya Ploshchad. M. Barrikadnaya. 10 a.m. to 7 p.m., closed Mon. and Tues. 495-691-1514, [www.glinka.museum/about/museum\\_of\\_moscow\\_tchaikovsky](http://www.glinka.museum/about/museum_of_moscow_tchaikovsky)

### **The GULAG History Museum:**

Permanent display: Documents, letters, memoirs and personal belongings of GULAG prisoners. Located at 16 Ul. Petrovka. M. Kuznetsky Most, Teatralnaya. Ticket office open 11 a.m. to 6 p.m., Thurs. noon to 7 p.m., closed Mon. and the last Friday of the week. 495-621-7310, [www.gmig.ru](http://www.gmig.ru)

### **Tretyakov Gallery:**

Main exhibit halls: masterpieces of Russian icon art and world-famous 19th- and early 20th-century paintings.

Paintings and Frames. Dialogues (Kartina i Rama. Dialogi): paintings and restored frames from the late 13th to the early 21st century from the gallery collection, to Nov. 30 in the Engineer Wing.

MT PICK The Magic of the Body (Magiya Tela): Russian drawings from the late 19th to the 20th century, to April 12. Located at 10/12 Lavrushinsky Pereulok. M. Tretyakovskaya. Ticket office open Tues., Wed., Sat. and Sun. 10 a.m. to 5 p.m., Thurs. and Fri. 10 a.m. to 8 p.m., closed Mon. 499-230-7788, 238-1378, 495-951-1362. An Autoline minibus runs from outside the Tretyakov Gallery to the New Tretyakov Gallery at 10 Krymsky Val daily at noon, 1, 2, 3, 4 and 5 p.m., [www.tretyakovgallery.ru](http://www.tretyakovgallery.ru)

### **Tsaritsyno Museum:**

Catherine the Great: (Velikaya Yekaterina): an exhibit devoted to the Russian empress, permanent display.

MT PICK Imperial Porcelain Factory (Imperatorsky Farforovy Zavod): Russian porcelain from the 18th to the 21st century from museum and private collections, to Jan. 11.

Masterpieces of the Tsaritsyno Art Collection (Shedevry Khudozhestvennogo Sobraniya Tsaritsyno): West European tapestry from the 16th to the 18th centuries, and 20th-century Russian glass and tapestry, permanent display.

The Past and Present of Tsaritsyno (Byl i Nov Tsaritsina): the history of Tsaritsyno, permanent display.

The Silver Storeroom (Serebryanaya Kladovaya): works of Russian jewelry from the 16th to the 20th century, permanent display.

Tsaritsyno Antiquities (Tsaritsynskiye Drevnosti): archaeological findings, permanent display. Located at 1 Dolskaya Ul. M. Tsaritsyno, Orekhovo. Ticket office open 11 a.m. to 5:30 p.m., Sat. 11 a.m. to 7:30 p.m., Sun. and holidays 11 a.m. to 6:30 p.m., closed Mon. Park open daily 6 a.m. to midnight. 499-725-7287, [www.tsaritsyno-museum.ru](http://www.tsaritsyno-museum.ru)

### **Udarnik:**

Kandinsky Prize: works by the 2014 Kandinsky Prize nominees, to Nov. 30. Located at 2 Ul. Serafimovicha. M. Polyanka, Kropotkinskaya. 11 a.m. to 8 p.m., closed Mon. 495-657-9758.

### **Vadim Sidur Museum:**

Vadim Sidur (1924–86): sculptures and graphics by this avant-garde artist, to March 15. Located at 37 Novogireyevskaya Ul., Bldg. 2. M. Perovo. Noon to 7 p.m., closed Mon. and Tues. 495-645-9277, [moscowmanege.ru/en](http://moscowmanege.ru/en)

#### **Vadim Zadorozhny's Vehicles Museum:**

Permanent displays: retro cars, motorcycles, weaponry and airplanes. Located at Posyolok Arkhangelskoye, 4th km of Ilyinskoye Shosse, Bldg. 8. M. Tushinskaya, bus 541, 549, 568, 151, 541, 549, 568. M. Strogino, shuttle Strogino–Zacharkovo to Lipovaya Alleya. By car Novorizhskoye Shosse, near Arkhangelskoye. Ticket office open Tues. to Fri. 10 a.m. to 6 p.m., Sat. and Sun. 10 a.m. to 7 p.m., closed Mon. 495-662-3818, [www.tnmuseum.ru](http://www.tnmuseum.ru)

#### **Vasily Pushkin House Museum:**

Small Mansion where this Russian neoclassical poet and an uncle of Alexander Pushkin lived from 1824 to 1830, permanent display. Located at 36 Staraya Basmannaya Ul. M. Krasniye Vorota. Ticket office open 10 a.m. to 5:30 p.m., Thurs. noon to 8:30 p.m., closed Mon. and the last Fri. of the month. 495-637-5674, [www.pushkinmuseum.ru](http://www.pushkinmuseum.ru)

#### **VDNKh:**

All-Russian Exhibition Center offers various trade, cultural and art shows and fairs. Located near M. VDNKh. Gates open in summer time from 9 a.m. to 11 p.m. (April 30 to Sept. 28), and in winter time from 9 a.m. to 9 p.m. (Sept. 30 to April 29), 495-544-3400, [www.vvcentre.ru](http://www.vvcentre.ru)

#### **Viktor Vasnetsov House Museum:**

Teremok: This Russian-style house, where the painter lived from 1894 to 1926, was built to Vasnetsov's sketches and drawings, permanent display. Located at 13 Pereulok Vasnetsova. M. Prospekt Mira. 10 a.m. to 5 p.m., closed Mon., Tues. and the last Thursday of the month. 495-681-1329, [www.tretyakovgallery.ru/ru/museum/branch/dmvasnetsov](http://www.tretyakovgallery.ru/ru/museum/branch/dmvasnetsov)

#### **Vladimir Vernadsky Geological Museum:**

Permanent displays: Planet Earth, the History of Earth, the World of Minerals, Geological Curiosities and other displays. Located at 11 Mokhovaya Ul., Bldg. 2. M. Okhotny Ryad. Ticket office open Tues. to Fri. 11 a.m. to 6 p.m., Sat. and Sun. noon to 6 p.m., closed Mon. 495-692-0943, [www.sgm.ru](http://www.sgm.ru)

#### **Vsevolod Meyerhold Apartment Museum:**

Permanent display: a small museum devoted to the director who, until his arrest and murder in prison in 1940, was one of the world leaders of the avant-garde. Located at 12 Bryusov Pereulok, Apt. 11. M. Pushkinskaya. Ticket office open noon to 5:30 p.m., closed Mon., Tues. and the last Friday of the month. 495-629-9437, [www.bakhrushin.theatre.ru/branches/mkm](http://www.bakhrushin.theatre.ru/branches/mkm)

#### **Watercolor and Fine Arts Academy:**

Museum of Watercolors: permanent display. Located at 15 Ul. Akademika Vargi. M. Tyoply Stan, bus 144, 227, 281 to Ulitsa Akademika Vinogradova. 11 a.m. to 7 p.m., closed Mon.

and Tues. 495-531-5555, ext. 298, [www.academy.andriaka.ru](http://www.academy.andriaka.ru)

### **Winzavod Center of Contemporary Art:**

Inner Geography. Layers of Memory (Vnutrennyaya Geografiya. Sloi Pamyati): photo works by Katya Garkushko, to Dec. 8. Located at 14th Syromyatnichesky Pereulok, Bldg. 6. M. Chkalovskaya, Kurskaya. Noon to 8 p.m. 495-917-4646, [www.winzavod.ru](http://www.winzavod.ru)

### **Yekaterina Cultural Foundation:**

Moscow Speaks (Govorit Moskva): works by young artists, to Nov. 30. Located at 21 Kuznetsky Most, entrance No. 8 from Ul. Bolshaya Lubyanka. M. Kuznetsky Most. Ticket office open 11 a.m. to 7:30 p.m., closed Mon. 495-621-5522, [www.ekaterina-fondation.ru](http://www.ekaterina-fondation.ru)

### **Zdes Gallery:**

MT PICK Works on Paper by Sergei Eisenstein, Meer Akselrod, Konstantin Istomin, Sarra Lebedeva, Yevgeny Rastorguyev and others, to Nov. 23. Located at 31/22 Taganskaya Ul. M. Marksistskaya. Any bus to Bolshaya Andronyevskaya Ulitsa. 11 a.m. to 8 p.m., closed Mon. 495-678-5578.

### **Zoological Museum of Moscow University:**

Permanent displays: All groups of animals, from single-celled to birds and mammals, mostly moulages. Located at 6 Bolshaya Nikitskaya Ul. M. Okhotny Ryad. 10 a.m. to 5 p.m., closed Mon. and the last Tues. of the month. 495-629-4435, [zmmu.msu.ru](http://zmmu.msu.ru)

### **Zurab Tsereteli Arts Gallery:**

Sergei Solovyov: videos, paintings and photographs from the collection of this film director, to Nov. 30. Located at 19 Prechistenka. M. Kropotkinskaya. Noon to 8 p.m., Sun. noon to 7 p.m., closed Mon. 495-637-2569/4771, [www.tsereteli.ru](http://www.tsereteli.ru), [www.rah.ru](http://www.rah.ru)

Original url: <https://www.themoscowtimes.com/2014/11/05/exhibits-41053-a41053>