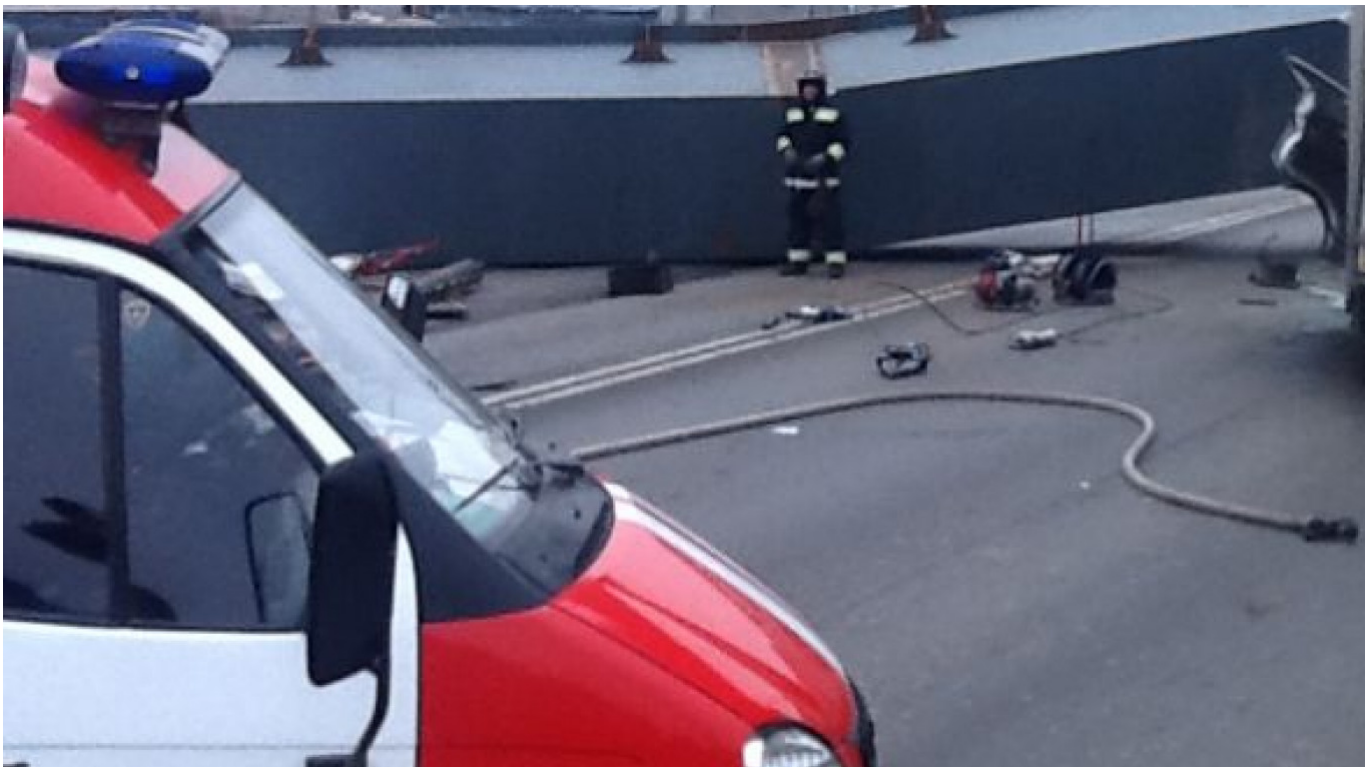


Fallen Highway Overpass Kills One in Leningrad Region

By [The Moscow Times](#)

March 03, 2014



An emergency services vehicle next to the fallen construction beam.

A collapsed construction beam on the M-10 highway connecting St. Petersburg and Moscow killed one and seriously injured another near the Leningrad region village of Yam-Izhora.

The metal beam, part of the construction for an overpass above the road, fell on the highway at around noon on Monday, landing on a passing Nissan truck and killing its driver at the scene, Interfax reported. A construction worker fell from the overpass and was transported to a nearby hospital where he is currently in critical condition.

Traffic authorities have been forced to block traffic in both directions, rerouting cars through the St. Petersburg suburbs of Kolpino and Pushkin. The normal flow of traffic was reportedly restored at 2:30 p.m.

A statement from the Investigative Committee's St. Petersburg office Monday afternoon said

the circumstances of the accident were being established.

Original url:

<https://www.themoscowtimes.com/2014/03/03/fallen-highway-overpass-kills-one-in-leningrad-region-a32622>